



Kensington Park Gardens, W11

£575 per week (£2,491.66 pcm) *Part Furnished*



A rare opportunity to rent this beautiful one bedroom flat with fantastic views and direct access out to the stunning communal gardens behind.

KEY FEATURES

- 1 Bedroom
- 1 Reception Room
- 1 Bathroom
- Communal Gardens
- Part Furnished



Notting Hill Lettings

0207 727 3227 | nottinghill@winkworth.co.uk

Winkworth

for every step...



A rare opportunity to rent this beautiful one bedroom flat with fantastic views and direct access out to the stunning communal gardens behind. Property comprises: Classical reception room with wonderful high ceilings and original cornicing, fully fitted open plan kitchen, double bedroom and shower room. The property has been refurbished throughout and is available furnished, part furnished or unfurnished. Hot water included in rent. Single occupants only please.

Kensington Park Gardens is a highly sought after, imposing, residential street running from Kensington Park Road to Ladbrooke Grove, perfectly positioned a short walk from and between the boutiques, bars and restaurants of Westbourne Grove and the transport connections of Notting Hill Gate.

Utilities:

Electricity – Mains

Water – Mains

Sewerage – Mains

Heating – Gas

Broadband <https://checker.ofcom.org.uk/en-gb/broadband-coverage>

Mobile Coverage <https://checker.ofcom.org.uk/en-gb/mobile-coverage>

MATERIAL INFO

Deposit: £2,875

Holding Deposit: £575

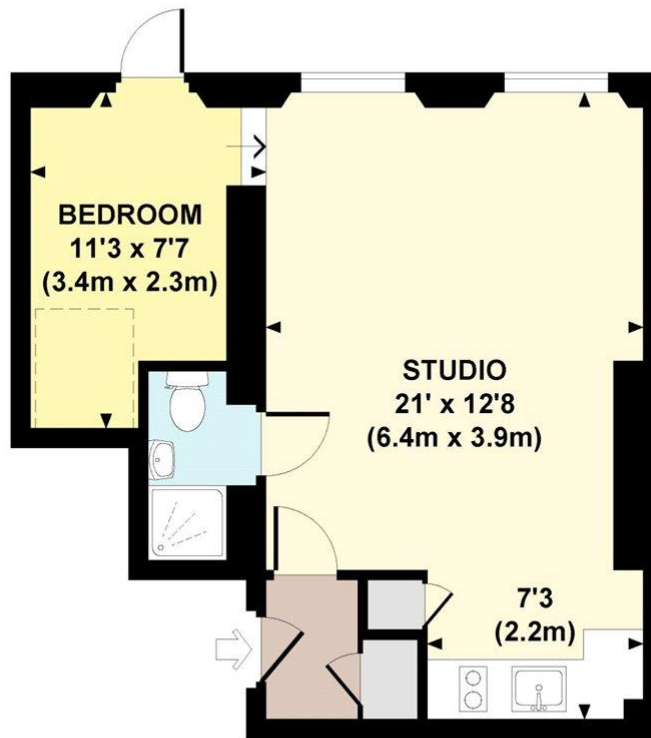
Council Tax Band: E (RBKC)





KENSINGTON PARK GARDENS, W11

Approx. gross internal area
373 Sq Ft. / 35 Sq M.

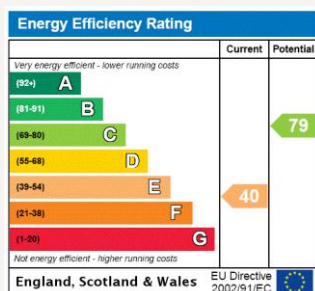


GROUND FLOOR

did dowlings jones
for design

Every attempt has been made to ensure the accuracy of this floor plan however measurements are approximate and for illustration purposes only. Not to scale. Photographs, floor plans & brochures
© 2011 Dowlings Jones Design Ltd. www.dowlingsjonesdesign.com 020 718 0953 / 01753 874 288

For more information, scan the QR code or visit the link below



<https://www.winkworth.co.uk/rent/property/NHL180009>

Where no figures are shown, we have been unable to ascertain the information. All figures that are shown were correct at the time of printing.

Notting Hill Lettings

0207 727 3227 | nottinghill@winkworth.co.uk

Winkworth

for every step...

Winkworth wishes to inform prospective buyers and tenants that these particulars are a guide and act as information only. All our details are given in good faith and believed to be correct at the time of printing but they don't form part of an offer or contract. No Winkworth employee has authority to make or give any representation or warranty in relation to this property. All fixtures and fittings, whether fitted or not are deemed removable by the vendor unless stated otherwise and room sizes are measured between internal wall surfaces, including furnishings.