



Da Vinci House, 1 Nightingale Way, Reading, RG30 1EZ

£1,795 per month *Furnished*



Modern fourth floor two bedroom apartment located within the Renaissance development just off of Portman Road and within easy reach of Reading town centre. The property comprises open plan living room/kitchen with integrated appliances, two double bedrooms, en suite shower room to the master bedroom and a further three piece bathroom. Further benefits include balcony, secure undercroft parking space, lift access and use of the communal podium located on the first floor. Available 4th March 2026. Furnished.

KEY FEATURES

- Modern two bedroom apartment
- Fourth floor with lift access
- Two bathrooms
- Balcony
- Secure allocated parking space
- Available 4th March
- Furnished

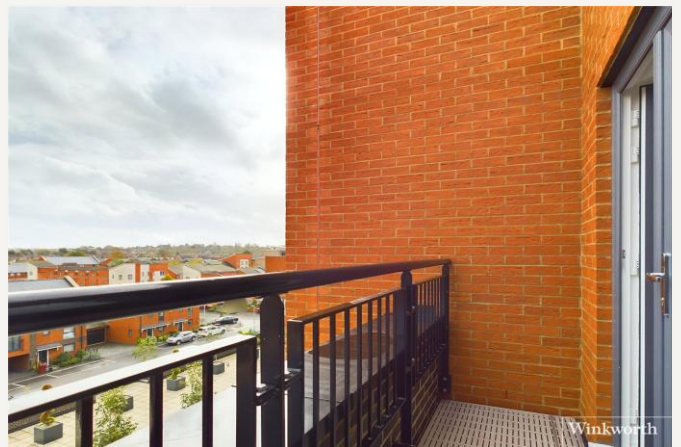


Reading

0118 4022 300 | reading@winkworth.co.uk

Winkworth

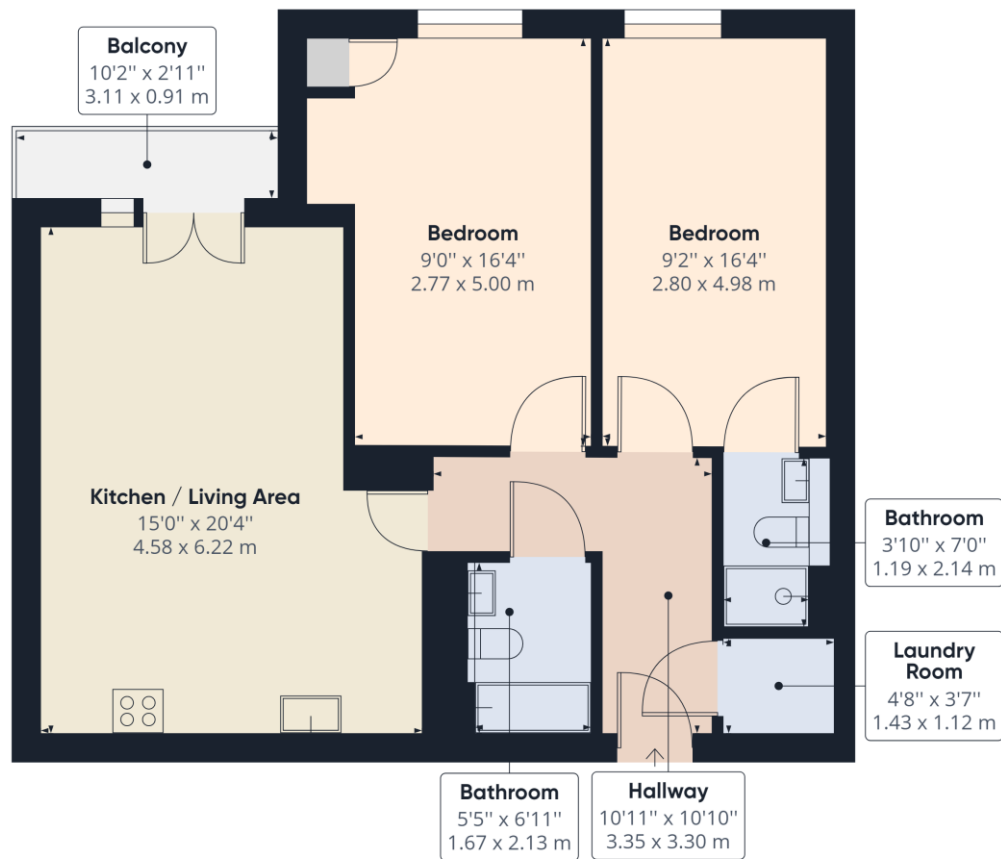
for every step...





MATERIAL INFO

Deposit: £2,071.15
Holding Deposit: £414.23
Council Tax Band: C
EPC rating: B

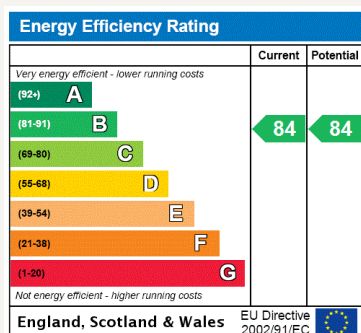


Approximate total area⁽¹⁾
770.66 ft²
71.60 m²

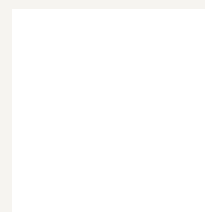
(1) Excluding balconies and terraces

While every attempt has been made to ensure accuracy, all measurements are approximate, not to scale. This floor plan is for illustrative purposes only.

GIRAFFE 360



For more information, scan the QR code or visit the link below



<https://www.winkworth.co.uk/rent/property/REA220147>

Where no figures are shown, we have been unable to ascertain the information. All figures that are shown were correct at the time of printing.

Reading

0118 4022 300 | reading@winkworth.co.uk

Winkworth

for every step...

Winkworth wishes to inform prospective buyers and tenants that these particulars are a guide and act as information only. All our details are given in good faith and believed to be correct at the time of printing but they don't form part of an offer or contract. No Winkworth employee has authority to make or give any representation or warranty in relation to this property. All fixtures and fittings, whether fitted or not are deemed removable by the vendor unless stated otherwise and room sizes are measured between internal wall surfaces, including furnishings.