



WESTBOURNE TERRACE, W2  
£1,650,000 LEASEHOLD

Winkworth



## WESTBOURNE TERRACE, W2

Located in W2 - Hyde Park, a beautifully presented, three bedroom, two bathrooms, raised ground floor apartment, with high ceilings (about 3.6 m or 12'), intricate plasterwork, and oak parquet flooring. Set in a stucco fronted Grade II Victorian former townhouse, moments from Hyde Park and Kensington Gardens.

Westbourne Terrace provides a peaceful, tree-lined setting in the heart of London, just a stone's throw from Hyde Park and ideally positioned for access to the Elizabeth Line, Heathrow Express, Central Line, and the vibrant shops and restaurants of Westbourne Grove.

The property also benefits from private parking within the carriage driveway.

LEASE: ABOUT 162 YEARS REMAINING

SERVICE CHARGE - ABOUT £8,300 PER ANNUM

GROUND RENT - TBC

COUNCIL TAX BAND: G



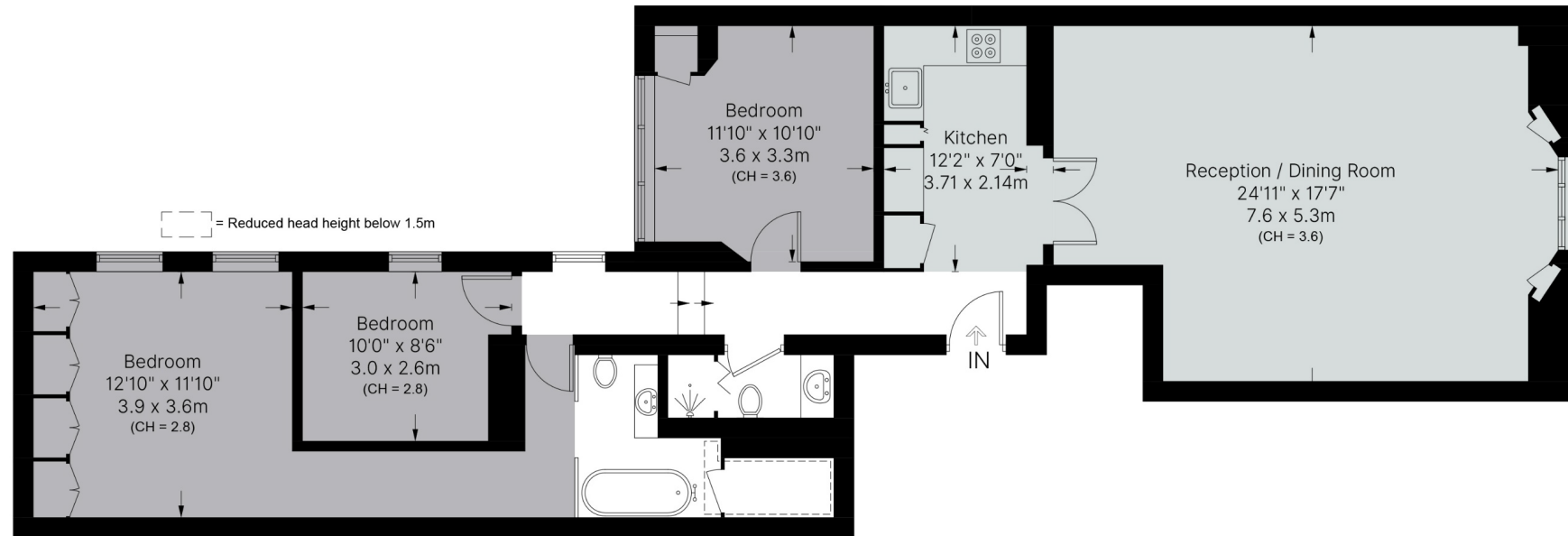


## WESTBOURNE TERRACE, W2

Approximate Area = 104.5 sq m / 1125 sq ft  
(Excluding Reduced Head Room)

Reduced Head Room = 1.8 sq m / 19 sq ft

Total = 106.3 sq m / 1444 sq ft



Ground Floor

Measurements are approximate, not to scale

Paddington & Bayswater | 020 7567 5770 | paddington@winkworth.co.uk

*winkworth.co.uk*

Winkworth wishes to inform prospective buyers and tenants that these particulars are a guide and act as information only. All our details are given in good faith and believed to be correct at the time of printing but they don't form part of an offer or contract. No Winkworth employee has authority to make or give any representation or warranty in relation to this property. All fixtures and fittings, whether fitted or not are deemed removable by the vendor unless stated otherwise and room sizes are measured between internal wall surfaces, including furnishings.

**Winkworth**