



Palermo Road, NW10

£1,395,000 *Freehold*



A stunning, generously proportioned, five bedroom family home, recently renovated and conveniently located in Kensal Green.

KEY FEATURES

- FREEHOLD
- FULLY EXTENDED
- 5 BEDROOMS
- CLOSE TO TUBE & OVERGROUND
- FAMILY HOME
- NO-UPPER CHAIN



Kensal Rise & Queens Park

0208 960 4947 | kensalrise@winkworth.co.uk

Winkworth

for every step...

Winkworth wishes to inform prospective buyers and tenants that these particulars are a guide and act as information only. All our details are given in good faith and believed to be correct at the time of printing but they don't form part of an offer or contract. No Winkworth employee has authority to make or give any representation or warranty in relation to this property. All fixtures and fittings, whether fitted or not are deemed removable by the vendor unless stated otherwise and room sizes are measured between internal wall surfaces, including furnishings.



DESCRIPTION

We are excited to present this superb family home with accommodation arranged over three floors, measuring over 2020sqft.

With attention to detail and quality throughout, the property's original period features have been preserved. Downstairs there is a formal reception room with a working wood burning stove. The owners have cleverly incorporated the rear reception room into the fully extended kitchen/diner creating a beautiful light space for the family to entertain and relax. There is also a downstairs cloakroom, separate utility and ample storage making this an extremely practical family home.

Between the first floor and the second floor loft conversion, you will find five bedrooms, four of which are generous doubles, as well as a large family bathroom with bath and separate shower unit, and a

shower room servicing the two bedrooms on the top floor.

Further benefits include a lovingly maintained, south facing, private landscaped garden with a decked patio area, ample storage spaces throughout and excellent proximity to the local amenities and transport links. This house is a must see.





LOCATION

Palermo Road is a conveniently located, cherry blossom lined street in Kensal Green, only a short walk from Willesden Junction station. This is a popular destination for families looking for more space for their money, with quick transport links across town via both branches of the London Overground and direct access into Central London via the Bakerloo Line.

If it's green space you're looking for, both King Edward's and Roundwood Parks are within easy walking distance. Cafes, local shops and brunch spots are close by on the popular College and Chamberlayne Roads. Highly recommended.

For more information, scan the QR code or visit the link below



SCAN ME

<https://www.winkworth.co.uk/sale/property/KQP240389>

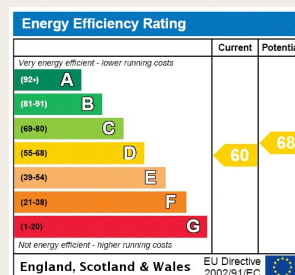
Where no figures are shown, we have been unable to ascertain the information. All figures that are shown were correct at the time of printing.

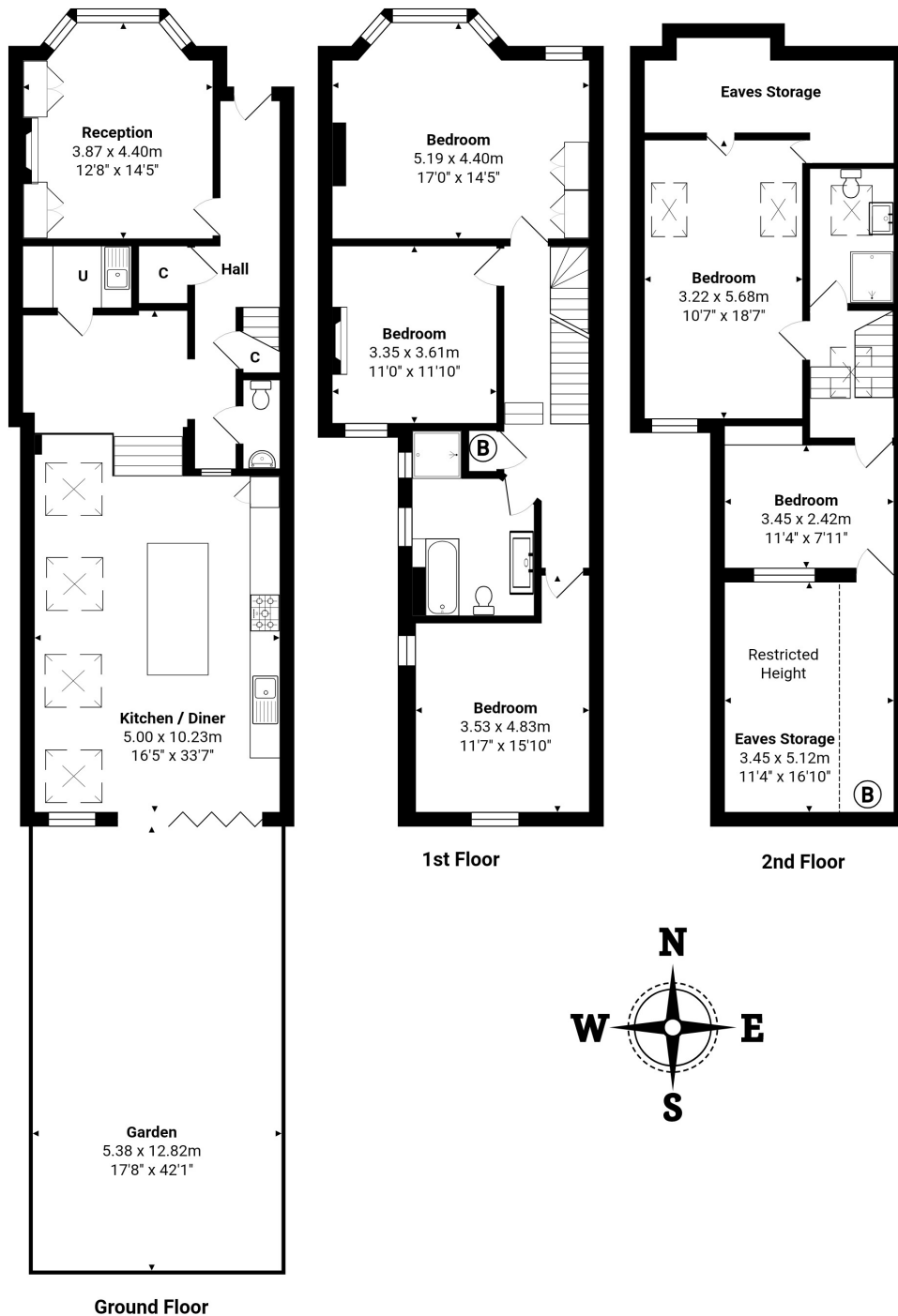
MATERIAL INFO

Tenure: Freehold

Council Tax Band: E

EPC rating: D





Total Area: 187.9 m² ... 2023 ft² (excluding eaves storage, garden)
 All measurements are approximate and for display purposes only

Kensal Rise & Queens Park

0208 960 4947 | kensalrise@winkworth.co.uk

Winkworth

for every step...

Winkworth wishes to inform prospective buyers and tenants that these particulars are a guide and act as information only. All our details are given in good faith and believed to be correct at the time of printing but they don't form part of an offer or contract. No Winkworth employee has authority to make or give any representation or warranty in relation to this property. All fixtures and fittings, whether fitted or not are deemed removable by the vendor unless stated otherwise and room sizes are measured between internal wall surfaces, including furnishings.