



HARBLEDOWN ROAD, UNITED KINGDOM, SW6

£675,000 LEASEHOLD

A beautifully renovated and immaculately presented two-bedroom flat on a prestigious street in prime Parsons Green.

Fulham & Parsons Green | 020 7731 3388 | fulham@winkworth.co.uk

Winkworth

for every step...

winkworth.co.uk



DESCRIPTION:

The property is set on the second floor of a well-maintained Victorian terraced conversion. There is a wonderful open-plan kitchen, dining and sitting room. This light and bright room is an excellent space for entertaining. There is a large master bedroom with a fantastic ensuite shower room. The second double bedroom benefits from built-in storage and is served by an additional bathroom. There is also a useful utility cupboard.

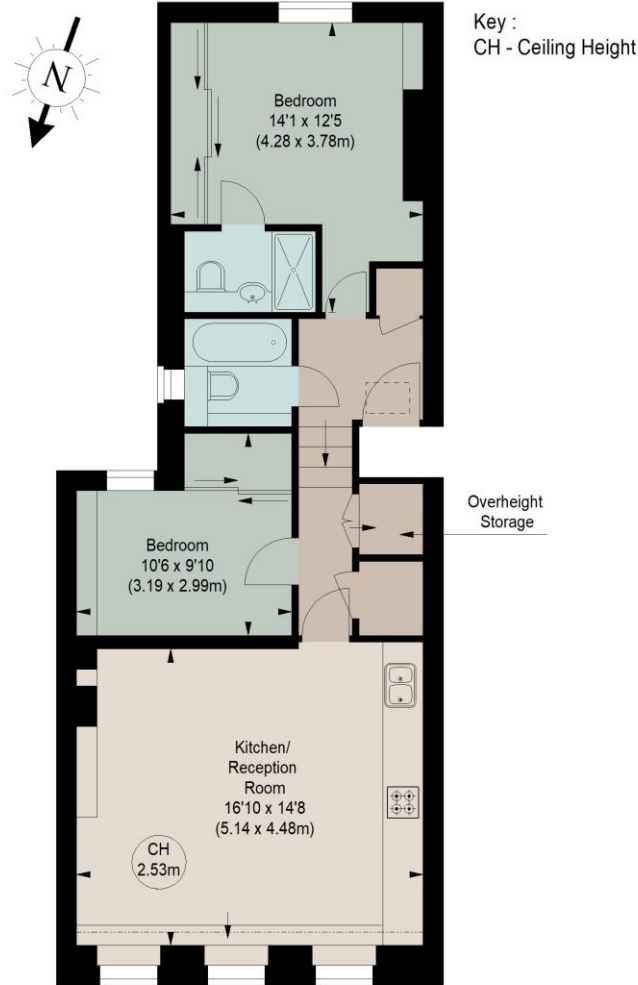
Harbledown Road is situated between Parsons Green Lane and Shottendane Road and is only c. 0.1 miles from Parsons Green underground station. It's ideally placed to benefit from the shops, bars and restaurants in Parsons Green and on the Fulham Road.





HARBLEDOWN ROAD, SW6

Approximate gross internal area
636 sq ft / 59.08 sq m



SECOND FLOOR

The floor plan is not to scale and measurements and areas shown are approximate and therefore should be used for illustrative purposes only. The plan has been prepared in accordance with the RICS code of Measuring Practice and whilst we have confidence in the information produced, it must not be relied on. If there is any aspect of particular importance, you should carry out or commission your own inspection of the property.

This floorplan is for illustration purposes only and is not to scale. The position and size of doors, windows, appliances and other features are approximate.

Tenure:	Leasehold
Term:	Expires - 16/05/2111
Service Charge:	£0 per annum
Ground Rent:	£ 0 Annually (subject to increase)
Council Tax Band:	D

Where no figures are shown, we have been unable to ascertain the information. All figures that are shown were correct at the time of printing.

Fulham & Parsons Green | 020 7731 3388 | fulham@winkworth.co.uk

Winkworth

for every step...

winkworth.co.uk

Winkworth wishes to inform prospective buyers and tenants that these particulars are a guide and act as information only. All our details are given in good faith and believed to be correct at the time of printing but they don't form part of an offer or contract. No Winkworth employee has authority to make or give any representation or warranty in relation to this property. All fixtures and fittings, whether fitted or not are deemed removable by the vendor unless stated otherwise and room sizes are measured between internal wall surfaces, including furnishings.