



Farm Drive, Petersfield, Hampshire, GU31

Guide Price: £650,000 *Freehold*



A beautifully presented modern family home overlooking a small green in a popular development to the south of the town centre with a garage, parking and a west-facing garden.

KEY FEATURES

- Four-bedroom detached family home
- On a popular development
- West facing garden
- Parking and garage
- No onward chain
- Approximately 0.5 miles from Petersfield High Street



Petersfield

01730 267274 | petersfield@winkworth.co.uk

Winkworth

for every step...



DESCRIPTION

The property is a beautifully presented, modern, detached family home with brick and rendered elevations under a tiled roof and accommodation over two floors. The layout can be seen in the floorplan but of particular note is the tremendous triple aspect kitchen/dining room with matching floor and mounted units and double doors lead to the rear garden. From the hall, stairs rise to the first floor landing, off which are four bedrooms and a family bathroom. The main bedroom has its own en-suite shower room. Outside, the house is approached by a pedestrian path to the front door. To the left of the house is a drive with parking for two cars leading to a detached single garage. The garden lies to the rear, is laid to lawn, enclosed by fencing and being west-facing, is the perfect spot to unwind during the long summer afternoons.

ACCOMMODATION

Main bedroom with en suite shower room, three further bedrooms, family bathroom, reception room, kitchen/dining room, downstairs cloakroom with WC, hall, single garage, parking and a west facing garden.

LOCATION

The property is located on a popular development situated towards the southern fringes of Petersfield. Petersfield is situated in the heart of The South Downs National Park and offers a variety of amenities in a bustling town centre. Shops include Waitrose, M&S Food, Tesco and there are numerous boutiques, cafes and further shops. The train station provides a direct service to London Waterloo to the north (in a little over an hour) and Portsmouth to the south. The town has many active clubs and societies with golf available at Petersfield and Liphook, horse and motor racing at Goodwood, The Festival Theatre in Chichester, polo at Cowdray Park and sailing along the South Coast. There are many popular schools in the area including Churcher's College, Bedales, Ditcham Park and The Petersfield School.

DIRECTIONS

From our office head to the bottom of the High Street and turn right into Dragon Street by the War Memorial. At the first roundabout continue straight over into The Causeway passing The Petersfield School on your right. Take the next left into Weald Way and turn right at the T junction. The property will be found after a short distance on your right opposite the green.

MATERIAL INFORMATION

Method of Sale: Private treaty

Tenure: Freehold

Construction: Brick and tiles

Services: Mains gas, electricity, water and drainage

Council Tax: East Hampshire District Council. Band "E"

EPC Rating: "B" (84)

Service Charge: Latest figures TBC

Rights & Easements: None known

Flooding: To the best of our knowledge, there has been no internal flooding

Restrictions: Within the South Downs National Park

Mobile Signal: Likely (Ofcom)

Broadband Availability: Superfast (Ofcom)

Parking: Garage and off-street parking

Viewings: Strictly by appointment with Winkworth Petersfield

WHAT3WORDS: ///alering.rags.ferried

Ref: AB/240244/1



Important Notice

Winkworth for themselves and the Vendors or lessors of this property whose agents they are, give notice that: i) These particulars have been prepared in good faith to give a fair overall view of the property, do not form any part of an offer or contract, and must not be relied upon as statements or representations of fact. ii) Purchasers must rely on their own enquiries by inspections or otherwise on all matters including planning or other consents. iii) The information in these particulars is given without responsibility on the part of Winkworth or their clients. Neither Winkworth nor their employees have any authority to make or give any representations or warranties whatever in relation to this property. iv) Any areas, measurements or distances referred to are given as a guide only and are not precise. Photographs are not necessarily comprehensive nor current; no assumption should be made that any contents shown are included in the sale nor with regards to parts of the property which have not been photographed. v) Nothing in these particulars should be deemed to be a statement that the property is in good structural condition or that any services or equipment are in good working order – nor have Winkworth tested them. All fixtures and fittings, whether fitted or not are deemed removable by the vendor unless stated otherwise and room sizes are measured between internal wall surfaces, including furnishings.



Petersfield

01730 267274 | petersfield@winkworth.co.uk

Winkworth

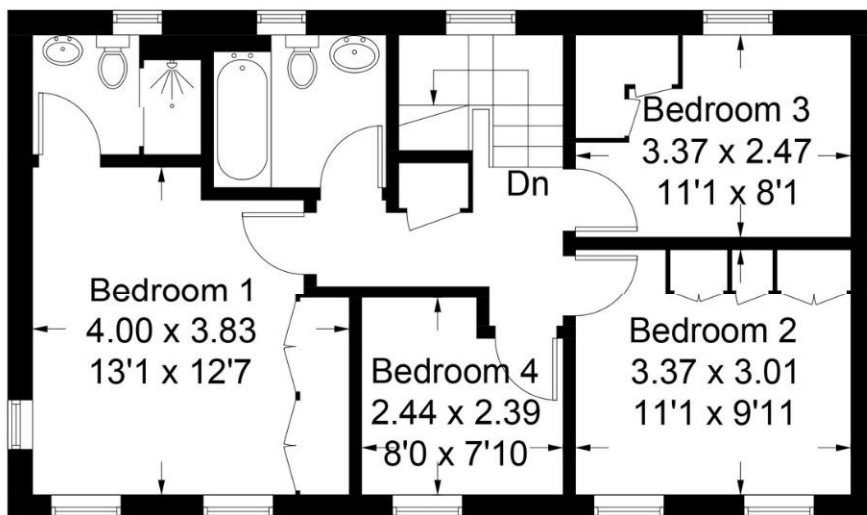
for every step...

Farm Drive, GU31

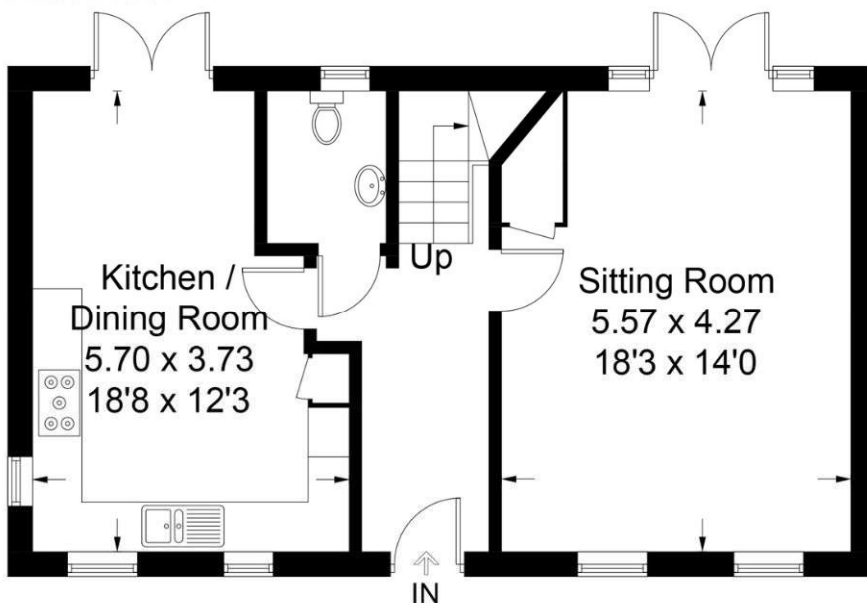
Approximate Gross Internal Area = 112.0 sq m / 1205 sq ft

Garage = 22.4 sq m / 241 sq ft

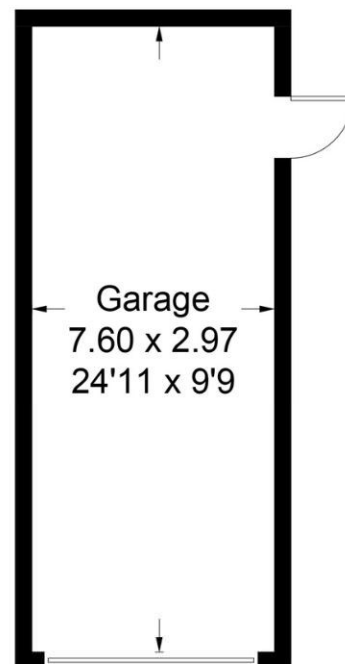
Total = 134.4 sq m / 1446 sq ft



First Floor



Ground Floor



(Not Shown In Actual Location / Orientation)

PRODUCED FOR WINKWORTH ESTATE AGENTS.

Whilst every attempt has been made to ensure the accuracy of the floorplan, measurements of doors, windows and rooms are approximate. These plans are for representation purposes only as defined by RICS Code of Measuring Practice and used as such by any prospective purchaser. Created by Emzo Marketing 2025.

Winkworth wishes to inform prospective buyers and tenants that these particulars are a guide and act as information only. All our details are given in good faith and believed to be correct at the time of printing but they don't form part of an offer or contract. No Winkworth employee has authority to make or give any representation or warranty in relation to this property. All fixtures and fittings, whether fitted or not are deemed removable by the vendor unless stated otherwise and room sizes are measured between internal wall surfaces, including furnishings.

Petersfield

01730 267274 | petersfield@winkworth.co.uk

Winkworth

for every step...