



WHITHAM COURT, UPPER TOOTING ROAD, LONDON, LONDON, SW17
OIEO £305,000 LEASEHOLD

**A SUPERB ONE BEDROOM APARTMENT
SITUATED WITHIN STRIKING DISTANCE TO
TOOTING BEC STATION**

Tooting | 020 8767 5221 | tooting@winkworth.co.uk

Winkworth

for every step...

winkworth.co.uk



DESCRIPTION

A superb one bedroom apartment situated within striking distance to Tooting Bec station. The property comprises, large reception room, good sized kitchen with ample storage and integral appliances, generous size double bedroom with built in wardrobes and a large bathroom. The development further benefits from a lift servicing all floors and gated private parking.

The property is ideally located moments from Tooting Bec Station, Tooting Common and local amenities, while all the amenities of Tooting Broadway, Balham and Wandsworth Common are only a short distance away.

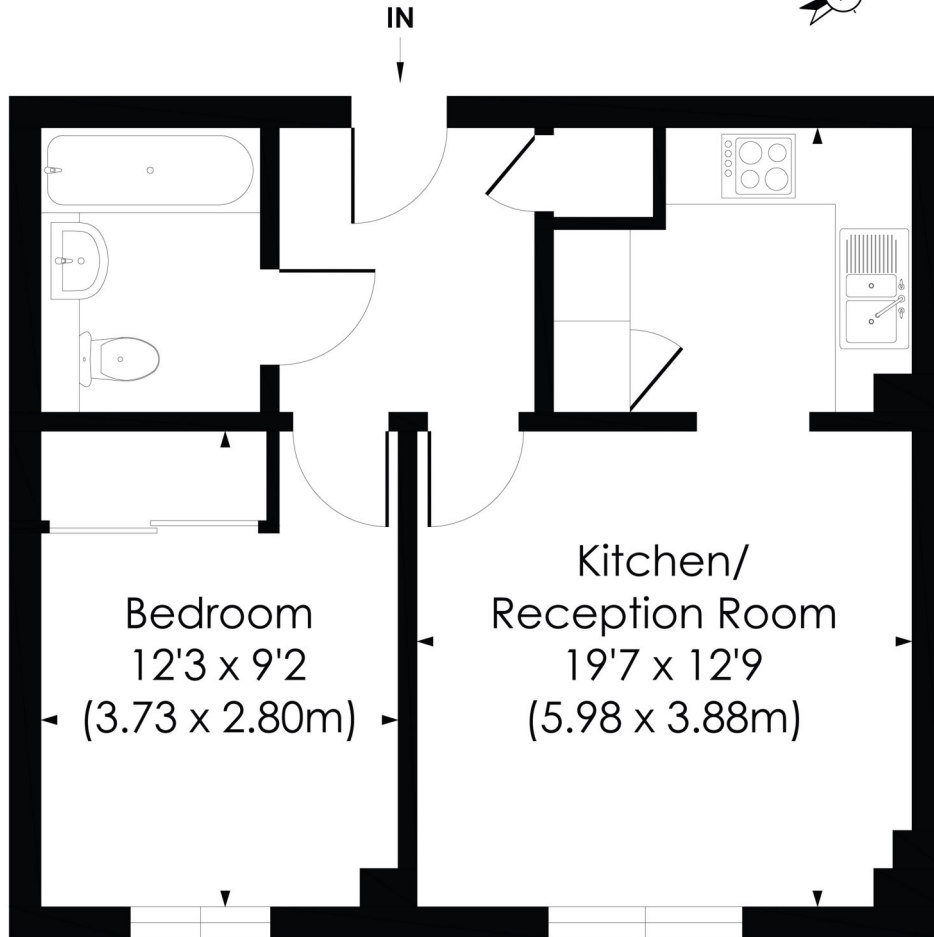




UPPER TOOTING ROAD, SW17

Approx. Gross Internal Floor Area

440 Sq. ft/40.84 Sq. m



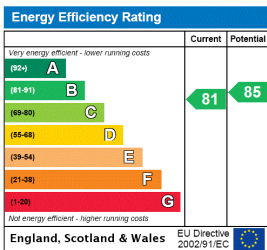
SECOND FLOOR

© Pixangle Property Marketing Ltd. info@pixangle.com Tel: 0208 870 2118



This floor plan has been prepared for the purpose of illustration only in accordance with the latest RICS code of measuring practice and is not to scale. All measurements and areas are approximate and whilst every effort has been made to ensure the accuracy of the plan contained here, no responsibility is taken for any error, omission or misstatement.

This floorplan is for illustration purposes only and is not to scale. The position and size of doors, windows, appliances and other features are approximate.



Tooting | 020 8767 5221 | tooting@winkworth.co.uk



for every step...

winkworth.co.uk

Winkworth wishes to inform prospective buyers and tenants that these particulars are a guide and act as information only. All our details are given in good faith and believed to be correct at the time of printing but they don't form part of an offer or contract. No Winkworth employee has authority to make or give any representation or warranty in relation to this property. All fixtures and fittings, whether fitted or not are deemed removable by the vendor unless stated otherwise and room sizes are measured between internal wall surfaces, including furnishings.