



Tamar Close
Ferndown BH22 8XE
OFFERS OVER £300,000

Winkworth



**OFFERS OVER £300,000
FREEHOLD**

This modern and spacious three bedroom freehold house has been totally refurbished throughout to an excellent standard.

**Adjoining heathland with a wooded outlook from a good size rear garden, the property further benefits from a garage in a nearby block and
NO ONWARD CHAIN.**

This lovely home is perfect for first time buyers, those downsizing or looking for an excellent buy to let.

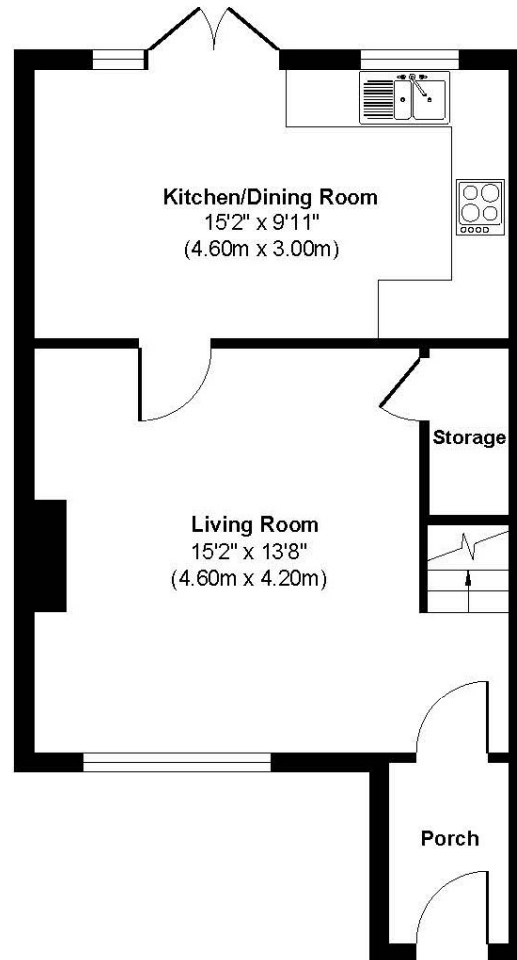
**Fully Refurbished Throughout
Three Bedrooms
Luxury Bathroom
Popular Location
Garage
Modern Kitchen/Diner
Entrance Porch
Freehold House
No Onward Chain
Good Size Rear Garden**

EPC TBC | Council Tax Band C

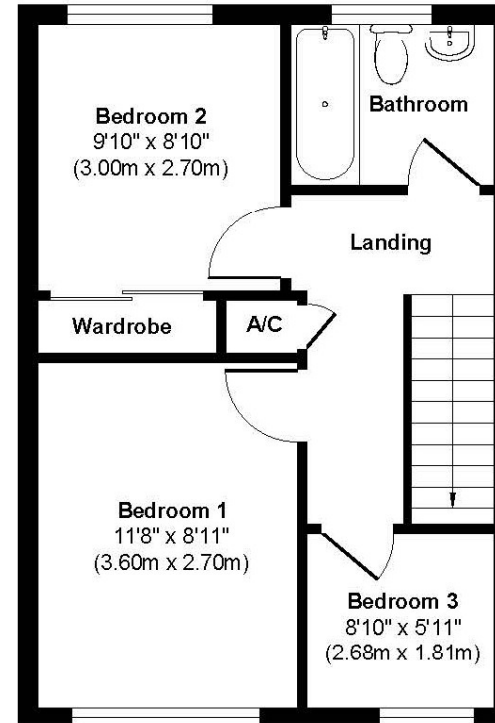
**01202 434365
ferndown@winkworth.co.uk**



Tamar Close



Ground Floor Approximate
Floor Area 402 sq. ft
(37.37 sq. m)



First Floor Approximate Floor
Area 360 sq. ft
(33.49 sq. m)

Approx. Gross Internal Floor Area 762 sq. ft / 70.86 sq. m.
Illustration for identification purposes only, measurements approximate and not to scale.



LOCATION

Just a short distance from Ferndown town centre, within catchment of Ferndown Schools and close to a range of amenities including a large Sainsburys. There are bus routes within a short walk giving you easy access to Bournemouth, Poole and Wimborne, all of which have an excellent range of shops, bars, restaurants and leisure facilities. Award winning sandy beaches are just twenty minutes away and the A31 provides quick access to the New Forest, Southampton, London and beyond for the commuter by car.

Winkworth Ferndown

406 Ringwood Road, Ferndown, Dorset, BH22 9AU

01202 434365 | ferndown@winkworth.co.uk

winkworth.co.uk/ferndown

Winkworth