



KEMPTON COURT, 2 DURWARD STREET, E1
£2,850 PER MONTH PART FURNISHED

**A SUPERB 2 BEDROOM PROPERTY WITH AN ADDITIONAL SINGLE
 BEDROOM / STUDY SET WITHIN AN ATTRACTIVE GATED
 DEVELOPMENT MOMENTS FROM WHITECHAPEL CROSSRAIL.**

Shoreditch | 020 7749 7650 | shoreditch@winkworth.co.uk

Tenant Fees Apply: Details of fees for tenant referencing, tenancy agreement admin fees and renewal fees are available on the Winkworth website and the link can be found with the displayed rent for the property. Tenants should ensure they are fully conversant with these upfront fees and other costs that are involved at the outset of the tenancy before making an offer to rent and your local Winkworth office will provide written details upon request.

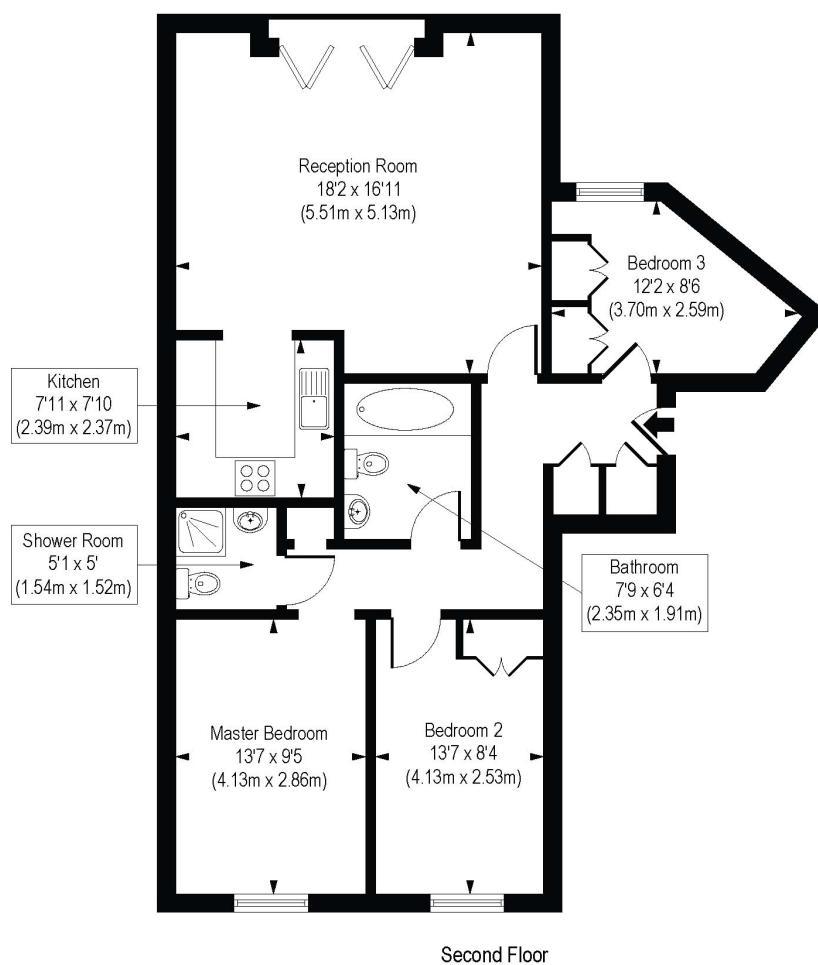


DESCRIPTION:

A superb 2 bedroom property with an additional single bedroom / study set within an attractive gated development moments from Whitechapel Crossrail.. This recently redecorated property is very modern and bright, it is ideal for professionals due to its excellent location near to Whitechapel Station that provides access to the Hammersmith & City and Circle tube lines as well as the Overground and the Crossrail making it accessible to most of London. The property boasts a large living space and 2 double bedrooms and single bedroom ideal for an office space or walk in wardrobe and a Modern fitted kitchen and two bathrooms, one en-suite to the main bedroom. Kempton Court is situated less than 1 mile from the city and has a great number of restaurants, shops and amenities nearby.



Kempton Court, Durward Street, E1
Approx. Gross Internal Floor Area 886 sq. ft / 82.32 sq. m



COMPLIANT WITH RICS CODE OF MEASURING PRACTICE. Floorplan is for illustrative purposes only and is not to scale. Every attempt has been made to ensure the accuracy of the floorplan shown, however all measurements, fixtures, fittings and data shown are an approximate interpretation for illustrative purposes only. Liability for errors, omissions or mis-statement through negligence or otherwise is hereby excluded.

This floorplan is for illustration purposes only and is not to scale. The position and size of doors, windows, appliances and other features are approximate.