



Northumberland Place, W2

£895 per week (£3,878.33 PCM) *Unfurnished*



A CHARMING AND NEWLY REFURBISHED TWO BEDROOM MAISONETTE WITH PRIVATE GARDEN IN THIS PRETTY PERIOD CONVERSION.



Notting Hill Lettings

0207 727 3227 | nottinghill@winkworth.co.uk

Winkworth

for every step...

*Tenant fees may apply: Details of tenant fees are available on the Winkworth website and the link can be found with the displayed rent for the property. Tenants should ensure they are fully conversant with any fees before making an offer to rent and your local Winkworth office can provide written details upon request.



DESCRIPTION

The flat is laid out over two levels and comprises a large double bedroom with built in storage, second single bedroom, smartly finished bathroom, separate kitchen and large double reception room with high ceilings and floor to ceiling sash windows. The property has a Juliet balcony to the front of the property and also benefits the use of the front outside space in addition to the back garden. The property is available unfurnished and viewings are highly recommended.

Utilities:

Electricity – Mains

Water – Mains

Sewerage – Mains

Heating – Gas

Broadband <https://checker.ofcom.org.uk/en-gb/broadband-coverage>

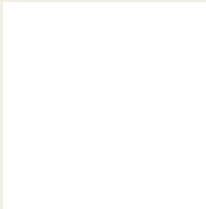
Mobile Coverage <https://checker.ofcom.org.uk/en-gb/mobile-coverage>

LOCATION:

Northumberland Place is a quiet residential tree lined street, running north from Artesian Road, moments away from the popular stretch of Westbourne Grove, home to many of Notting Hill's most popular boutiques and restaurants.



For more information, scan the QR code or visit the link below

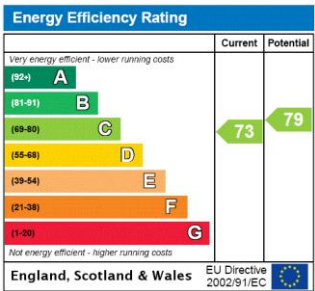


<https://www.winkworth.co.uk/rent/property/NHL090244>

Where no figures are shown, we have been unable to ascertain the information. All figures that are shown were correct at the time of printing.

MATERIAL INFO

- Deposit: £4,475
- Holding Deposit: £895
- Council Tax Band: E (Westminster)

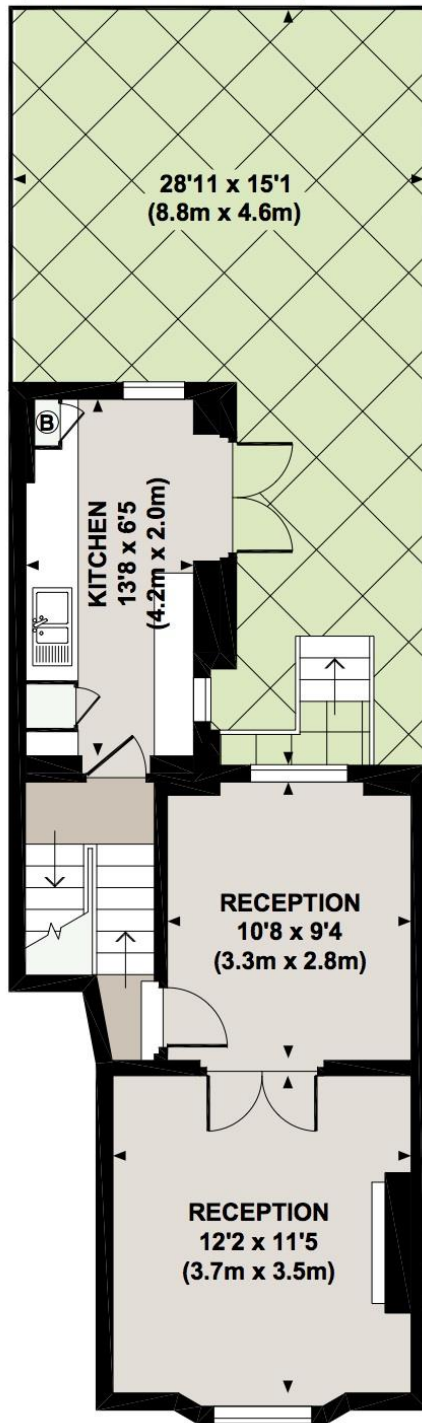


NORTHUMBERLAND PLACE, W2

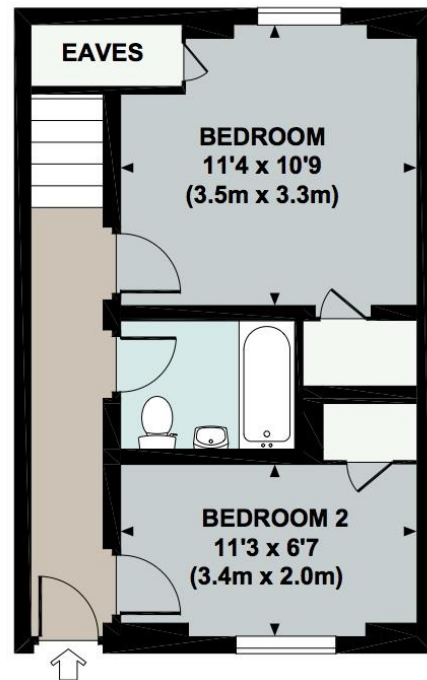


Approx. gross internal area 730 Sq Ft. / 67.9 Sq M.

Approx. gross internal area 743 Sq Ft. / 69.1 Sq M. Inc. Eaves Storage



GROUND FLOOR



LOWER GROUND FLOOR



All measurements are approximate and for illustration purposes only as defined by the RICS Code of Measuring Practice © 2013
Dowling Jones Design www.dowlingjones.com 020 7610 9933

Notting Hill Lettings

0207 727 3227 | nottinghill@winkworth.co.uk

Winkworth

for every step...

Winkworth wishes to inform prospective buyers and tenants that these particulars are a guide and act as information only. All our details are given in good faith and believed to be correct at the time of printing but they don't form part of an offer or contract. No Winkworth employee has authority to make or give any representation or warranty in relation to this property. All fixtures and fittings, whether fitted or not are deemed removable by the vendor unless stated otherwise and room sizes are measured between internal wall surfaces, including furnishings.