



**The Malthouse, Brewery Lane, Romsey, Hampshire, SO51 8JX**

**Winkworth**



## **DELIGHTFUL TOWN CENTRE APARTMENT**

**We are delighted to offer this extremely well presented two double bedroom apartment located in the heart of Romsey town centre, within just a few minutes' walk of its extensive amenities. The cathedral cities of Winchester and Salisbury are within easy commute. Along with the commercial centres of Southampton and Bournemouth, both with international airports. In addition, there are good motorway and rail links to London and beyond.**

**The Malthouse was built in 1899, and was used for drying and storing barley used by local brewers Strong & Co. in recent years having been converted into residential dwellings. This spacious second floor apartment is well arranged and very well presented. The accommodation comprises a welcoming entrance hall, an open plan living room with dining area with double aspect windows and a well fitted kitchen with plenty of eye and base unit cupboards. There are two large double bedrooms and a bathroom with shower over bath. The hallway benefits built-in storage. The block includes a serviced lift. Outside there is off road parking for one car. Viewing is strongly recommended to appreciate the size and location of this property.**

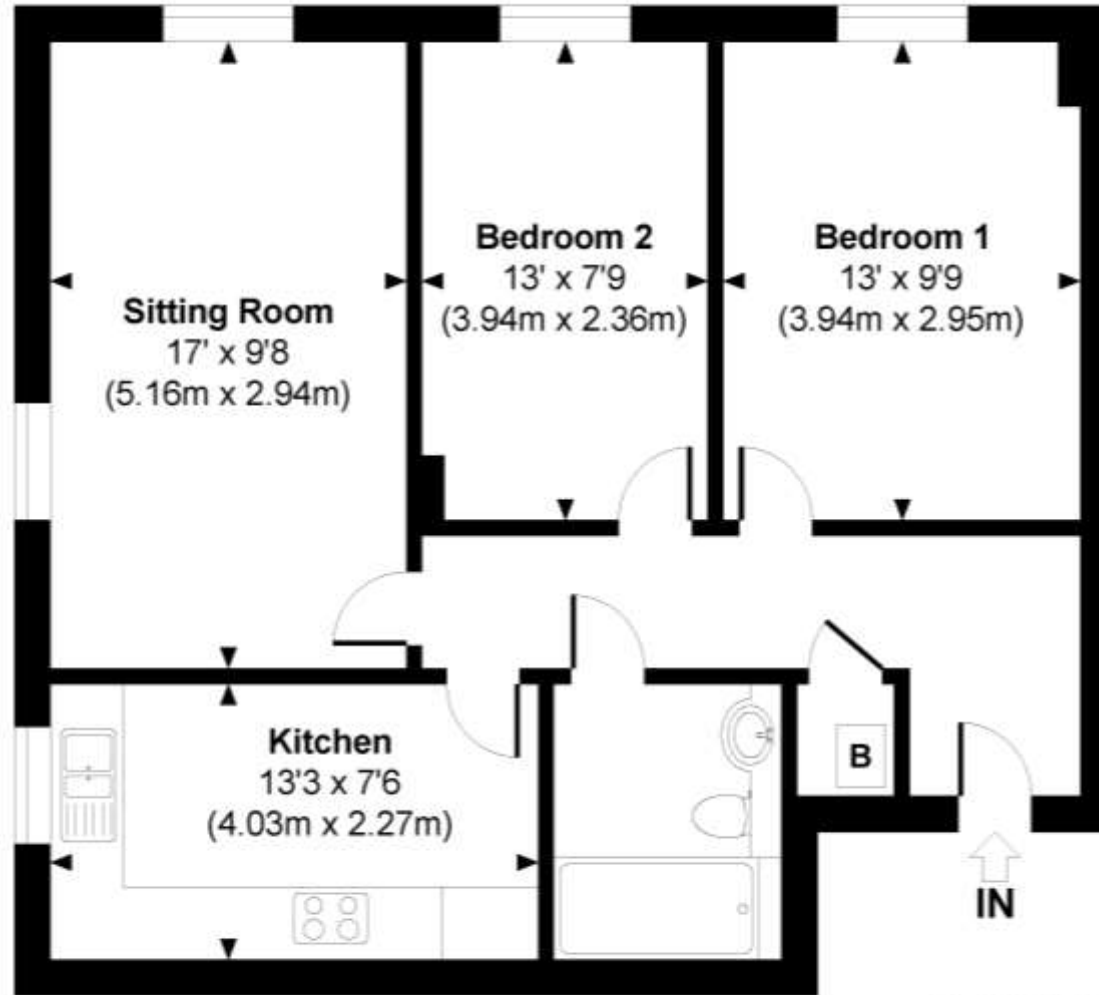


# Winkworth

**Address:** The Malthouse, Brewery Lane, Romsey SO51 8JX

**Council Tax:** Band 'C'

**Service Charges:** 01/01/21 - 30/06/21  
£1,290.43 (x2 £2580.86)  
**2021 Ground Rent** was £250  
**The Term** is 125 years from 1st Jan 2006  
(110 left)



**SECOND FLOOR**

**The Malthouse**  
Approximate Gross Internal Area  
Total = 657 Sq Ft / 61.00 Sq M



© www.propertyfocus.co | Professional Property Photography & Floorplans

This plan is for illustrative purposes only and is not to scale. If specified, the Gross Internal Area (GIA), dimensions, floor plan orientation and the size and placement of features are approximate and should not be relied on as a statement of fact. No guarantee is given for the GIA and no responsibility is taken for any error, omission or misrepresentation.

[winkworth.co.uk/romsey](http://winkworth.co.uk/romsey)

## Winkworth Romsey

18 Market Place, Romsey, Hampshire, SO51 8NA  
01794 511911 | [romsey@winkworth.co.uk](mailto:romsey@winkworth.co.uk)

[winkworth.co.uk/romsey](http://winkworth.co.uk/romsey)

## Winkworth Winchester

2 Black Swan Buildings, Southgate Street,  
Winchester, Hampshire, SO23 9DT  
01962 866777 | [winchester@winkworth.co.uk](mailto:winchester@winkworth.co.uk)

## Winkworth Mayfair & Country House Department

11 Berkeley Street, Mayfair, London, W1J 8DS  
020 7871 0589 | [countryhouse@winkworth.co.uk](mailto:countryhouse@winkworth.co.uk)

# Winkworth

See things differently