

SHAKESPEARE ROAD, N3
£1,400 PER MONTH FURNISHED

Finchley | 020 8349 3388 | finchley@winkworth.co.uk

Winkworth

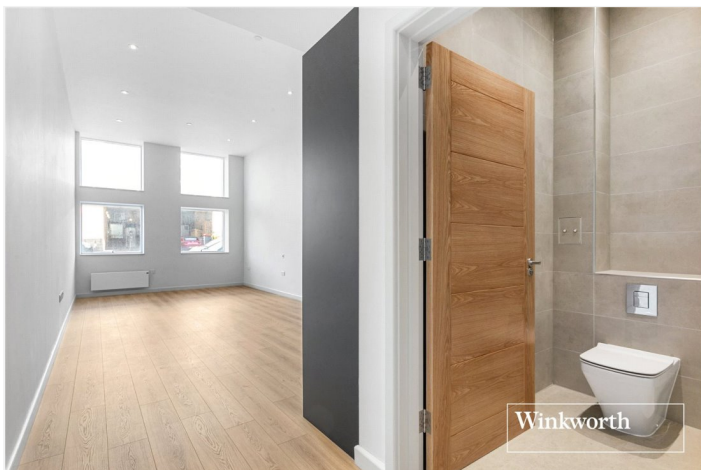
for every step...

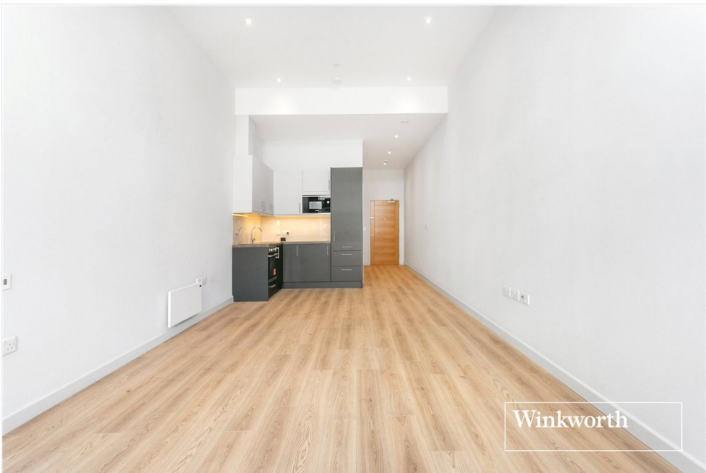
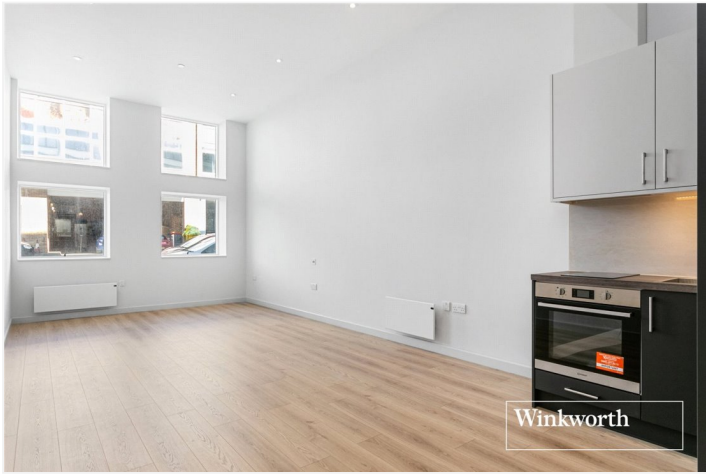
winkworth.co.uk



DESCRIPTION:

Winkworth are pleased to offer a selection of brand new Studio apartments in the heart of Finchley Central. Situated in a secure development within a two minute walk to Finchley Central underground station and shopping amenities. The property comprises of large open plan kitchen/ living space & separate modern tiled shower room. Further benefits include video entry system, lift in block, high ceilings, wooden flooring throughout & triple glazed windows. Offered furnished or unfurnished. Available NOW!





Shakespeare Road, N3
Approx. Gross Internal Floor Area 438 sq. ft / 40.66 sq. m



All measurements of walls, doors, windows, fittings and appliances, including their size and location, are shown as standard sizes and do not constitute any warranty or representation by the seller, their agent or CP Creative. Any intending purchaser must satisfy himself by inspection or otherwise as to the correctness of the information contained in these plans. This plan is for illustrative purposes only and should be used as such by any prospective purchasers.

Winkworth

This floorplan is for illustration purposes only and is not to scale. The position and size of doors, windows, appliances and other features are approximate.

Finchley | 020 8349 3388 | finchley@winkworth.co.uk

Winkworth

for every step...

winkworth.co.uk

Winkworth wishes to inform prospective buyers and tenants that these particulars are a guide and act as information only. All our details are given in good faith and believed to be correct at the time of printing but they don't form part of an offer or contract. No Winkworth employee has authority to make or give any representation or warranty in relation to this property. All fixtures and fittings, whether fitted or not are deemed removable by the vendor unless stated otherwise and room sizes are measured between internal wall surfaces, including furnishings.