



Roland Gardens, South Kensington, London, SW7

£1,150 per week* / £4,983.33 per month – Furnished or Unfurnished

A wonderfully light and spacious 3 bedroom property situated on the top floor of this handsome period building.

3 Bedrooms | 1 Reception Room | 2 Bathrooms | Kitchen | Third Floor Flat | 1,131 sq ft approx. | EPC: D

APPLICANT FEES MAY BE APPLICABLE
HOLDING DEPOSIT OF 1 WEEK'S RENT
DEPOSIT OF 6 WEEKS' RENT

Winkworth

winkworth.co.uk

for every step...

DESCRIPTION

Entered on the second floor of an immaculately maintained building, this superb apartment offers a large, West-facing reception room with wooden floors and attractive marble fireplace. The separate kitchen is fully fitted with hardwood cabinetry and all necessary appliances.

The two larger bedrooms are located at the front of the building, both offering excellent proportions and built-in storage. The third bedroom offers the perfect single room or study space. All bedrooms are serviced by two bathrooms (one en-suite).

The property is available from beginning of February on a furnished or unfurnished basis.



Approximate Gross Internal Floor Area
1,131 sq ft / 105.0 sq m

ACCOMMODATION

3 Bedrooms, 1 Reception Room, 2 Bathrooms, Kitchen, Third Floor Flat, Furnished or Unfurnished, 1,131 sq ft approx.

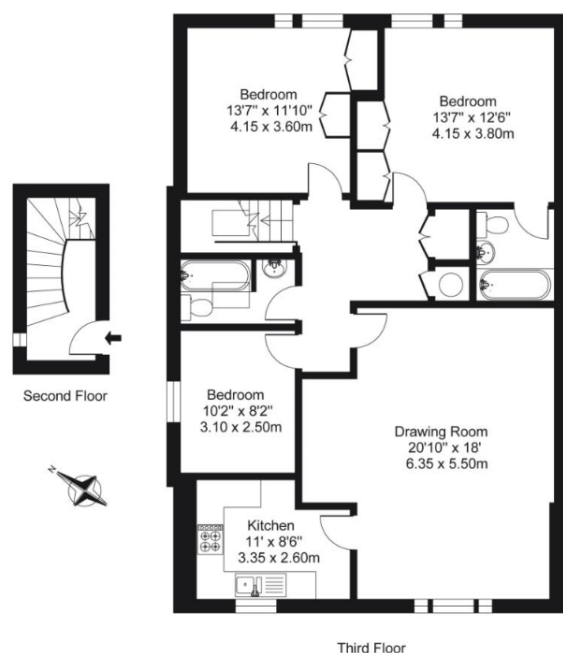
NEAREST PUBLIC TRANSPORT

Gloucester Road Tube Station
South Kensington Tube Station

COUNCIL TAX BAND

Band G

Score	Energy rating	Current	Potential
92+	A		
81-91	B		
69-80	C		80 C
55-68	D	62 D	
39-54	E		
21-38	F		
1-20	G		



This floorplan is for illustration purposes only and is not to scale. The position and size of doors, windows, appliances and other features are approximate.

South Kensington Lettings | 020 7370 6767 | lettings.southken@winkworth.co.uk

*Please note, rent cannot be paid on a weekly basis.
Photos as previously furnished.

winkworth.co.uk

Winkworth wishes to inform prospective buyers and tenants that these particulars are a guide and act as information only. All our details are given in good faith and believed to be correct at the time of printing but they don't form part of an offer or contract. No Winkworth employee has authority to make or give any representation or warranty in relation to this property. All fixtures and fittings, whether fitted or not are deemed removable by the vendor unless stated otherwise and room sizes are measured between internal wall surfaces, including furnishings.



for every step...