



WESTBOURNE TERRACE, BAYSWATER, W2  
**£795,000 SHARE OF FREEHOLD**

Winkworth





## WESTBOURNE TERRACE, W2

**Located in W2 - nr Hyde Park - a well-proportioned, one bedroom, first and second floor duplex apartment. Set in a handsome Grade II period building, with share of freehold and an ornate, southwest facing curved private balcony.**

Westbourne Terrace is a most attractive tree lined street, running north from Hyde Park, with Paddington Station (Heathrow Express and the Elizabeth Line), Lancaster Gate (central line) and The A40 close at hand.

This property is offered for sale with no upward chain and share of freehold.

Leasehold, plus share of freehold: About 993 years remaining

Service charge - About £2,400 per annum

Ground rent - Peppercorn

Council Tax Band: E





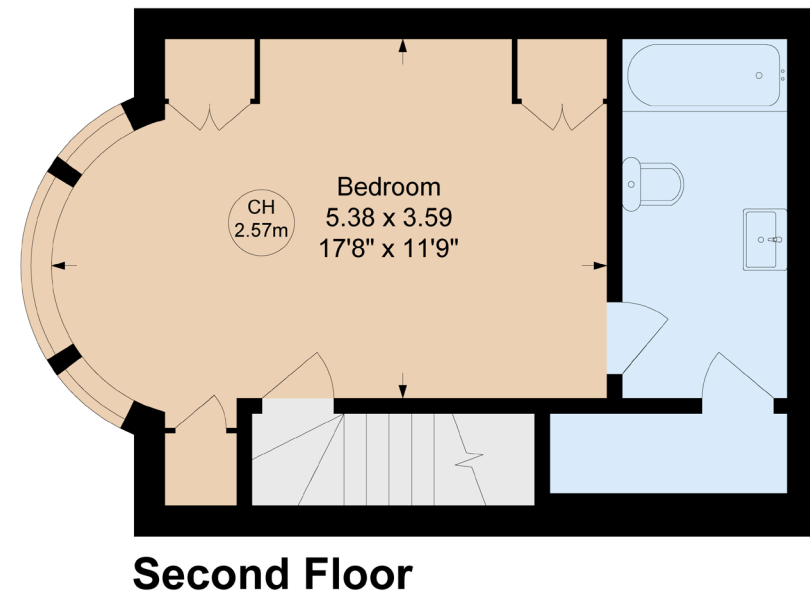
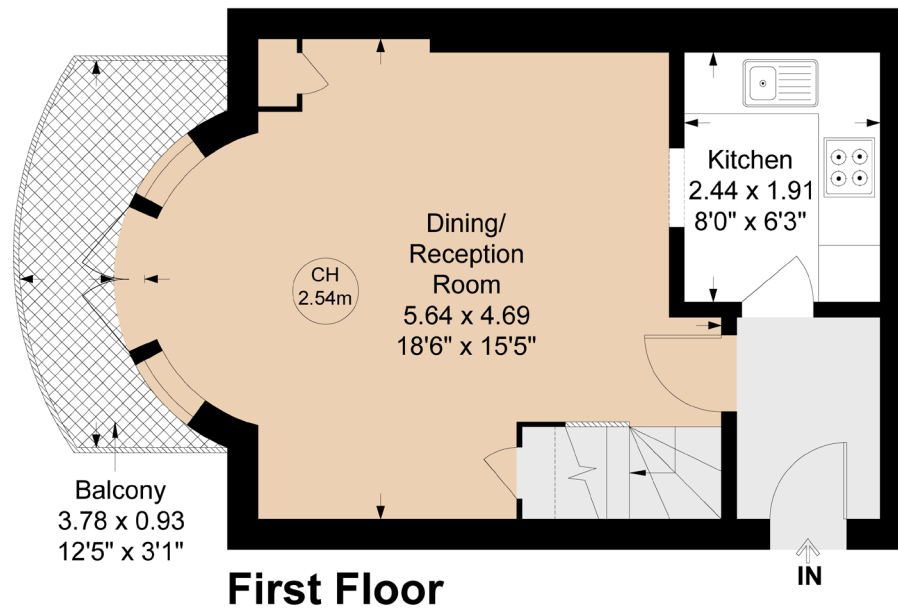


# Westbourne Terrace, W2

Approximate Gross Internal Area = 60.07 sq m / 647 sq ft

Key :

CH - Ceiling Height



Not to scale, for guidance only and must not be relied upon as a statement of fact.

All measurements and areas are approximate only

Paddington & Bayswater | 020 7467 5770 | paddington@winkworth.co.uk

*winkworth.co.uk*

Winkworth wishes to inform prospective buyers and tenants that these particulars are a guide and act as information only. All our details are given in good faith and believed to be correct at the time of printing but they don't form part of an offer or contract. No Winkworth employee has authority to make or give any representation or warranty in relation to this property. All fixtures and fittings, whether fitted or not are deemed removable by the vendor unless stated otherwise and room sizes are measured between internal wall surfaces, including furnishings.

**Winkworth**