



VINCENT STREET, SW1P

£850,000

LEASEHOLD

At a glance...

- c.1054 Square Feet
- 4 Bedrooms
- Communal Gardens
- Small Private Balcony
- Potential to Modernise
- Council Tax Band: F

Winkworth

for every step...



Score	Energy rating	Current	Potential
92+	A		
81-91	B	81 B	83 B
69-80	C		
55-68	D		
39-54	E		
21-38	F		
1-20	G		

VINCENT STREET, SW1P

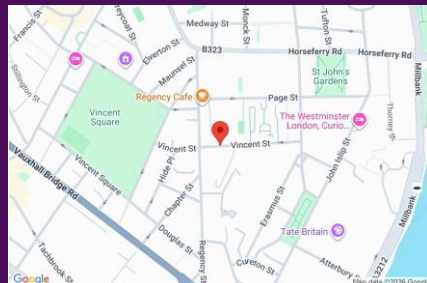
£850,000

LEASEHOLD

Located in an incredible, central London location this flat offers an incredible amount of accommodation over the 2nd and 3rd floors of this well-run block.

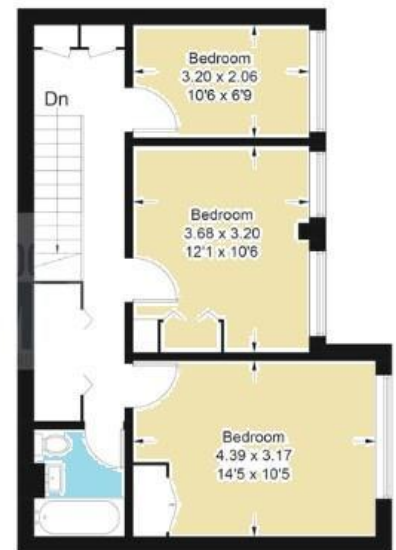
Covering c.1054 sq ft and with the feeling of a small house the property comprises 4 bedrooms, family bathroom, further WC, large eat-in kitchen and a fantastic, bright, reception room.

0.3 miles from Pimlico Underground Station, 0.5 miles from Victoria Street and 0.8 miles to Parliament Square this flat would make a very comfortable family flat in the heart of SW1.



winkworth wishes to inform prospective buyers and tenants that these particulars are a guide and act as information only. All our details are given in good faith and believed to be correct at the time of printing but they don't form part of an offer or contract. No winkworth employee has authority to make or give any representation or warranty in relation to this property. All fixtures and fittings, whether fitted or not are deemed removable by the vendor unless stated otherwise and room sizes are measured between internal wall surfaces, including fireplaces.

Approximate Gross Internal Area = 97.9 sq m / 1054 sq ft



Pimlico & Westminster

020 7828 1786

pimlico@winkworth.co.uk

winkworth.co.uk/pimlico-westminster

Winkworth

for every step...