



DE BEAUVOIR COURT, NORTHCHURCH ROAD, LONDON, N1
OFFERS IN EXCESS OF £365,000 SHARE OF FREEHOLD

A 388 SQ. FT. ONE BEDROOM APARTMENT IN DE BEAUVOIR WITH A SHARE OF THE FREEHOLD

Islington | 0207 354 2480 | islington@winkworth.co.uk

Winkworth



DESCRIPTION:

Positioned on the ground floor of this well-maintained purpose built block is this one-bedroom flat with separate kitchen.

Accommodation includes a kitchen, a master bedroom with fitted wardrobes, bathroom and a spacious reception room flooded with natural light. The property further benefits from a share of the freehold and is offered to the market chain free.

St. Lawrence Court is perfectly set for easy access to Shoreditch and the City and is also surrounded by some great pubs in De Beauvoir alongside delis and cafes on Southgate Road. Regent's canal is just moments away and offers a scenic route to Victoria Park and Maida Vale whilst access to West and East London can be easily facilitated via, Haggerston overground, Dalston Kingsland and Old Street underground.

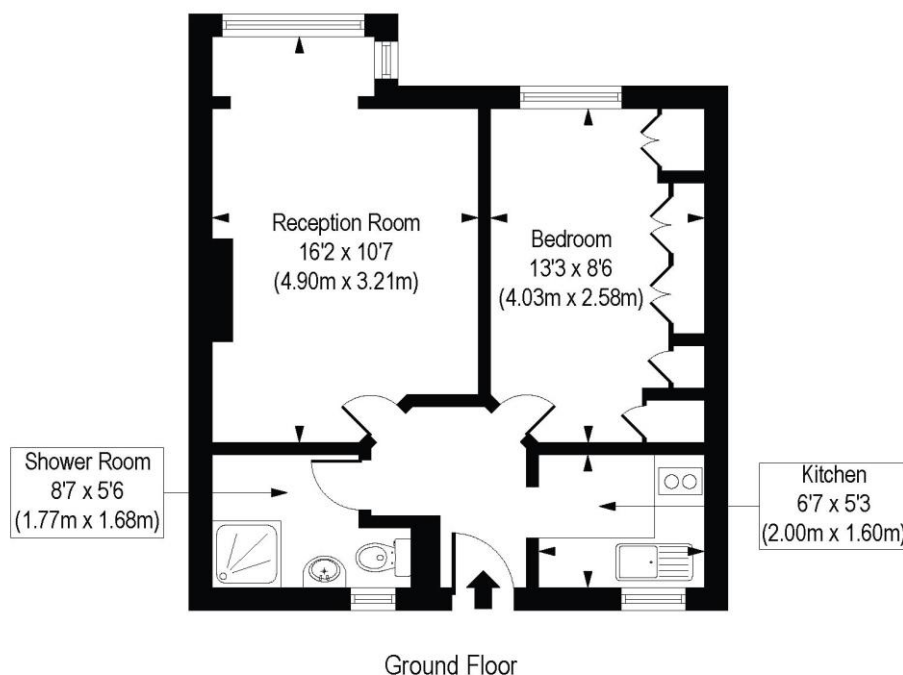
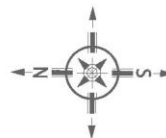
Winkworth



Winkworth

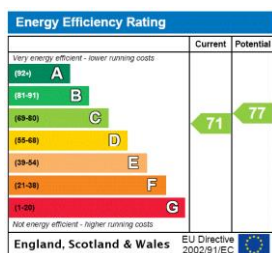
De Beauvoir Court, Northchurch Road, N1

Approx. Gross Internal Floor Area 388 sq. ft / 36.04 sq. m



COMPLIANT WITH RICS CODE OF MEASURING PRACTICE. Floorplan is for illustrative purposes only and is not to scale. Every attempt has been made to ensure the accuracy of the floorplan shown, however all measurements, fixtures, fittings and data shown are an approximate interpretation for illustrative purposes only. Liability for errors, omissions or mis-statement through negligence or otherwise is hereby excluded.

This floorplan is for illustration purposes only and is not to scale. The position and size of doors, windows, appliances and other features are approximate.



<https://www.winkworth.co.uk/sale/property/ISL220228>

Tenure: Share of Freehold

Term: 974 year and 7 months

Service Charge: £8043.56 per annum

Ground Rent: £ 0 Annually (subject to increase)

Council Tax Band: C

Where no figures are shown, we have been unable to ascertain the information. All figures that are shown were correct at the time of printing.

Islington | 0207 354 2480 | islington@winkworth.co.uk

Winkworth

[winkworth.co.uk](https://www.winkworth.co.uk)

See things differently

Winkworth wishes to inform prospective buyers and tenants that these particulars are a guide and act as information only. All our details are given in good faith and believed to be correct at the time of printing but they don't form part of an offer or contract. No Winkworth employee has authority to make or give any representation or warranty in relation to this property. All fixtures and fittings, whether fitted or not are deemed removable by the vendor unless stated otherwise and room sizes are measured between internal wall surfaces, including furnishings.