



**BRECHIN COURT, READING, BERKSHIRE, RG1 5DH**  
**£1,050 PER MONTH UNFURNISHED**

**THIS SPACIOUS ONE BEDROOM GROUND FLOOR APARTMENT IS SET ON A POPULAR TREE-LINED ROAD CLOSE TO READING TOWN CENTRE.**

Reading | 0118 4022 300 | [reading@winkworth.co.uk](mailto:reading@winkworth.co.uk)

**Winkworth**

for every step...

[winkworth.co.uk](http://winkworth.co.uk)





## DESCRIPTION:

This spacious one bedroom ground floor apartment is set on a popular tree-lined road of the East Reading area, within easy reach of the station, The Oracle Shopping complex and local amenities. Accommodation comprises one double bedroom, reception room which opens into the kitchen and a three piece bathroom. Available 2nd September 2025. Unfurnished.

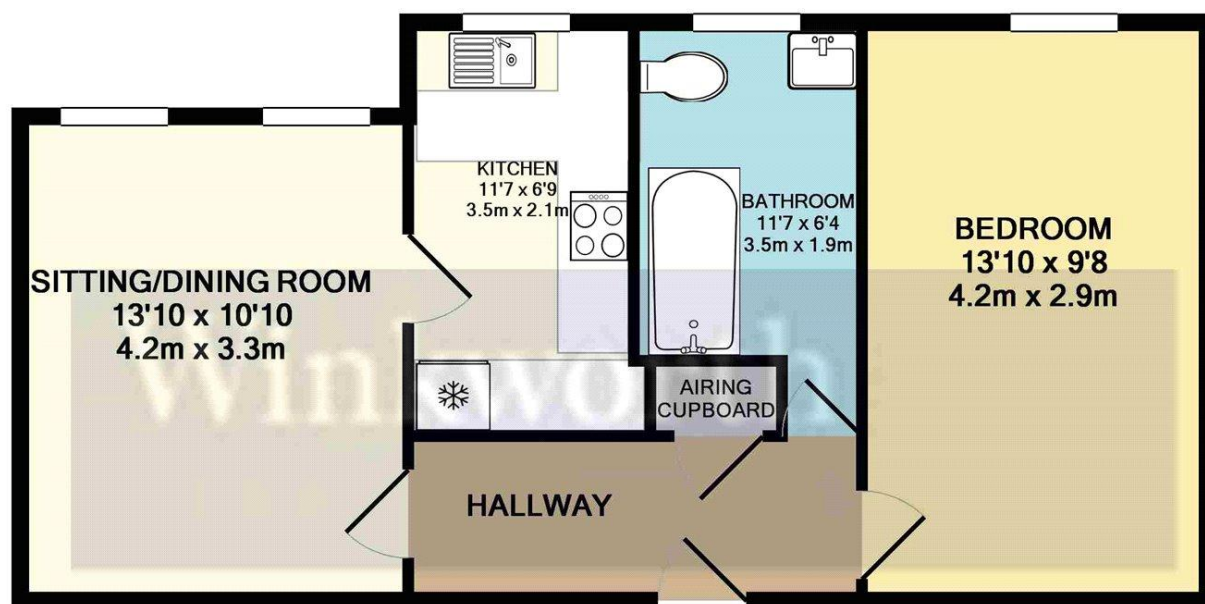
## AT A GLANCE

- Ground Floor Apartment
- One Double Bedroom
- Within Walking Distance of Reading Station
- No Parking
- Council Tax Band B
- Available 2nd September
- Unfurnished









TOTAL APPROX. FLOOR AREA 506 SQ.FT. (47.1 SQ.M.)

Whilst every attempt has been made to ensure the accuracy of the floor plan contained here, measurements of doors, windows, rooms and any other items are approximate and no responsibility is taken for any error, omission, or mis-statement. This plan is for illustrative purposes only and should be used as such by any prospective purchaser. The services, systems and appliances shown have not been tested and no guarantee as to their operability or efficiency can be given

Made with Metropix ©2017

This floorplan is for illustration purposes only and is not to scale. The position and size of doors, windows, appliances and other features are approximate.

**Deposit:** £1,211.54

**Holding Deposit:** £242.30

**Council Tax Band:** B

Where no figures are shown, we have been unable to ascertain the information. All figures that are shown were correct at the time of printing.

Score	Energy rating	Current	Potential
92+	A		
81-91	B		
69-80	C		77 C
55-68	D	60 D	
39-54	E		
21-38	F		
1-20	G		

Reading | 0118 4022 300 | [reading@winkworth.co.uk](mailto:reading@winkworth.co.uk)

**Winkworth**

for every step...

[winkworth.co.uk](http://winkworth.co.uk)

Winkworth wishes to inform prospective buyers and tenants that these particulars are a guide and act as information only. All our details are given in good faith and believed to be correct at the time of printing but they don't form part of an offer or contract. No Winkworth employee has authority to make or give any representation or warranty in relation to this property. All fixtures and fittings, whether fitted or not are deemed removable by the vendor unless stated otherwise and room sizes are measured between internal wall surfaces, including furnishings.