



## Pershore Road

Popley Basingstoke Hampshire RG24 9BG

### Description

A deceptively large one bedroom first floor flat which currently has a tenancy in place.

The hallway offers plenty of storage options and leads to the spacious bedroom, modern kitchen and bathroom and a light airy living/dining room which overlooks the green.

The kitchen has white goods included.

The additional bonus to this property is that it has a private garden and an extra storage cupboard with power.

There is no onward chain.

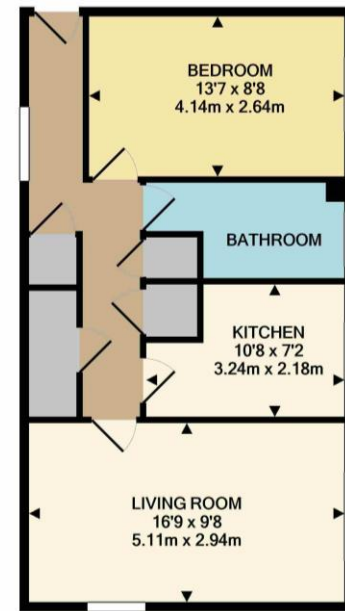
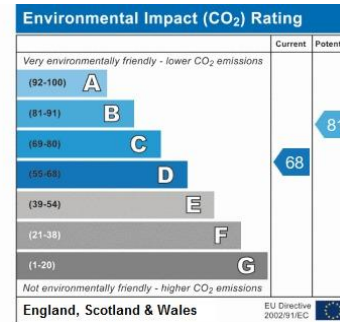
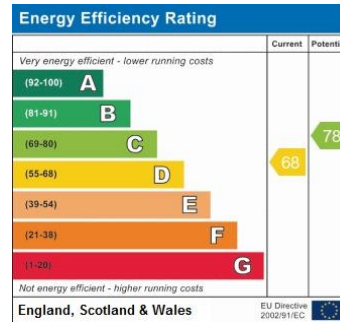


**Winkworth**

## Accommodation

- Spacious 1 bedroom flat
- Modern Kitchen and bathroom
- Gas central heating
- Redecorated throughout
- Private garden
- Leasehold

Lease details – 125 years from July 1989 leaving 91 years remaining. Service charge and ground as supplied by the owner is £14.48 from April 2024 per month.



TOTAL APPROX. FLOOR AREA 514 SQ. FT. (47.7 SQ.M.)

Whilst every attempt has been made to ensure the accuracy of the floor plan contained here, measurements of doors, windows, rooms and any other items are approximate and no responsibility is taken for any error, omission, or mis-statement. This plan is for illustrative purposes only and should be used as such by any prospective purchaser. The services, systems and appliances shown have not been tested and no guarantee as to their operability or efficiency can be given.  
Made with Metropix ©2020



## Basingstoke Office

10B Church Street, Basingstoke, Hampshire, RG21 7QE

01256 811730 | basingstoke@winkworth.co.uk

[winkworth.co.uk/Basingstoke](http://winkworth.co.uk/Basingstoke)

# Winkworth

See things differently.