



**RICHMOUNT GARDENS, BLACKHEATH, LONDON, SE3 9AE**  
**£599,950 FREEHOLD**

**A GOOD SIZED THREE BEDROOM TERRACED HOUSE WITH  
 RARELY AVAILABLE OFF STREET PARKING, SET WITHIN  
 BLACKHEATH'S CATOR ESTATE AND VERY CLOSE TO THE  
 OFSTED "OUTSTANDING" BROOKLANDS PRIMARY SCHOOL.**

**Blackheath | 0208 8520999 | [blackheath@winkworth.co.uk](mailto:blackheath@winkworth.co.uk)**

**Winkworth**

*[winkworth.co.uk](http://winkworth.co.uk)*

See things differently





## DESCRIPTION:

The property is generally in very good decorative order with gas fired central heating and double glazed windows.

The accommodation comprises; to the ground floor a good size living room, a large kitchen with integrated appliances and a separate utility room. There is also a good sized rear garden. Upstairs are three bedrooms, two of which are doubles both with built in wardrobes, the third bedroom is a single bedroom or perfect home office, and finally is the family bathroom.

This is a great home, your earliest viewing is highly recommended. Video tour can be seen at [Winkworth.co.uk](http://Winkworth.co.uk)

Richmount Gardens is a popular cul-de-sac accessed via the prestigious Cator Estate. The Ofsted outstanding Brooklands Primary School is within a few minutes' walk. The house is located just 0.2 miles from Kidbrooke Station and just 0.9 miles to Blackheath Village with its array of bars, restaurants, boutique shops and mainline station. Sutcliff Park, the heath and Greenwich Park are all within a short walk.

## AT A GLANCE

- modern house
- three bedrooms
- excellent condition
- large garden
- kitchen diner
- off street parking
- sought after location
- close to station
- close to schools



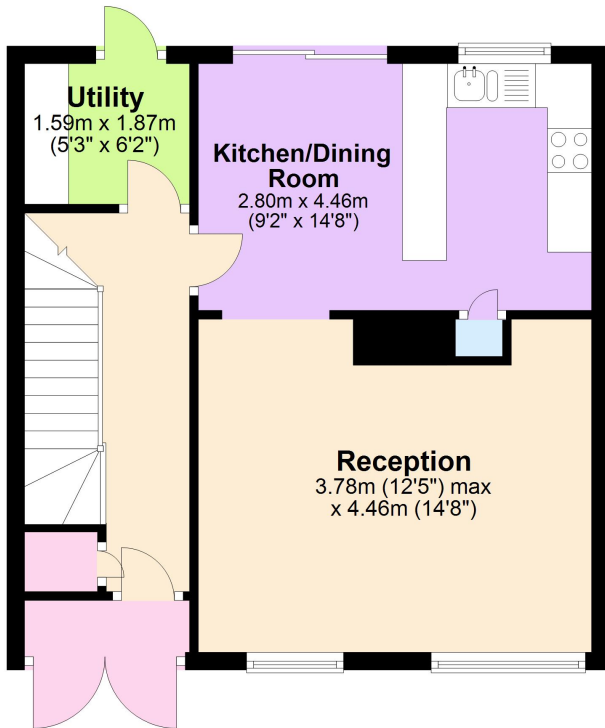






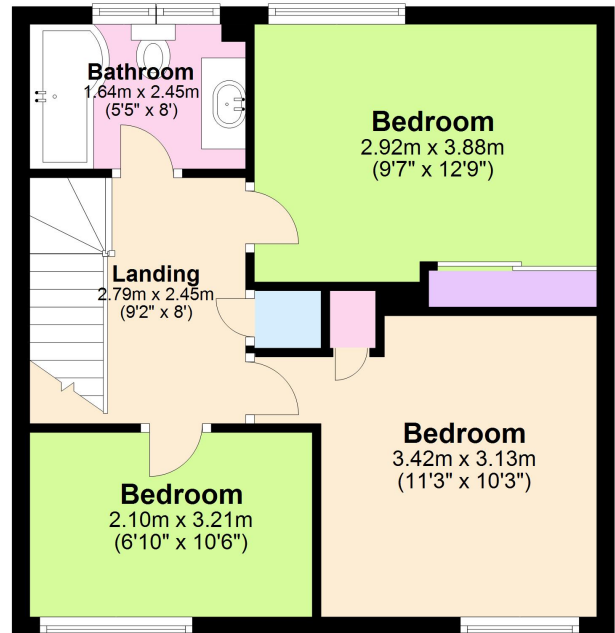
## Ground Floor

Approx. 43.0 sq. metres (462.5 sq. feet)



## First Floor

Approx. 43.0 sq. metres (463.3 sq. feet)



Total area: approx. 86.0 sq. metres (925.9 sq. feet)

This floorplan is for illustration purposes only and is not to scale. The position and size of doors, windows, appliances and other features are approximate. Any lease and service charge details have been provided by the vendor. Any interest party should have these checked by a solicitor as part of the purchase process.

Blackheath | 0208 8520999 | blackheath@winkworth.co.uk

**Winkworth**

*winkworth.co.uk*

See things differently

Winkworth wishes to inform prospective buyers and tenants that these particulars are a guide and act as information only. All our details are given in good faith and believed to be correct at the time of printing but they don't form part of an offer or contract. No Winkworth employee has authority to make or give any representation or warranty in relation to this property. All fixtures and fittings, whether fitted or not are deemed removable by the vendor unless stated otherwise and room sizes are measured between internal wall surfaces, including furnishings.