



Blackburn Court, London, SW2

Offers IEO £375,000 *Leasehold*



KEY FEATURES

- Purpose built
- Luxury gated development
- Semi-open plan reception
- Juliet balcony
- Double bedroom
- Bathroom
- Chain free
- Brockwell Gate

Nestled within Brockwell Gate, a gated development with direct access to Brockwell Park, this spacious one-bedroom first-floor apartment offers bright, comfortable living moments from the wide green expanses of Brockwell Park.

The apartment opens into a welcoming hallway fitted with two handy storage cupboards. From here, you enter the generous semi open-plan kitchen and reception room — a beautifully bright space that invites you to relax or entertain. French doors lead onto a west-facing Juliet balcony, perfect for catching afternoon light and enjoying leafy views across the development. The fully fitted kitchen blends seamlessly into

the living area, providing practical counter space and integrated appliances, ideal for modern living.

To the rear, the sizeable double bedroom features a large fitted wardrobe and offers a peaceful retreat with plenty of natural light. A modern bathroom, finished with neutral tones, includes a bath with shower overhead and a WC. Further benefits include double glazing throughout and the added appeal of being sold chain-free.

This well-presented apartment would make an excellent first home or a smart investment purchase, offering privacy and a quiet community feel while remaining close to the lively atmosphere and transport links

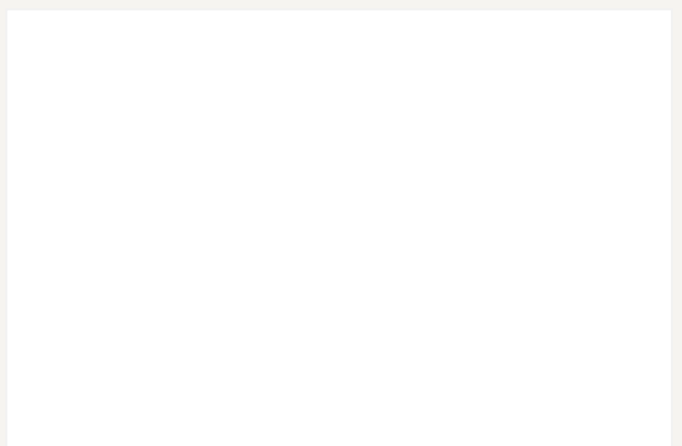
Herne Hill

0207 501 8950 | hernehill@winkworth.co.uk

Winkworth

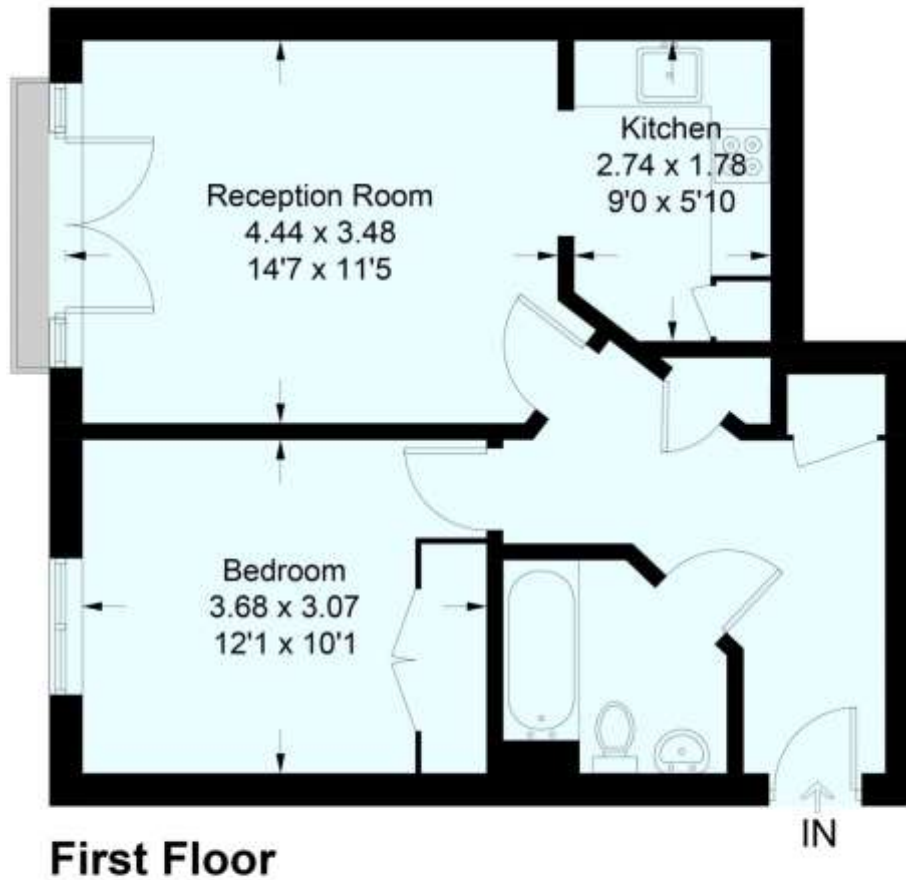
for every step...



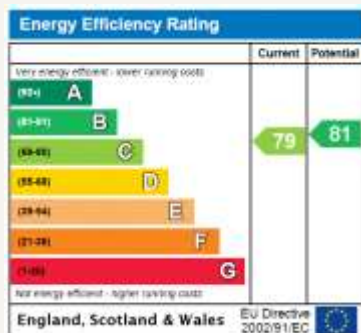


Blackburn Court, Bascombe Road, SW2

Approximate Gross Internal Area
46.6 sq m / 502 sq ft



This plan is for layout guidance only. Not drawn to scale unless stated. Windows and door openings are approximate. Whilst every care is taken in the preparation of this plan, please check all dimensions, shapes and compass bearings before making any decisions reliant upon them. (ID481778)



MATERIAL INFO

Tenure: Leasehold

Term: 99 year and 6 months

Service Charge: £3000 per annum

Ground Rent: £208 Annually (subject to increase)

Council Tax Band: B

EPC rating: C

Herne Hill

0207 501 8950 | hernehill@winkworth.co.uk

Winkworth

for every step...

Winkworth wishes to inform prospective buyers and tenants that these particulars are a guide and act as information only. All our details are given in good faith and believed to be correct at the time of printing but they don't form part of an offer or contract. No Winkworth employee has authority to make or give any representation or warranty in relation to this property. All fixtures and fittings, whether fitted or not are deemed removable by the vendor unless stated otherwise and room sizes are measured between internal wall surfaces, including furnishings.