

Winkworth

Ringford Road, Putney, SW18 1RP



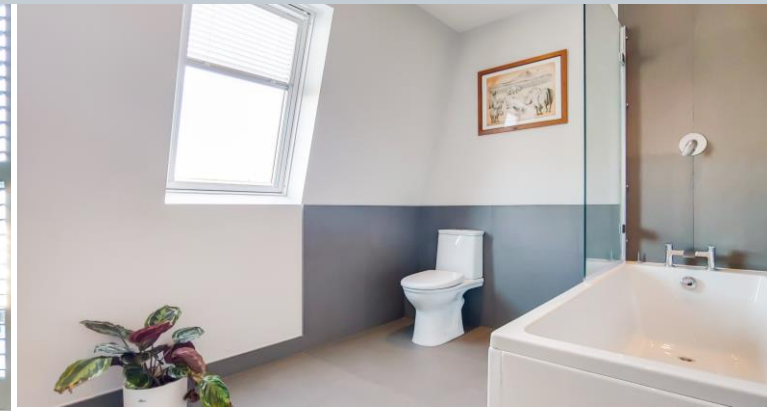


A stunning Victorian property based over three floors and comprising over 1,300 sq. ft. Presented in immaculate condition throughout, this wonderful home benefits from its own front door leading into a spacious entrance hall. A superb double reception room has high ceilings and a lovely bay window providing plenty of natural light. A separate fitted kitchen is beautifully finished and provides ample work surfaces. Just off the first half landing is a sizeable and low-maintenance private roof terrace. On the upper floors, two enormous double bedrooms are serviced by two equally impressive bathrooms, one of which is an en-suite. On the top floor, sliding doors open onto a small balcony area with views over London rooftops.

Ringford Road is a quiet residential road well located for access to Putney, Southfields and central Wandsworth, with East Putney and Southfields Underground stations (District Line), Putney and Wandsworth Town mainline (into Clapham Junction and Waterloo) all providing excellent transport links into London. Furthermore, there are plenty of shops, bars and restaurants within easy reach as well as some outstanding local schools.

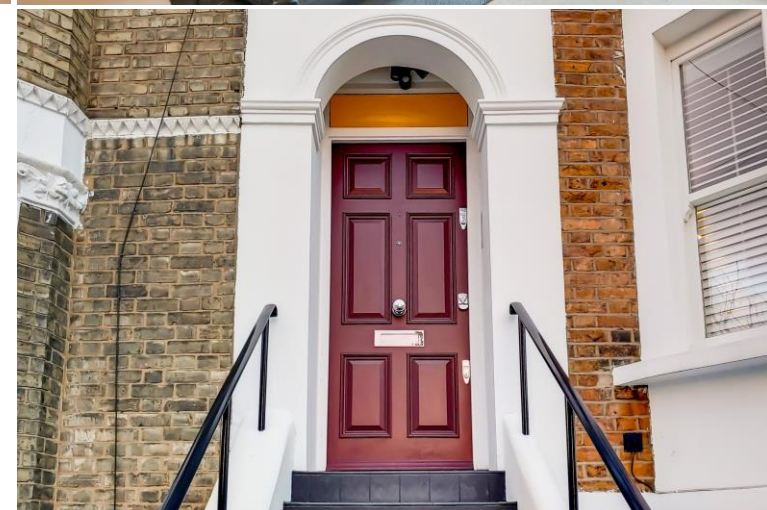
- PERIOD PROPERTY
- DOUBLE RECEPTION ROOM
- SEPARATE KITCHEN
- PRIVATE ROOF TERRACE
- TWO DOUBLE BEDROOMS
- TWO BATHROOMS
- POPULAR LOCATION
- SHARE OF FREEHOLD
- 1,337 SQ. FT.

Ringford Road, Putney, SW18 1RP



Share of Freehold

Internal area
Approximate gross internal area:
Total 1,337 sq ft/ 124 sq m



Ringford Road, Putney, SW18 1RP

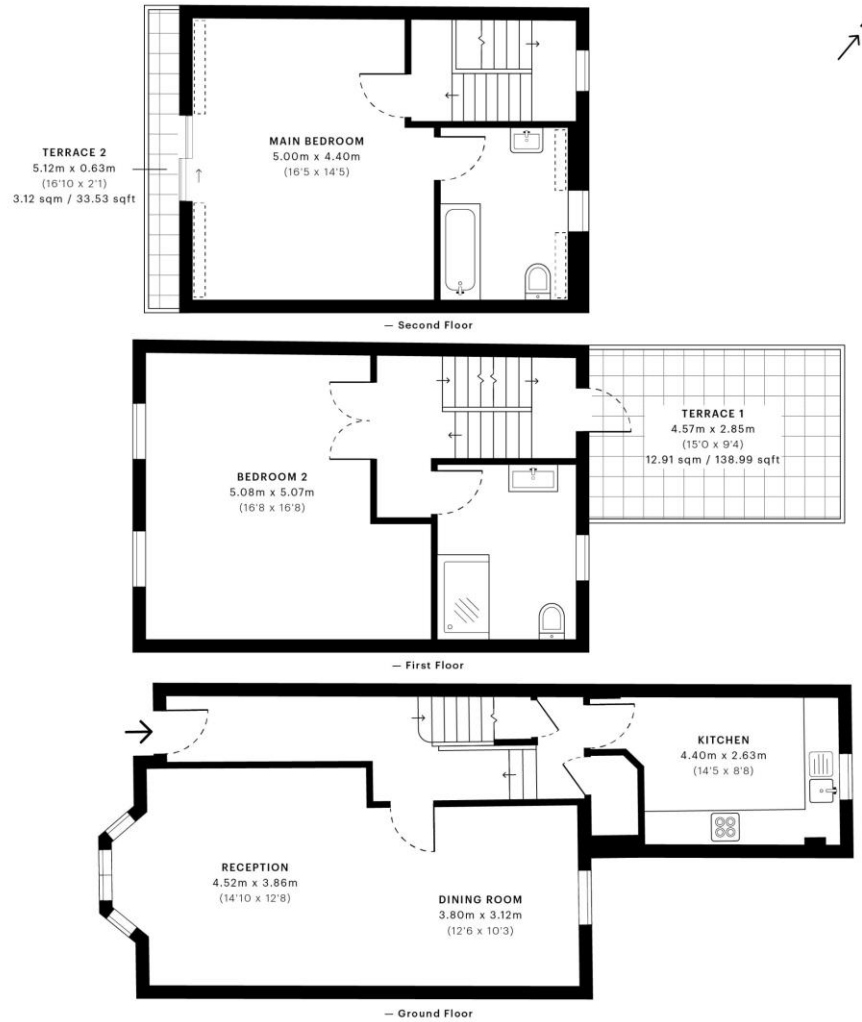
Winkworth

Ringford Road, SW18

CAPTURE DATE 24/01/2021 LASER SCAN POINTS 3,622,767

GROSS INTERNAL AREA

124.24 sqm / 1337.31 sqft



W621 Ravensworth 01670 713330

Winkworth

Under the Property Misdescriptions Act these particulars are intended as a guide and act as information only. They give a fair overall description for the guidance of potential purchasers or tenants but do not constitute an offer or part of a contract. All details and approximate measurements are given in good faith and are believed to be correct at the time of printing, but any potential purchasers or tenants should not rely on the mis-statements or representations of fact but must satisfy themselves by inspection or otherwise as to their correctness. No employee of Winkworth has authority to make or give any representation or warranty to this property.

Southfields office 241 Wimbledon Park Road, London SW18 5RJ | Tel: 0208 877 1000 | E-mail: Southfields@winkworth.co.uk
winkworth.co.uk