

PROSPECT QUAY, LONDON, SW18  
**£2,200 PER MONTH UNFURNISHED**

**A two bedroom flat boasting views of the River Thames situated within this small, luxury development**

Putney | 020 8877 1000 | southfields@winkworth.co.uk

**Winkworth**

for every step...

*winkworth.co.uk*





### DESCRIPTION:

The property has a large reception with doors leading to a private, West-facing balcony. The bedrooms are both a good size with fitted wardrobes. Of particular note is the master bedroom with its own luxury ensuite.

Prospect Quay is a prestigious, gated, development positioned on a riverside corner of Wandsworth Park with direct access to its scenic riverside walking/running/cycling paths.

The development benefits from a communal lawn, swimming pool, gym, secure underground parking, and a building manager.

Transport links are excellent; the apartment is perfectly situated (100m) for the Thames Clipper river-boat service (35-minute journey to the City). Putney Bridge and East Putney tube stations, plus Putney and Wandsworth Town rail stations, are all a short 15-minute walk away. In addition to Putney town centre (15min walk), there are many excellent restaurants and amenities on and around Point Pleasant.





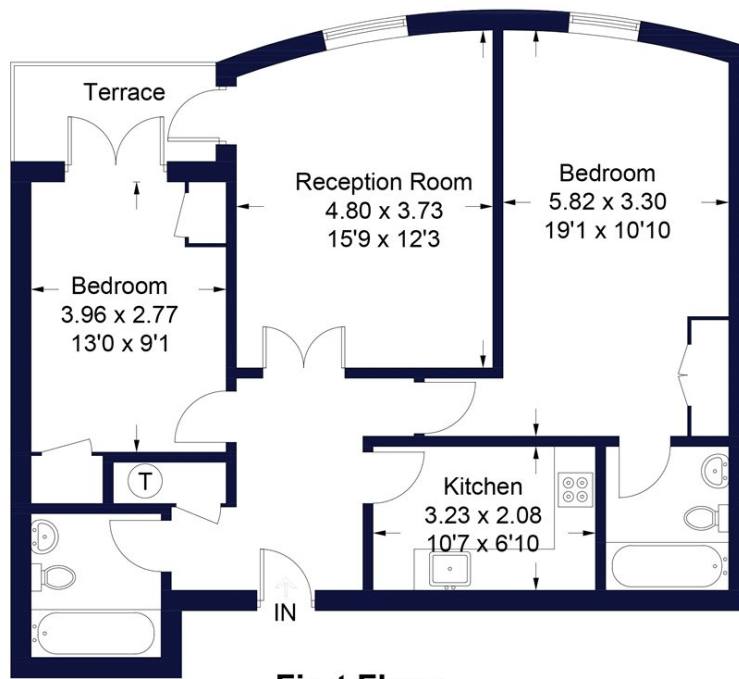




## Prospect Quay

Approximate Gross Internal Area = 77.8 sq m / 837 sq ft

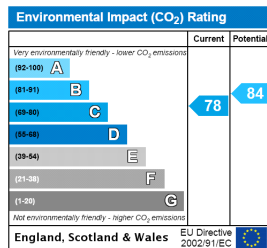
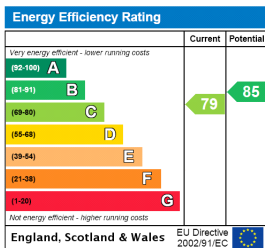
Winkworth



### First Floor

Illustration for identification purposes only, measurements are approximate, not to scale. FloorplansUsketch.com © 2016 (ID297295)

This floorplan is for illustration purposes only and is not to scale. The position and size of doors, windows, appliances and other features are approximate.



Southfields | 020 8877 1000 | southfields@winkworth.co.uk

Winkworth

for every step...

winkworth.co.uk

Winkworth wishes to inform prospective buyers and tenants that these particulars are a guide and act as information only. All our details are given in good faith and believed to be correct at the time of printing but they don't form part of an offer or contract. No Winkworth employee has authority to make or give any representation or warranty in relation to this property. All fixtures and fittings, whether fitted or not are deemed removable by the vendor unless stated otherwise and room sizes are measured between internal wall surfaces, including furnishings.