



EXMOUTH MARKET, EC1R
£550,000 LEASEHOLD

Winkworth



EXMOUTH MARKET, EC1R

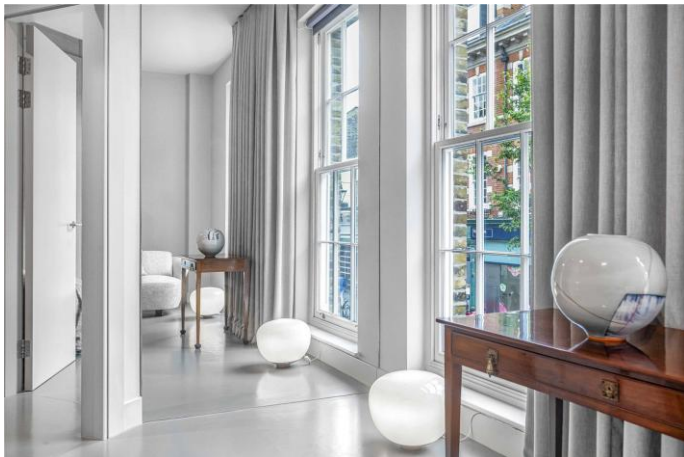
This immaculate one-bedroom apartment built in 2014 is situated on the first floor of a Georgian-style building on Exmouth Market.

The owners have created a minimal aesthetic internally, working with sleek surfaces, bespoke storage solutions and concealed kitchen equipment to maximise space.

A bright communal stairwell leads from the vibrant Exmouth Market. The internal layout is arranged in two halves, to separate the living and sleeping quarters. The modern apartment has been meticulously considered and makes excellent use of space. High ceilings feature throughout, while tall triple glazed windows with electric blinds welcome copious amounts of natural light into the south-facing living room/kitchen.

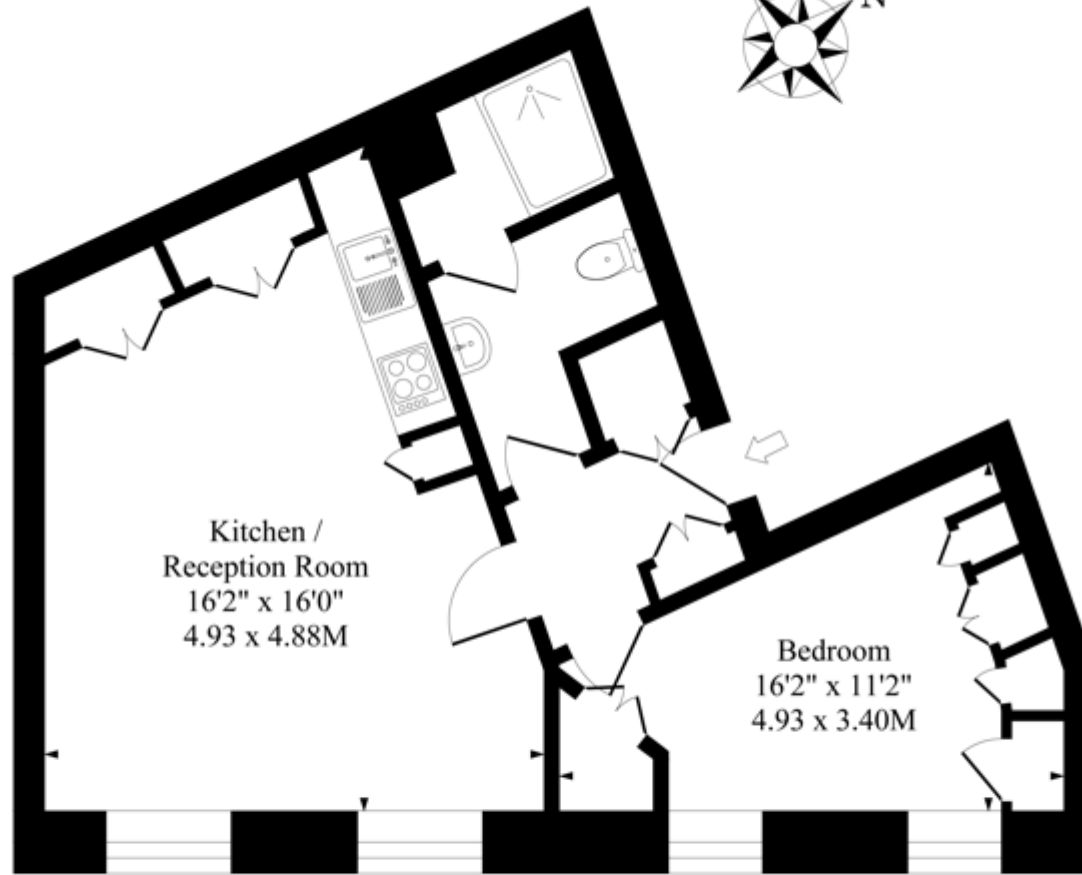
The bedroom is characterised by tall windows that look out over Exmouth Market, ensuring natural light abounds. Floor-to-ceiling wardrobes with pull-down rails arch over the ottoman bed space. The attention to detail continues in the immaculate bathroom, which has deep storage for large items above the shower.

Leasehold: Approx. 115 years remaining
Service Charge: Approx. £2,750 per annum
Ground Rent: Approx. £250 per annum
Council Tax: Band E





Exmouth Market Ec1



First Floor

Approximate Gross Internal Area 527 Sq Ft - 48.95 Sq M

Measured in according with RICS guidelines. Every attempt is made to ensure accuracy
However all measurements are approximate.
The floor plan is illustrative purposes only and is not to scale

Clerkenwell & City | 020 7405 1288 | clerkenwell@winkworth.co.uk

winkworth.co.uk

Winkworth wishes to inform prospective buyers and tenants that these particulars are a guide and act as information only. All our details are given in good faith and believed to be correct at the time of printing but they don't form part of an offer or contract. No Winkworth employee has authority to make or give any representation or warranty in relation to this property. All fixtures and fittings, whether fitted or not are deemed removable by the vendor unless stated otherwise and room sizes are measured between internal wall surfaces, including furnishings.

