

Grove House, London, SW3
£699,999 *LEASEHOLD*

2  1  1 



Winkworth Knightsbridge & Chelsea
020 7589 6616 | knightsbridge@winkworth.co.uk

Winkworth

for every step...

Beautiful 2-bedroom ground floor flat in a prime location

ABOUT THIS FLAT

A charming and well-presented two-bedroom ground floor apartment set within a handsome period purpose-built block in the heart of Chelsea. This well-laid-out home offers a warm and inviting atmosphere, benefiting from generous natural light throughout and thoughtfully arranged living space. The property features two bedrooms, a bright reception room, and a modern bathroom complete with a shower. Its cozy yet spacious feel makes it an ideal home for those seeking comfort and character in a prime location. Situated just moments from the iconic King's Road, the location is truly exceptional - offering immediate access to a wide array of boutiques, cafés, restaurants, and excellent transport links, all while enjoying a quiet residential setting.

KEY FEATURES

- 2 bedrooms
- 1 reception room
- 1 bathrooms
- 1,977 Square Feet
- Period











FINER DETAILS

- 2 bedrooms
- 1 reception room
- 1 bathrooms
- 1,977 Square Feet
- Period

Score	Energy rating	Current	Potential
92+	A		
81-91	B		
69-80	C	75 C	80 C
55-68	D		
39-54	E		
21-38	F		
1-20	G		

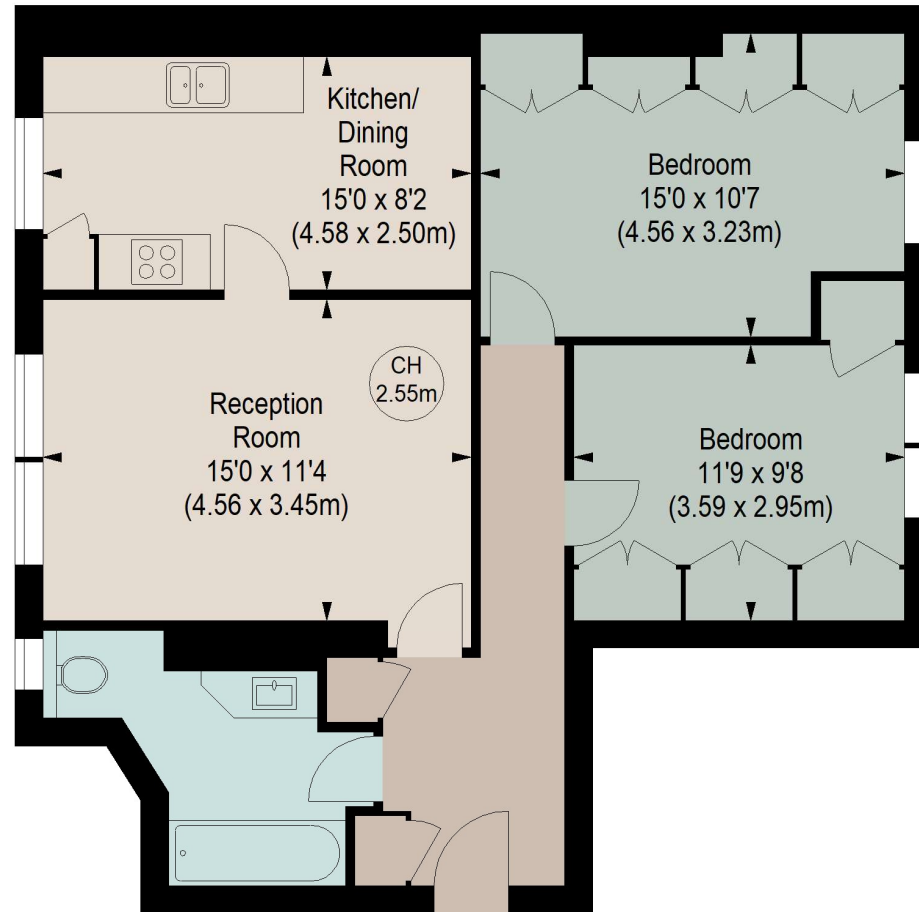
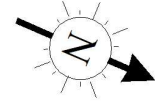
GROVE HOUSE, SW3

Approximate gross internal area

762 sq ft / 70.79 sq m

Key :

CH - Ceiling Height



GROUND FLOOR

Although every attempt has been made to ensure accuracy, all measurements are approximate.
This floorplan is for illustrative purposes only and not to scale.
Measured in accordance with RICS standards.



Winkworth Knightsbridge & Chelsea
020 7589 6616 | knightsbridge@winkworth.co.uk

Winkworth

for every step...