



MELROSE AVENUE, WILLESDEN GREEN, LONDON, NW2
£1,950 PER MONTH PART FURNISHED

SPACIOUS TWO BEDROOM FIRST FLOOR FLAT LOCATED CLOSE TO WILLESDEN GREEN

Kensal Rise & Queens Park | 0208 960 4947 | kensalrise@winkworth.co.uk

Winkworth

for every step...

winkworth.co.uk



DESCRIPTION:

Set on the first floor of a Victorian converted building this apartment comprises of two double bedrooms on slightly different levels, wooden flooring in the hallway, and a fully tiled bathroom with bath over shower.

The reception room is bright and airy and will be re-decorated between tenancies. A few steps lead you down to the separate fitted 'L' shape kitchen which is fitted with all modern appliances.

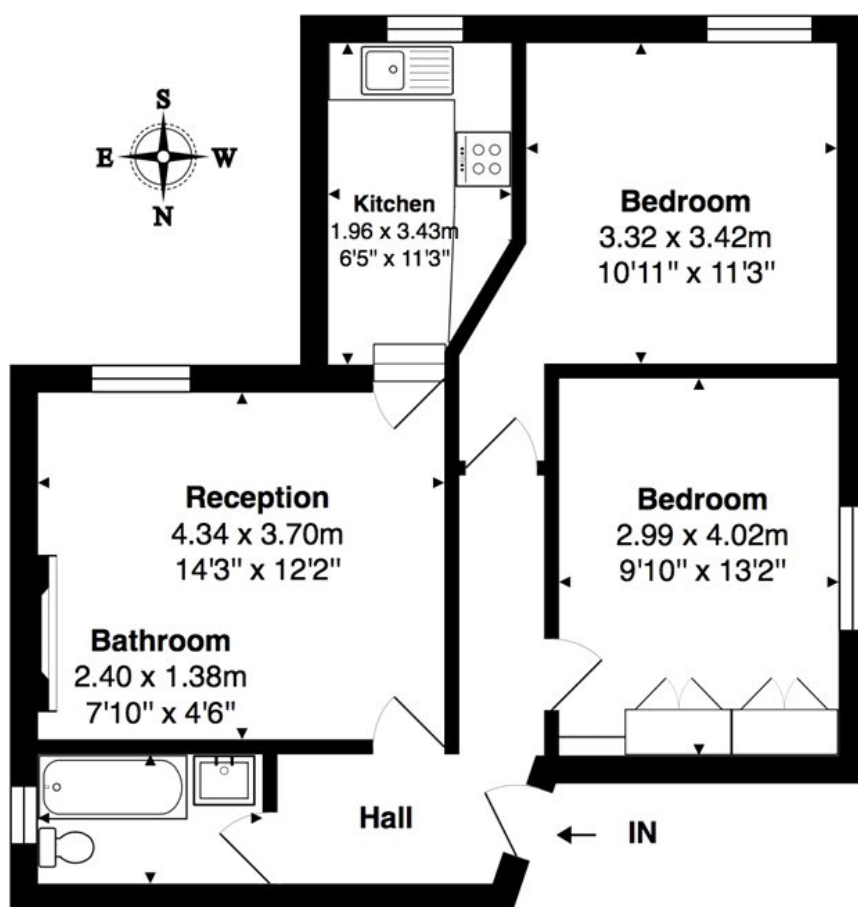
This property is offered part furnished and available in August 2025

Managed By Winkworth

Council tax - (Band D)

Ward - Mapesbury

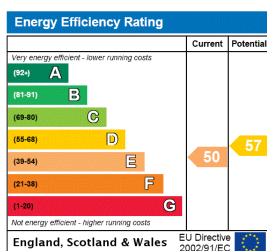




Total Area: 60.3 m² ... 650 ft²

All measurements are approximate and for display purposes only

This floorplan is for illustration purposes only and is not to scale. The position and size of doors, windows, appliances and other features are approximate.



Deposit: 5 weeks rent

Holding Deposit: 1 weeks rent

Council Tax Band: D

Where no figures are shown, we have been unable to ascertain the information. All figures that are shown were correct at the time of printing.

Winkworth

Kensal Rise & Queens Park | 0208 960 4947 | kensalrise@winkworth.co.uk

for every step...

winkworth.co.uk

Winkworth wishes to inform prospective buyers and tenants that these particulars are a guide and act as information only. All our details are given in good faith and believed to be correct at the time of printing but they don't form part of an offer or contract. No Winkworth employee has authority to make or give any representation or warranty in relation to this property. All fixtures and fittings, whether fitted or not are deemed removable by the vendor unless stated otherwise and room sizes are measured between internal wall surfaces, including furnishings.