



CHURCHILL GARDENS, SW1V

£500,000

LEASEHOLD

At a glance...

- Two Double Bedrooms
- Large, Bright Reception Room
- Raised Ground Floor
- Balcony
- Excellent Condition
- Council Tax Band: C

Winkworth

for every step...



EPC Pending

CHURCHILL GARDENS, SW1V

£500,000

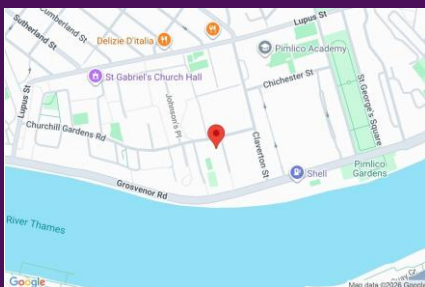
LEASEHOLD

An excellent apartment on the raised ground floor of Keats House, Churchill Gardens with heating and hot water costs included in the service charges.

The flat offers some 687 square feet and has a very pleasant layout, feel and outlook over green communal space.

Briefly the accommodation incorporates two double bedrooms, separate kitchen with access to the fabulous balcony and bathroom. The flat has smart wooden floors throughout and the owner has replaced the kitchen and bathroom in their ownership giving the feel of a very modern home and negating the need for an incoming purchaser to carry out any immediate works.

Located within a short walk of Pimlico underground station and the amenities of Lupus Street this flat would make a lovely, central London home or super convenient pied-a-terre.

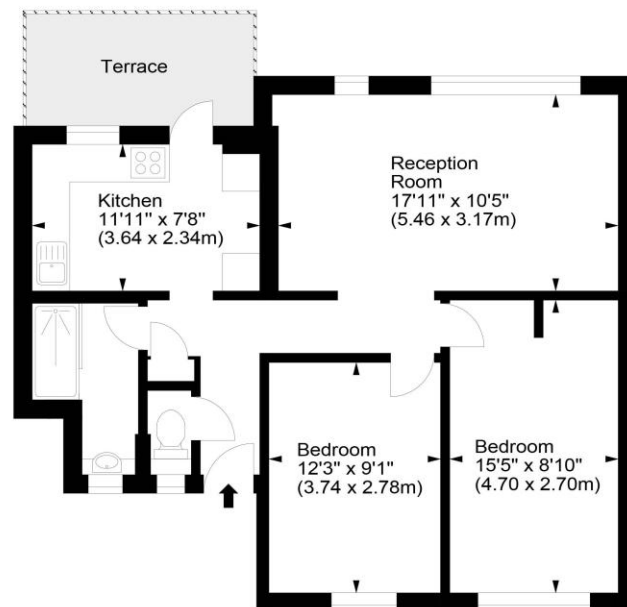


winkworth wishes to inform prospective buyers and tenants that these particulars are a guide and act as information only. All our details are given in good faith and believed to be correct at the time of printing but they don't form part of an offer or contract. No winkworth employee has authority to make or give any representation or warranty in relation to this property. All fixtures and fittings, whether fitted or not are deemed removable by the vendor unless stated otherwise and room sizes are measured between internal wall surfaces including built-in cupboards.

Keats House, Churchill Gardens, SW1



Approx. Gross Internal Area
687 Sq Ft - 63.82 Sq M



Ground Floor

For illustration purposes only. Not to scale.
All measurements are taken and shown at floor level.
www.r3photography.co.uk © Photography / Floor Plans / Lease Plans / EPCs

Winkworth

Pimlico & Westminster

020 7828 1786

pimlico@winkworth.co.uk

winkworth.co.uk/pimlico-westminster

Winkworth

for every step...