



HILL RISE COURT, PARK RISE, LEATHERHEAD, KT22
£1,550 PER MONTH FURNISHED, UNFURNISHED

DESCRIPTION:

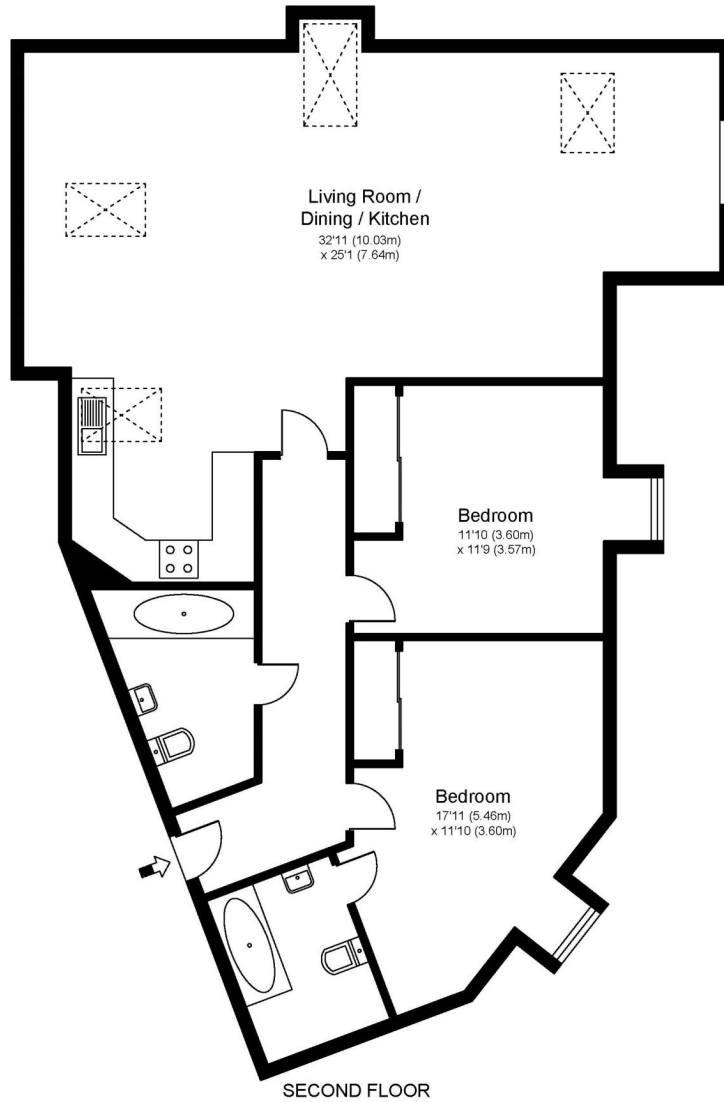
A fabulously sized, modern, bright and airy penthouse apartment within an attractive, well-maintained block in central Leatherhead. The apartment is accessed via a security entry phone system. A solid wood front door leads into spacious hallway with doors to all rooms leading from it. The lounge/dining room is bright and spacious, the kitchen is fully fitted with matching, light, modern units and integrated appliances. The master bedroom has an en-suite shower room which has a walk-in shower cubicle, WC and wash hand

Weybridge | 01932 854400 | weybridge@winkworth.co.uk



for every step...

HILL RISE COURT, PARK RISE, KT22



Approximate Gross Internal Floor Area: 102 m sq / 1102 sq ft

Whilst every attempt has been made to ensure the accuracy of the floor plan contained here, measurements of doors, windows and rooms are approximate and no responsibility is taken for any error, omission or misstatements. These plans are not to scale and are for representation purposes only as defined by RICS Code of Measuring Practice and should be used as such by any prospective purchaser. Specifically no guarantee is given on total square footage of the property if quoted on this plan. Any figure given is for initial guidance only and should not be relied on as a basis of valuation.

This floorplan is for illustration purposes only and is not to scale. The position and size of doors, windows, appliances and other features are approximate.

Energy Efficiency Rating		Current	Potential
Very energy efficient - lower running costs			
(92-)	A		
(81-91)	B		
(69-80)	C	76	81
(55-68)	D		
(39-54)	E		
(21-38)	F		
(1-20)	G		
Not energy efficient - higher running costs			
England, Scotland & Wales		EU Directive 2002/91/EC	

Deposit: £1,788.46

Council Tax Band: D

Where no figures are shown, we have been unable to ascertain the information. All figures that are shown were correct at the time of printing.

Weybridge | 01932 854400 | weybridge@winkworth.co.uk

Winkworth

for every step...

winkworth.co.uk

Winkworth wishes to inform prospective buyers and tenants that these particulars are a guide and act as information only. All our details are given in good faith and believed to be correct at the time of printing but they don't form part of an offer or contract. No Winkworth employee has authority to make or give any representation or warranty in relation to this property. All fixtures and fittings, whether fitted or not are deemed removable by the vendor unless stated otherwise and room sizes are measured between internal wall surfaces, including furnishings.