

Lavender Court, Binfield Road, London, SW4

£260,000 Leasehold

A wonderful opportunity to acquire a one-bedroom, unmodernised well-proportioned purpose built flat in Stockwell. EPC rating C

LOCATION

Lavender Court is located on Binfield Road. A quiet road hidden between Clapham Road and Larkhall Park. Stockwell Station is a stones throw away with direct access to the Victoria and Northern Line.

DESCRIPTION

The flat consists of a double bedroom, reception room, separate kitchen and a bathroom. The flat is in needs of full renovation throughout but has lots of potential.

The bedroom is a generous size, suitable for a double bed with space for free standing furniture.

The reception is a good size and can easily accommodate a small dining table, sofa and any other furniture you wish to add.

The kitchen is well proportioned and has plenty of cupboard and worktop space. You will find spaces for utilities and a fridge.

The bathroom houses a bather with overhead shower, sink and W.C

SERVICE CHARGE, GROUND RENT, COUNCIL TAX

Service Charge - £2,551 per annum

Ground Rent - Nil

Council Tax Band - B

UTILITIES

Electricity – mains connected

Gas – mains connected

Water – mains connected

Heating –gascentral heating

Sewerage – mains connected

Broadband - Ultrafast Full Fibre Broadband

LOCAL AUTHORITY

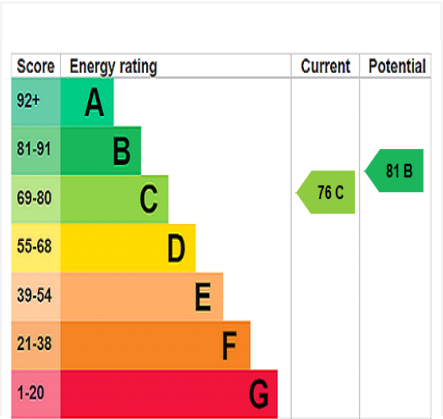
Lambeth

TENURE

Leasehold – a new 125 year lease

DIRECTIONS

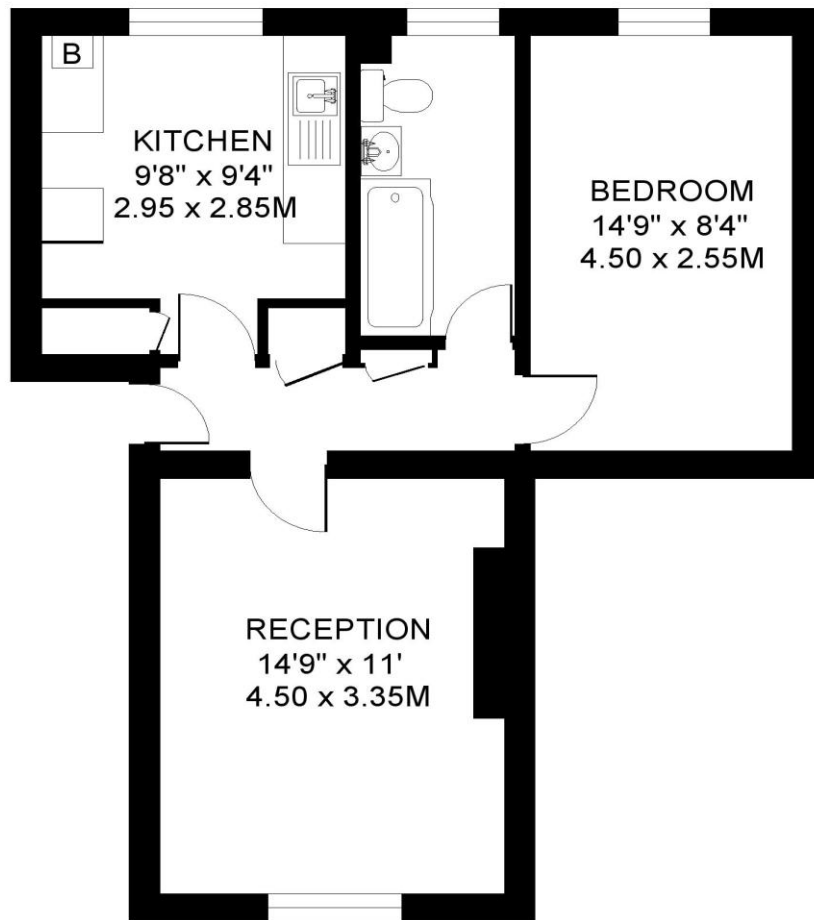
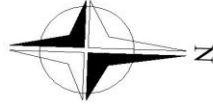
Stockwell station is 0.1 miles away. Clapham North and Clapham High Street is 0.7 miles away. The area is well served with frequent bus services into the city.





LAVENDER COURT. SW4
1 BEDROOM FLAT

Approximate gross floor area
514 SQ.FT / 47.8 SQ.M.



SECOND FLOOR

Copyright: These plans should not be reproduced by any other person, without permission.
Floorplan produced for Winkworth by Floorplanners 07801 228850

This floorplan is for illustration purposes only and is not to scale. The position and size of doors, windows, appliances and other features are approximate.

Kennington | 020 7587 0600 | kennington@winkworth.co.uk