

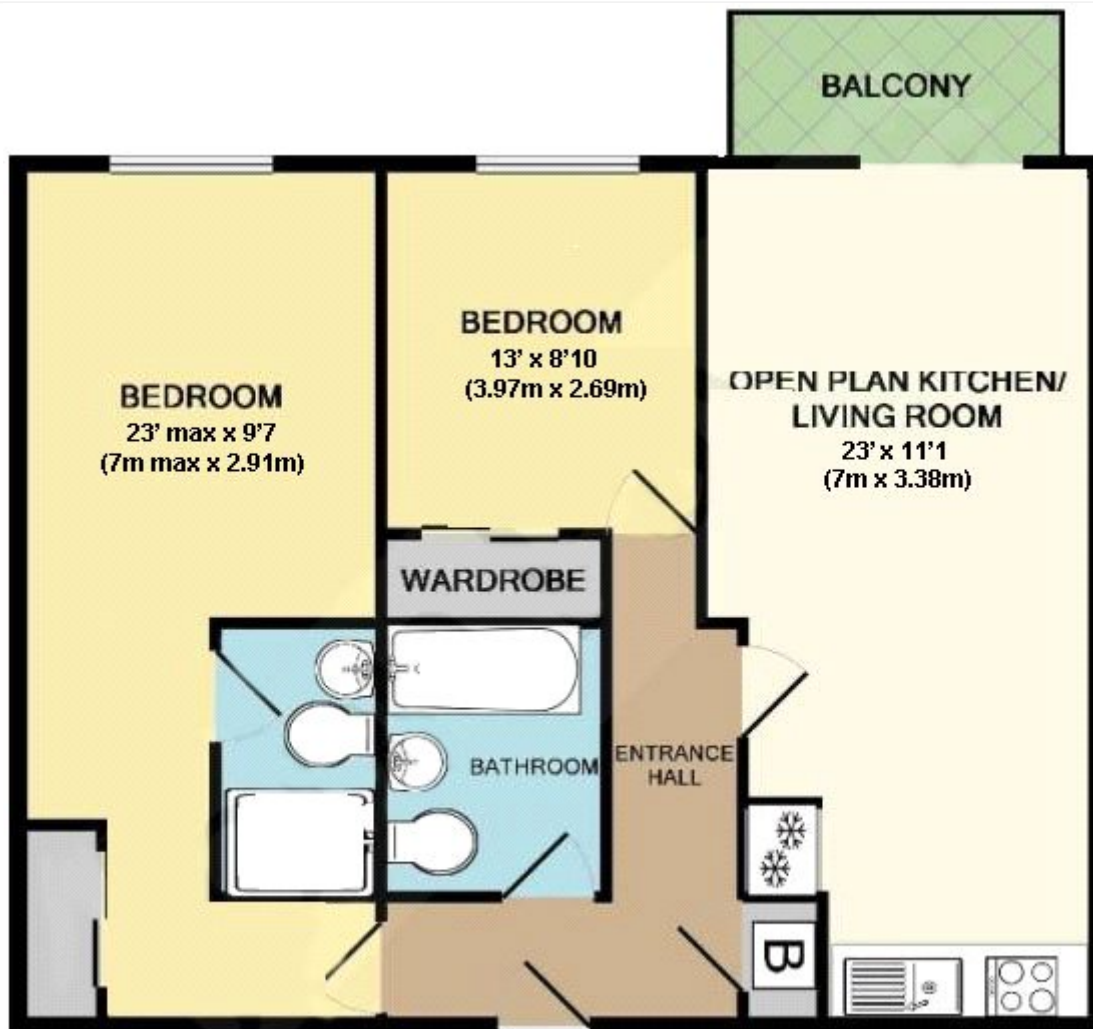


COLORADO BUILDING, LEWISHAM, LONDON, SE13
£2,000 PER MONTH UNFURNISHED

DESCRIPTION:

Perfectly located within easy reach of Deptford DLR, this stylish two bedroom apartment offers contemporary living in a vibrant location. Offered unfurnished, and available from 6th October 2025.

Blackheath | 0208 8520999 | blackheath@winkworth.co.uk



Total Approx, Floor Area 680 sq.ft (63.2 sq.m)

This floorplan is for illustration purposes only and is not to scale. The position and size of doors, windows, appliances and other features are approximate.

Score	Energy rating	Current	Potential
92+	A		
81-91	B		
69-80	C	78 C	84 B
55-68	D		
39-54	E		
21-38	F		
1-20	G		

Deposit: £2,307.69

Holding Deposit:

Council Tax Band:

Where no figures are shown, we have been unable to ascertain the information.
All figures that are shown were correct at the time of printing.