



FAIRFIELDS CLOSE, LONDON, NW9
£635,000 FREEHOLD

4 BEDROOM SEMI DETACHED HOME IN A PRIME YET PEACEFUL RESIDENCE

Kingsbury | 020 8204 0000 | kingsbury@winkworth.co.uk

Winkworth

winkworth.co.uk

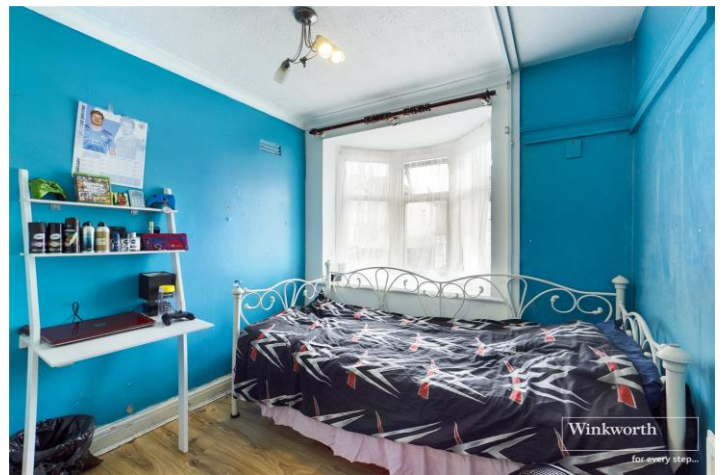
See things differently



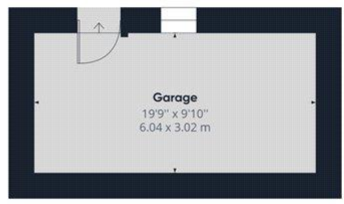
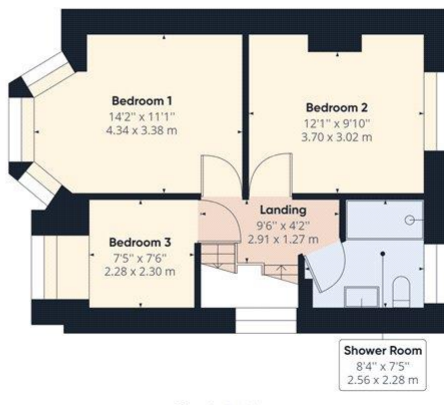
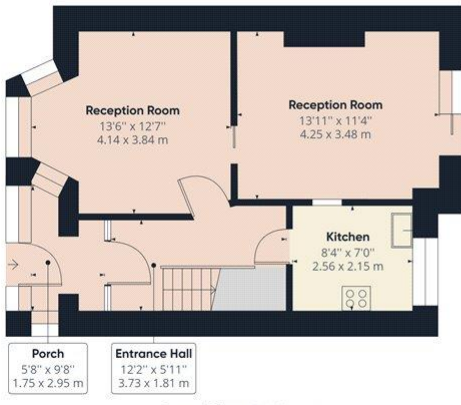
DESCRIPTION: Winkworth are delighted to bring to the market this 4 bedroom, semi-detached family home situated in a prime yet peaceful location. The ground floor comprises of two attractive, bright, and ample reception rooms allowing an abundance of family living space split over two rooms, and a simplistic kitchen. The first floor accommodates three lovingly maintained bedrooms, all benefiting from space saving integrated storage, and a modern family shower room. Moving into the loft, we are greeted with an appealing master bedroom, complete with a stylish en suite. Externally, the rear garden has the space and potential to be turned into a stunning outdoor living space, and also benefits from a garage. There is further scope to extend to the rear of the property (STPP) and off street parking for 2 cars to the front of the property. This is a beautiful blank canvas for a growing family looking for their forever home. An internal viewing is advised.



Winkworth



Winkworth



Approximate total area⁽¹⁾
 1390.03 ft²
 129.14 m²

Reduced headroom
 36.24 ft²
 3.37 m²

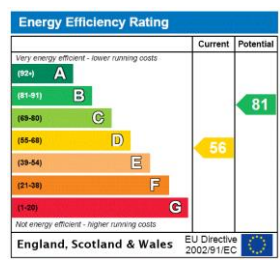
(1) Excluding balconies and terraces

Reduced headroom (below 1.5m/4.92ft)

While every attempt has been made to ensure accuracy, all measurements are approximate, not to scale. This floor plan is for illustrative purposes only.

GIRAFFE360

This floorplan is for illustration purposes only and is not to scale. The position and size of doors, windows, appliances and other features are approximate.



Kingsbury | 020 8204 0000 | kingsbury@winkworth.co.uk



winkworth.co.uk

See things differently

Winkworth wishes to inform prospective buyers and tenants that these particulars are a guide and act as information only. All our details are given in good faith and believed to be correct at the time of printing but they don't form part of an offer or contract. No Winkworth employee has authority to make or give any representation or warranty in relation to this property. All fixtures and fittings, whether fitted or not are deemed removable by the vendor unless stated otherwise and room sizes are measured between internal wall surfaces, including furnishings.