



ALMOND CLOSE, PECKHAM, SE15
OIEO £550,000 FREEHOLD

A GREAT OPPORTUNITY TO PURCHASE A
THREE-BEDROOM RECENTLY REFURBISHED
TERRACED HOME IN PECKHAM.

Dulwich | 020 8299 2722 | dulwich@winkworth.co.uk

Winkworth

winkworth.co.uk

See things differently



DESCRIPTION:

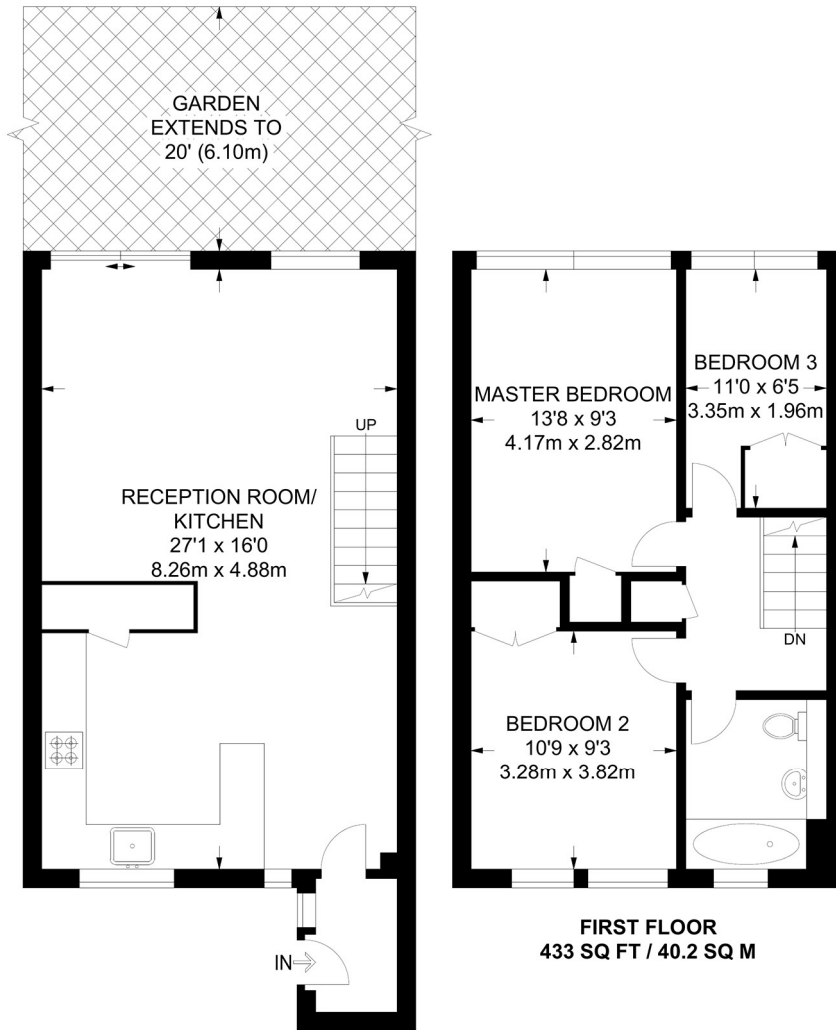
A great opportunity to purchase a three-bedroom terraced home in Peckham. The property boasts a spacious open-plan kitchen reception on the ground floor, comprising wood flooring, a fully fitted kitchen with integrated appliances, all finished to an impressive standard. The kitchen leads to the reception with sliding doors that lead out on to a spacious private garden to rear. The first floor comprises two spacious double bedrooms, and a further smaller third bedroom. The family bathroom has been recently refurbished to a high standard. The location offers fantastic access to Peckham Rye and Rye Lane, with their impressive array of independent shops, bars and restaurants. Transport links are available from Peckham Rye or Queens Road, both with extensive links in to most, major London terminals.

AT A GLANCE

- Three Bedrooms
- Terrace House
- Open Plan Kitchen-Reception
- Modern Bathroom
- Front & Rear Garden
- Recently Refurbished
- Central Location





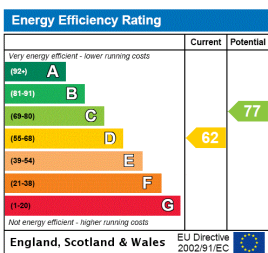


GROUND FLOOR
457 SQ FT / 42.5 SQ M

FIRST FLOOR
433 SQ FT / 40.2 SQ M

APPROXIMATE GROSS INTERNAL AREA
890 SQ FT / 82.7 SQ M

This floorplan is for illustration purposes only and is not to scale. The position and size of doors, windows, appliances and other features are approximate.



Dulwich | 020 8299 2722 | dulwich@winkworth.co.uk



winkworth.co.uk

See things differently

Winkworth wishes to inform prospective buyers and tenants that these particulars are a guide and act as information only. All our details are given in good faith and believed to be correct at the time of printing but they don't form part of an offer or contract. No Winkworth employee has authority to make or give any representation or warranty in relation to this property. All fixtures and fittings, whether fitted or not are deemed removable by the vendor unless stated otherwise and room sizes are measured between internal wall surfaces, including furnishings.