



PUTNEY HIGH STREET, SW15
£1,900 PER MONTH FURNISHED

A wonderfully bright and spacious one bedroom flat with river views in the heart of Putney. Extending to nearly 650 sq ft this flat is presented in immaculate order throughout. Benefitting from a modern kitchen and bathroom it boasts a large reception room and generous double bedroom with built-in wardrobes. It is situated on the top floor of the building allowing for an abundance of natural light and beautiful views of the river and St Mary's Church. The property is perfectly located for all the amenities and transport links Putney has to offer. There are a plethora of bars, restaurants and shops on the High Street and Lower Richmond Road. Putney Mainline and Putney Bridge Tube Stations are a short walk away, as is the river and green open spaces of Bishops Park.

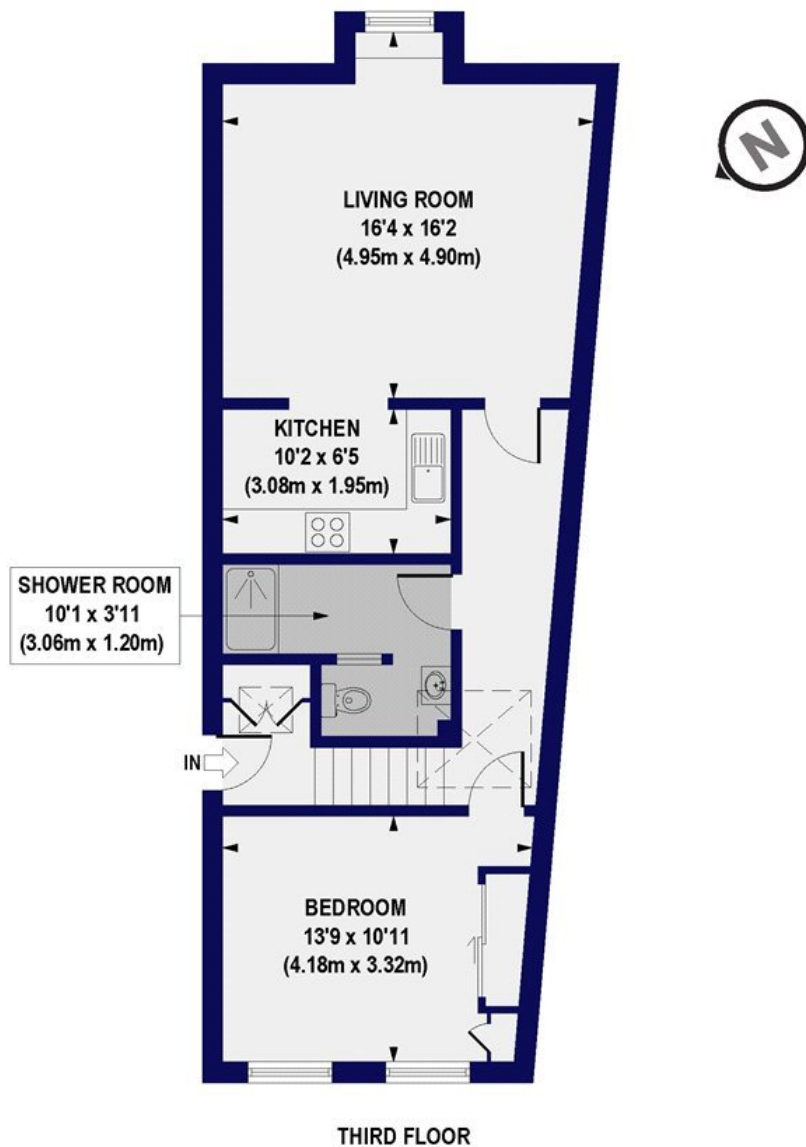
Putney | 020 8877 1000 | putney@winkworth.co.uk

Winkworth

for every step...

winkworth.co.uk

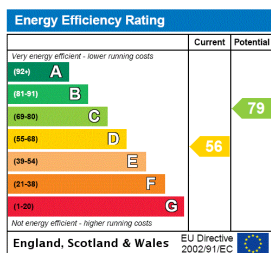
Putney High Street, SW15
Approx. Gross Internal Floor Area 648 sq. ft / 60.25 sq. m



All measurements of walls, doors, windows, fittings and appliances, including their size and location, are shown as standard sizes and do not constitute any warranty or representation by the seller, their agent or CP Creative. Any intending purchaser must satisfy himself by inspection or otherwise as to the correctness of the information contained in these plans. This plan is for illustrative purposes only and should be used as such by any prospective purchasers.

Winkworth

This floorplan is for illustration purposes only and is not to scale. The position and size of doors, windows, appliances and other features are approximate.



Deposit: £0.00

Holding Deposit:

Council Tax Band:

Where no figures are shown, we have been unable to ascertain the information. All figures that are shown were correct at the time of printing.

Putney | 020 8877 1000 | putney@winkworth.co.uk

Winkworth

for every step...

winkworth.co.uk

Winkworth wishes to inform prospective buyers and tenants that these particulars are a guide and act as information only. All our details are given in good faith and believed to be correct at the time of printing but they don't form part of an offer or contract. No Winkworth employee has authority to make or give any representation or warranty in relation to this property. All fixtures and fittings, whether fitted or not are deemed removable by the vendor unless stated otherwise and room sizes are measured between internal wall surfaces, including furnishings.