



WILLOW VALE, LONDON, W12

£675,000 FREEHOLD

A THREE-BEDROOM FAMILY HOME WITH NO ONWARD CHAIN NOW SEEKING CREATIVE IMAGINATIVE OWNERS TO SPRINKLE A LITTLE MAGIC AND REJUVENATE THIS PRETTY EDWARDIAN COTTAGE

Shepherds Bush | 020 8735 3266 | shepherdsbush@winkworth.co.uk

Winkworth

A member of  **OnTheMarket**.com

winkworth.co.uk/shepheras-bush

See things differently

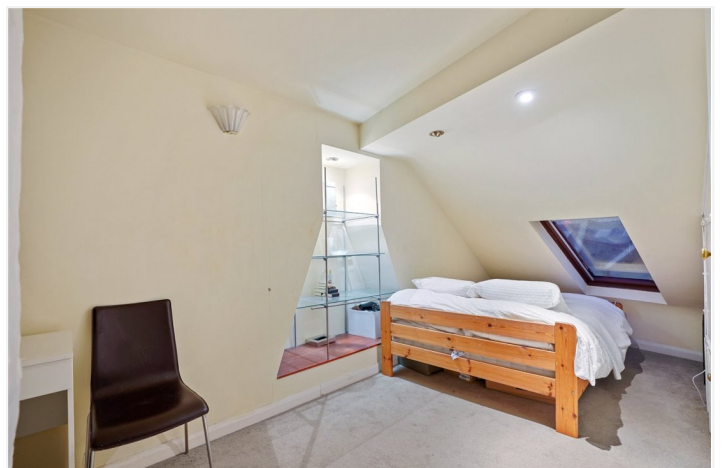


DESCRIPTION:

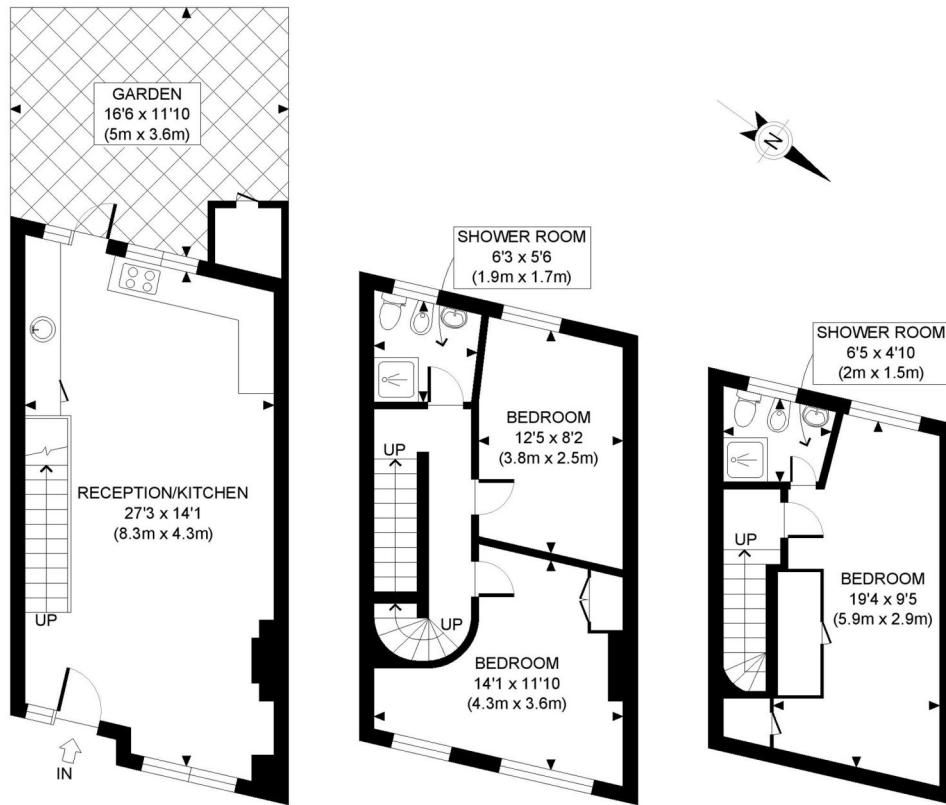
Willow vale is one of Shepherd Bush's better kept secrets. A no-through road tucked away in the heart of the Groves it is a quiet, calm enclave. On one side of the road are Edwardian houses, on the other period purpose-built maisonettes. Our example has an open plan ground floor with an Aga in pride of place and access to a private west facing patio garden. To the first floor are two good size double bedrooms and a bathroom whilst in the extended loft space is a substantial third bedroom and en suite. The house is now rather dated but has good bones and offers over 970 square feet of very usable space. A great opportunity for those who fancy a project but don't really want to build. A drop of imagination in tandem with some fairy dust and this could be a wonderful family home. No onward chain.

LOCATION:

Willow Vale is a quiet cul de sac in the ever popular 'Groves' area of Shepherds Bush. It is in close proximity to a cornucopia of independent restaurants and bars. Well thought of schools are nearby as are the superb public transport links of W12. The Westfield Shopping complex is dangerously close. Quiet yet close to the action.







GROUND FLOOR
GROSS INTERNAL
FLOOR AREA 385 SQ FT

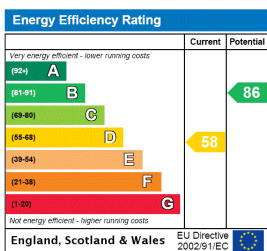
FIRST FLOOR
GROSS INTERNAL
FLOOR AREA 350 SQ FT

SECOND FLOOR
GROSS INTERNAL
FLOOR AREA 243 SQ FT

APPROX. GROSS INTERNAL FLOOR AREA: 978 SQ FT/ 91 SQM

PROPERTY PHOTO PLANS.co.uk
ONE STOP SHOP FOR PROPERTY MARKETING

Whilst every attempt has been made to ensure the accuracy of the floor plan contained here, measurements of the doors, windows, rooms and any other items are approximate and no responsibility is taken for any errors, omissions, or miss-statement. This plan is for illustrative purposes only and should be used as such by any prospective client. The services, systems and appliances shown have not been tested and no guarantee as to the operability or efficiency can be given.



Shepherds Bush | 020 8735 3266 | shepherdsbush@winkworth.co.uk



winkworth.co.uk/sheperas-bush

See things differently.

Winkworth wishes to inform prospective buyers and tenants that these particulars are a guide and act as information only. All our details are given in good faith and believed to be correct at the time of printing but they don't form part of an offer or contract. No Winkworth employee has authority to make or give any representation or warranty in relation to this property. All fixtures and fittings, whether fitted or not are deemed removable by the vendor unless stated otherwise and room sizes are measured between internal wall surfaces, including furnishings.