

# PARK MANSIONS | SW1X



Winkworth

# Park Mansions SW1X

RENT: £1675pw / £7258.33pcm

- Two Bedrooms
- Two Bathrooms
- Upper floor flat (with lift)
- Furnished
- Resident Parking

LOCAL AUTHORITY: Royal Borough of Kensington & Chelsea

COUNCIL TAX BAND: Band G



Energy Efficiency Rating		
	Current	Potential
Very energy efficient - lower running costs		
(92+) <b>A</b>		
(81-91) <b>B</b>		<b>81</b>
(69-80) <b>C</b>		
(55-68) <b>D</b>	<b>67</b>	
(39-54) <b>E</b>		
(21-38) <b>F</b>		
(1-20) <b>G</b>		
Not energy efficient - higher running costs		
<b>England, Scotland &amp; Wales</b>	EU Directive 2002/91/EC	

Knightsbridge & Chelsea | 020 7589 6616  
knightsbridge@winkworth.co.uk



for every step...

[winkworth.co.uk](http://winkworth.co.uk)

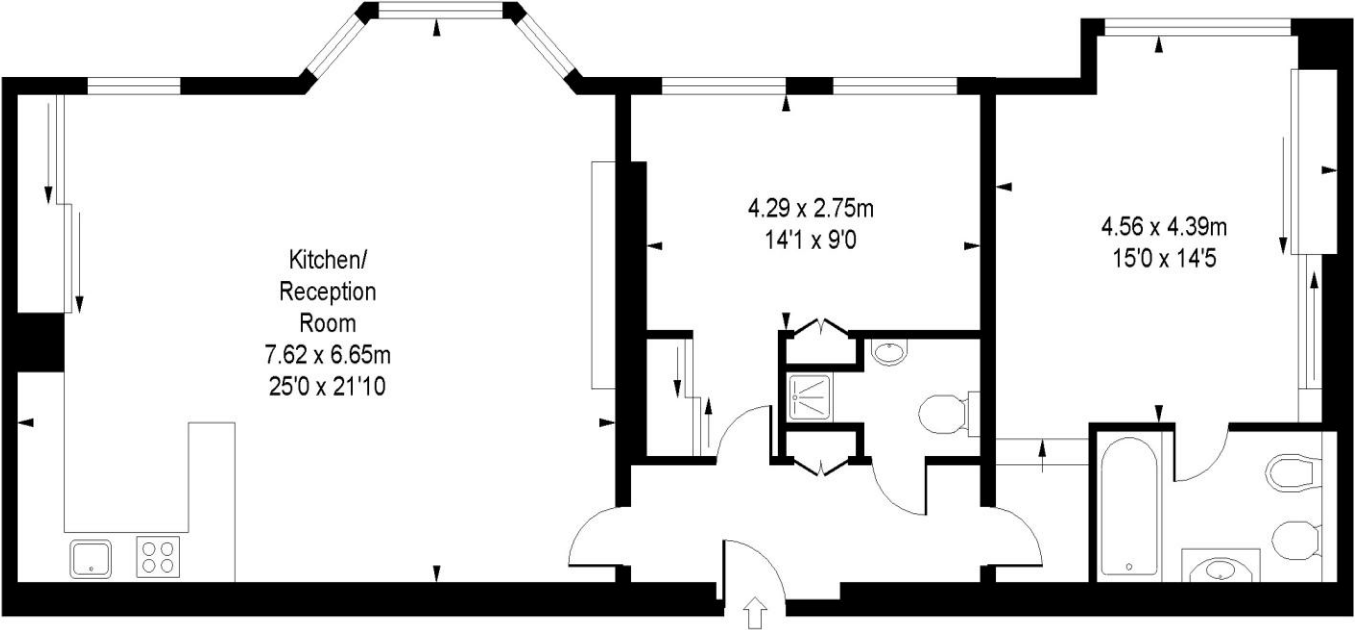
Winkworth wishes to inform prospective buyers and tenants that these particulars are a guide and act as information only. All our details are given in good faith and believed to be correct at the time of printing but they don't form part of an offer or contract. No Winkworth employee has authority to make or give any representation or warranty in relation to this property. All fixtures and fittings, whether fitted or not are deemed removable by the vendor unless stated otherwise and room sizes are measured between internal wall surfaces, including furnishings.





Park Mansions, SW1X 7QS

Approximate Gross Internal Area  
1112 sq ft / 103.30 sq m



Fourth Floor

ILLUSTRATION FOR IDENTIFICATION PURPOSES ONLY

ALL MEASUREMENTS ARE MAXIMUM, AND INCLUDE WINDOW BAYS AND WARDROBES WHERE APPLICABLE  
THIS PLAN MUST NOT BE REPRODUCED BY ANY OTHER PERSON WITHOUT PERMISSION