



SALMON STREET, KINGSBURY, LONDON, NW9

OFFERS IN EXCESS OF £1,300,000 FREEHOLD

CHAIN FREE STUNNING EXTENDED FOUR BEDROOM SEMI DETACHED HOUSE

Kingsbury | 020 8204 0000 | kingsbury@winkworth.co.uk

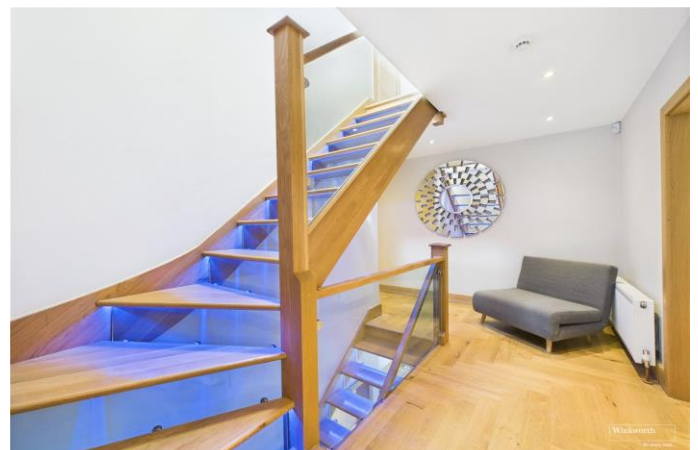
Winkworth

for every step...

winkworth.co.uk



Situated on the sought-after Salmon Street, this beautifully extended turnkey home spans an impressive 2,834 sqft and offers generous, versatile living space perfect for family life. Benefiting from a double-storey side extension, rear extension, and a loft conversion, the property is arranged over three floors and finished to a high standard throughout, including the comfort of underfloor heating and air conditioning. The ground floor comprises a welcoming reception room, a dedicated office, and a spacious open-plan kitchen/dining area. A sleek guest W/C and separate utility room complete this level. On the first floor, you'll find three well-proportioned bedrooms, one hosting an attractive en suite, private balcony access perfect for morning coffee or evening sunsets. The bathroom boasts a high spec finish with a luxurious jacuzzi bath and media system with a sauna/ steam room, offering a retreat for relaxation and wellness. The loft has been thoughtfully converted to create two bedrooms with a well-appointed bathroom, providing privacy and comfort. Externally, the property enjoys an approx. 60ft rear garden leading to a substantial outbuilding. This versatile space offers endless possibilities for use—currently featuring a bar and a climate-controlled wine room, making it ideal for entertaining or creating a personalised leisure area. This is a rare opportunity to acquire a pristine family home on one of the area's most prestigious streets, combining space, style, and indulgent lifestyle features in an exceptional setting. Must be seen to be appreciated.

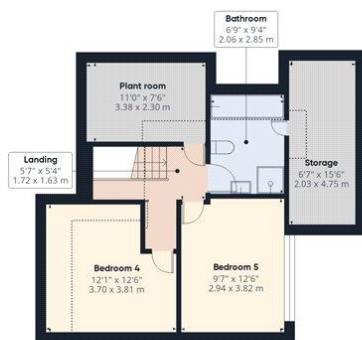


Winkworth

for every step...



Winkworth
for every step...



Winkworth wishes to inform prospective buyers and tenants that these particulars are a guide and act as information only. All our details are given in good faith and believed to be correct at the time of printing but they don't form part of an offer or contract. No Winkworth employee has authority to make or give any representation or warranty in relation to this property. All fixtures and fittings, whether fitted or not are deemed removable by the vendor unless stated otherwise and room sizes are measured between internal wall surfaces, including furnishes.