



CITYVIEW, CHARLTON, LONDON, SE7

GUIDE PRICE £350,000 - £370,000 SHARE OF FREEHOLD

WE ARE DELIGHTED TO OFFER THIS SUPER ONE BEDROOM APARTMENT THAT MEASURES CIRCA 861 SQUARE FOOT AND IS PRESENTED IN EXCELLENT DECORATIVE ORDER.

Greenwich | 02030533033 | greenwich@winkworth.co.uk



DESCRIPTION:

Guide Price £350,000 - £370,000 We are delighted to offer this super one bedroom apartment that measures circa 861 square foot and is presented in excellent decorative order.

Found on the ground floor this huge flat is larger than most two bedroom properties, and also features off street parking. The accommodation comprises of a good sized entrance hallway, which has excellent storage. The living room measure 25ft and has a well fitted modern open plan kitchen, along with hard wood flooring. The large double bedroom is 15ft square. The property also has a lovely modern bathroom with added shower cubicle.

Cityview is a stunning and completely unique development located just off Carleton Village, and can be accessed via security gates. Along with local shops, Charlton mainline rail is just a short walk away, as is a new Sainsbury and Marks and Spencer. There is no chain.

AT A GLANCE

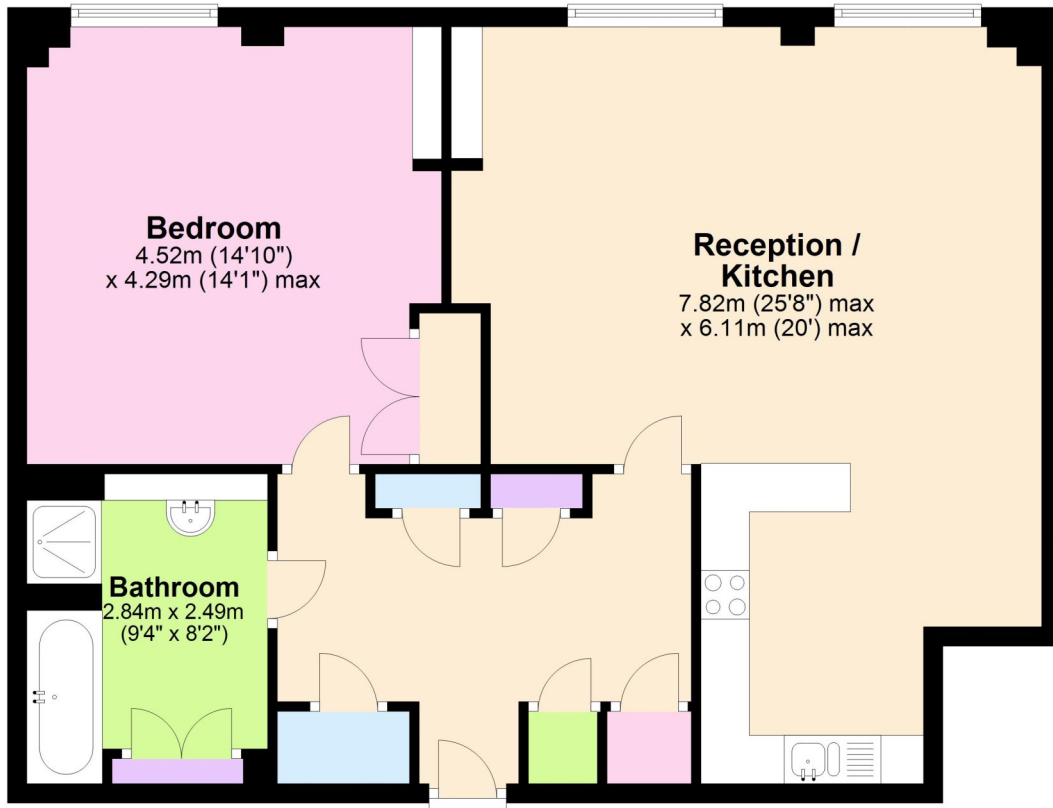
- huge one bedroom apartment
- ground floor
- circa 861 square foot
- superb condition
- extremely bright
- gated development
- secure parking
- moments from Charlton Village
- close to rail





Ground Floor

Approx. 80.1 sq. metres (861.9 sq. feet)



Total area: approx. 80.1 sq. metres (861.9 sq. feet)

This floorplan is for illustration purposes only and is not to scale. The position and size of doors, windows, appliances and other features are approximate.

