



Chepstow Road, W2

£475 per week (£2,058.33 PCM) *Unfurnished*



AN IMMACULATE AND VERY BRIGHT ONE BEDROOM FLAT ON THE FIRST FLOOR OF THIS PERIOD BUILDING.



Notting Hill Lettings

0207 727 3227 | [nottinghill@winkworth.co.uk](mailto:nottinghill@winkworth.co.uk)

**Winkworth**

for every step...

\*Tenant fees may apply: Details of tenant fees are available on the Winkworth website and the link can be found with the displayed rent for the property. Tenants should ensure they are fully conversant with any fees before making an offer to rent and your local Winkworth office can provide written details upon request.





## DESCRIPTION

An immaculate and very bright one bedroom flat on the first floor of this period building. Property comprises: living room with floor to ceiling windows leading out to an ornamental balcony, open plan fitted kitchen, double bedroom to the back of the building and modern bathroom. Single professionals only please.

### Utilities:

Electricity – Mains

Water – Mains

Sewerage – Mains

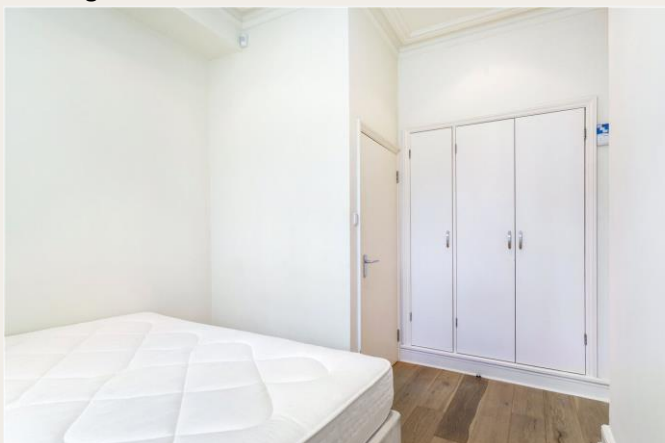
Heating – Gas

Broadband <https://checker.ofcom.org.uk/en-gb/broadband-coverage>

Mobile Coverage <https://checker.ofcom.org.uk/en-gb/mobile-coverage>

### LOCATION:

Chepstow Road is an attractive, tree lined, residential street running north from Westbourne Grove, a short walk to all amenities of Westbourne Grove and Ledbury Road and within easy walking distance of the transport facilities at Notting Hill Gate.



For more information, scan the QR code or visit the link below

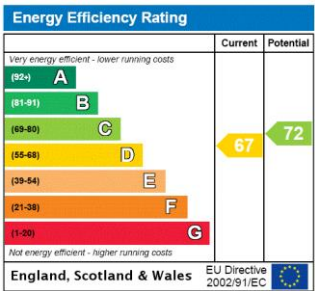


<https://www.winkworth.co.uk/rent/property/NHL200040>

Where no figures are shown, we have been unable to ascertain the information. All figures that are shown were correct at the time of printing.

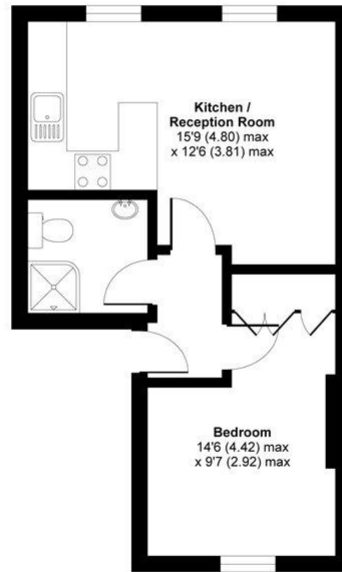
MATERIAL INFO

**Deposit:** £2,375  
**Holding Deposit:** £475  
**Council Tax Band:** B (Westminster)



## Chepstow Road, London, W2

APPROX. GROSS INTERNAL FLOOR AREA 358 SQ FT 33.3 SQ METRES



FIRST FLOOR

Whilst every attempt has been made to ensure the accuracy of the floor plan contained here, measurements of doors, windows and rooms are approximate and no responsibility is taken for any error, omission or misstatement. These plans are for representation purposes only as defined by RICS Code of Measuring Practice and should be used as such by any prospective purchaser. Specifically no guarantee is given on the total square footage of the property if quoted on this plan. Any figure given is for initial guidance only and should not be relied on as a basis of valuation.

Copyright nichecom.co.uk 2012 Produced for The Estate Company REF : 255532

**Notting Hill Lettings**

0207 727 3227 | [nottinghill@winkworth.co.uk](mailto:nottinghill@winkworth.co.uk)

**Winkworth**

for every step...

Winkworth wishes to inform prospective buyers and tenants that these particulars are a guide and act as information only. All our details are given in good faith and believed to be correct at the time of printing but they don't form part of an offer or contract. No Winkworth employee has authority to make or give any representation or warranty in relation to this property. All fixtures and fittings, whether fitted or not are deemed removable by the vendor unless stated otherwise and room sizes are measured between internal wall surfaces, including furnishings.