



LADBROKE GROVE, W10
£1,750 PER MONTH FURNISHED, PART FURNISHED, UNFURNISHED

Winkworth



LADBROKE GROVE, W10

Bright & Spacious One-Bedroom Apartment – Ladbroke Grove, W10

Available Now | Furnished or Unfurnished | Wi-Fi Included

A charming and well-presented one-bedroom apartment located on the second floor of a beautiful period terrace on Ladbroke Grove. Boasting high ceilings and large sash windows, this bright flat offers generous living space and a blend of classic features and modern comforts.

The accommodation comprises:

A spacious reception room with wood flooring

Separate fitted kitchen with ample storage

Double bedroom with garden views and fitted carpet

Modern bathroom

Excellent storage throughout

Surrounded by local amenities, shops, eateries, and excellent transport links

Ideal for a single professional or couple looking to live in one of West London's most vibrant and well-connected neighbourhoods.

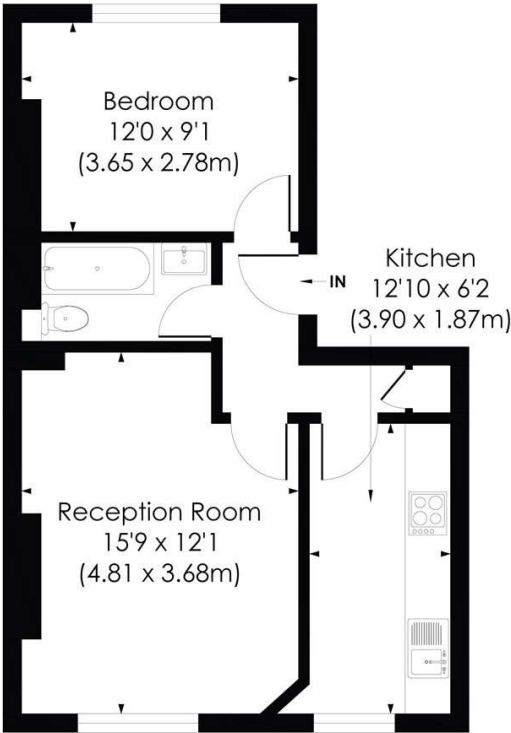
Contact us today to arrange a viewing.





LADBROKE GROVE, W10

Approx. Gross Internal Floor Area
465 Sq. ft/43.22 Sq. m

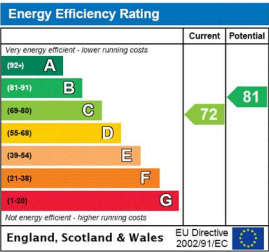


SECOND FLOOR

pixangle
PROPERTY MARKETING

This floor plan has been prepared for the purpose of illustration only in accordance with the latest RICS code of measuring practice and is not to scale. All measurements and areas are approximate and whilst every effort has been made to ensure the accuracy of the plan contained here, no responsibility is taken for any error, omission or misstatement.

© Pixangle Property Marketing Ltd. info@pixangle.com Tel: 0208 870 2118



North Kensington | 020 7792 5000 | northkensington@winkworth.co.uk

winkworth.co.uk

Winkworth wishes to inform prospective buyers and tenants that these particulars are a guide and act as information only. All our details are given in good faith and believed to be correct at the time of printing but they don't form part of an offer or contract. No Winkworth employee has authority to make or give any representation or warranty in relation to this property. All fixtures and fittings, whether fitted or not are deemed removable by the vendor unless stated otherwise and room sizes are measured between internal wall surfaces, including furnishings.

