



Britten Close, NW11

£215,000 Leasehold



## A COMPACT 1 BEDROOM APARTMENT IN THIS VERY DESIRABLE PURPOSE BUILT BLOCK



**Golders Green**

020 8458 8313 | [goldersgreen@winkworth.co.uk](mailto:goldersgreen@winkworth.co.uk)

## Description

An exceptionally well priced, contemporary 1 bedroom apartment in this most desirable block adjacent to the Hampstead Heath Extension. The apartment is located on the raised ground floor and requires updating. Offered chain free. Viewing is strongly recommended.

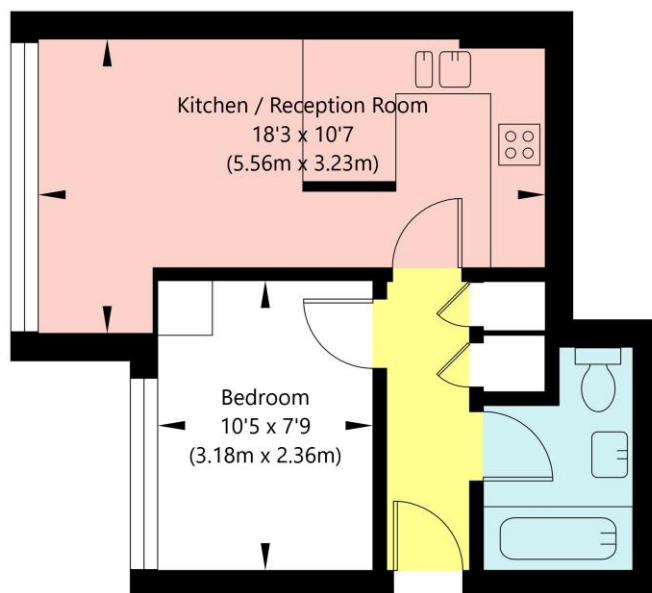
Leasehold: 111 years from 23<sup>rd</sup> December 1980 – 66 years remaining

Service Charge - £2321.14 p/a

Ground Rent - £140.40 p/a

### Britten Close, London NW11 7HW

Raised Ground Floor  
GROSS INTERNAL FLOOR AREA  
APPROX. 31.36 SQ M / 338 SQ FT



APPROXIMATE GROSS INTERNAL FLOOR AREA 31.36 SQ M / 338 SQ FT  
THIS FLOOR PLAN IS FOR ILLUSTRATIVE PURPOSES ONLY AND  
SHOULD BE USED FOR THIS PURPOSE BY PROSPECTIVE APPLICANTS AS ITS NOT TO SCALE.

(c) AMBERSHORE PIX LIMITED / PHOTO - VIDEO - FLOOR PLANS / 0800 999 1577 / WWW.AMBERSHOREPIX.CO.UK

**Golders Green**

020 8458 8313 | [goldersgreen@winkworth.co.uk](mailto:goldersgreen@winkworth.co.uk)