



FLAT 93 JAGO COURT

NEWTOWN ROAD NEWBURY RG14 7EZ

AN ATTRACTIVE AND SPACIOUS TWO BEDROOM TOP FLOOR APARTMENT LOCATED IN THE JAGO COURT DEVELOPMENT.

NO ONWARD CHAIN

The property has been excellently maintained by its current owner and is in fantastic condition throughout. The accommodation comprises of communal entrance with security intercom system, spacious entrance hallway with utility cupboard and plumbing for washing machine.

The kitchen is fully fitted with integrated dishwasher, oven, halogen hob, extractor and fridge/freezer. The kitchen is open plan to the lounge with space for both living and dining.

There are two double rooms with en-suite to the master and built in storage. There is also a separate family bathroom.

EPC C
Council Tax C



Winkworth

AT A GLANCE

- 771 Square feet/ 71.6 Square metres
- Two double bedrooms
- Bathroom
- Kitchen
- Sitting/dining room
- Underfloor heating
- One parking space
- Top floor

UTILITIES

Electric heating
Mains water and drainage
Mobile Signal and Broadband: Full coverage

SITUATION

Situated to the south of Newbury within walking distance of Newbury retail Park, Tesco's superstore, medical centre with dispensing chemist, David Lloyd recreational centre and Newbury Rugby club.

LEASEHOLD DETAILS

Approx 106 years remaining
Ground rent approx £200 pa
Service charge approx £1160 pa
Lease available on request.

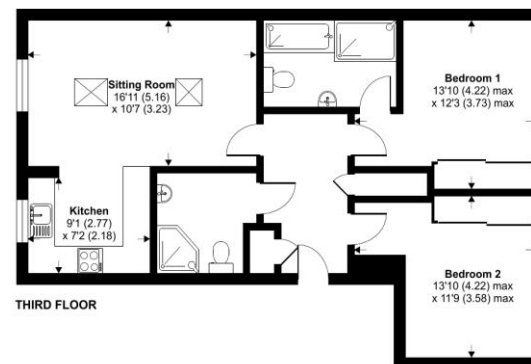
DIRECTIONS

What3words///bought.lamps.moral

Jago Court, Newbury, RG14

Approximate Area = 771 sq ft / 71.6 sq m

For identification only - Not to scale



Floor plan produced in accordance with RICS Property Measurement Standards incorporating International Property Measurement Standards (IPMS2 Residential). ©nickwcom 2024. Produced for Winkworth. REF: 1089709

Winkworth



Newbury Office

43 Northbrook Street, Newbury, Berkshire RG14 1DT

01635 552552 | newbury@winkworth.co.uk

winkworth.co.uk/newbury

Winkworth

See things differently.