



WERTER ROAD, SW15
£1,900 PER MONTH FURNISHED

A charming one bedroom flat with a terrace in the heart of Putney

Putney | 020 8877 1000 | putney@winkworth.co.uk

Winkworth

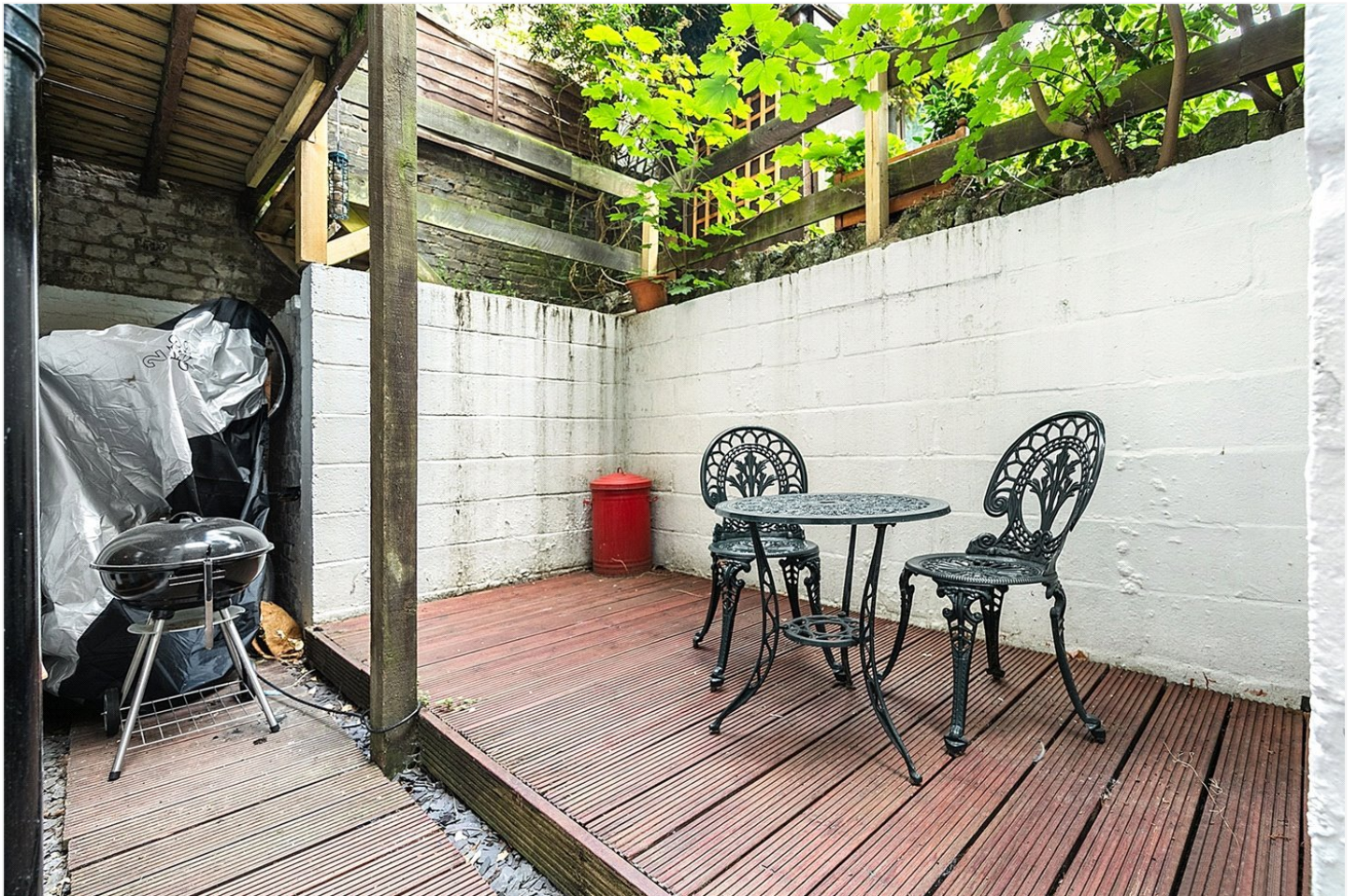
for every step...

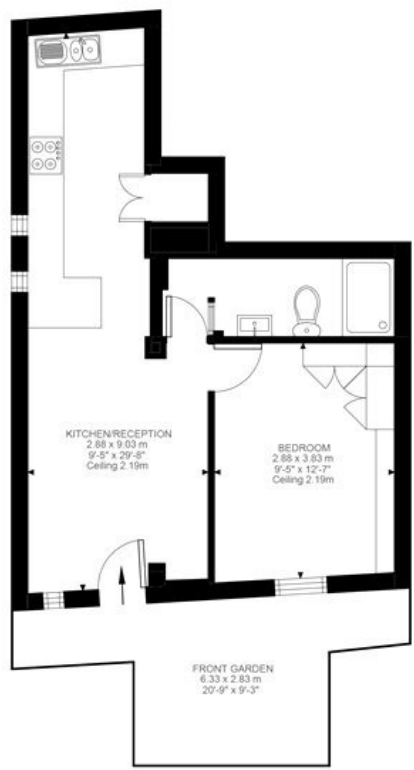
winkworth.co.uk



DESCRIPTION:

Situated at the rear of an impressive period house this flat benefits from wood flooring and modern finishes throughout. The smart, open-plan kitchen/reception room is entered via a private decked terrace and includes integrated appliances, breakfast bar and plenty of storage. Off the living area is a generous double bedroom with extensive fitted wardrobes and drawers. Adjacent is the contemporary bathroom with large walk-in shower. The property is situated in Werter Road which is within a five-minute walk of both Putney mainline and East Putney underground stations. Also close at hand are the river Thames clipper service, Wandsworth Park and the shops, bars and restaurants of Putney High Street.





Lower Ground Floor
417 ft²

Werter Road, SW15
Approximate Gross Internal Area
38.70 SQ.M / 417 SQ.FT

Illustration for identification purposes only. Not to scale.
Floor Plan Drawn According To RICS Guidelines.

This floorplan is for illustration purposes only and is not to scale. The position and size of doors, windows, appliances and other features are approximate.

Deposit: 5 weeks' rent

Holding Deposit: 1 week's rent

Council Tax Band: Wandsworth

Where no figures are shown, we have been unable to ascertain the information. All figures that are shown were correct at the time of printing.

Energy Efficiency Rating		
	Current	Potential
Very energy efficient - lower running costs		
(92+) A		
(81-91) B		
(69-80) C		76
(55-68) D	59	
(39-54) E		
(21-38) F		
(1-20) G		
Not energy efficient - higher running costs		
England, Scotland & Wales EU Directive 2002/91/EC		

Putney | 020 8877 1000 | putney@winkworth.co.uk