



FEATHERSTONE GARDENS, HERTFORDSHIRE, WD6

**£685,000 FREEHOLD**

**AN IMMACULATELY PRESENTED AND EXTENDED  
CHAIN FREE THREE BEDROOM FAMILY HOUSE IN  
SOUTH BOREHAMWOOD**

**Borehamwood** | 020 8953 8899 | [borehamwood@winkworth.co.uk](mailto:borehamwood@winkworth.co.uk)



Winkworth

### DESCRIPTION:

Having been subject to an extensive schedule of refurbishment and improvements, including a six metre single storey rear extension, this three bedroom semi-detached family house has been meticulously maintained and is immaculately presented throughout.

The deceptively generous and well-proportioned accommodation totals in excess of 1200 square feet and is complimented by an Easterly facing rear garden and off street parking to the front for two cars.

Located in a sought after turning on the highly sought after South side of Borehamwood, the property is close to several highly rated Ofsted schools including Yavneh, Monksmead and Kenilworth.

### AT A GLANCE

- Three Bedrooms
- Chain Free
- South Borehamwood
- 1227 Square Feet
- Guest Cloakroom
- Gas Central Heating
- Double Glazed
- Off Street Parking



Winkworth



Winkworth



Approximate Gross Internal Area = 114.0 sq m / 1227 sq ft

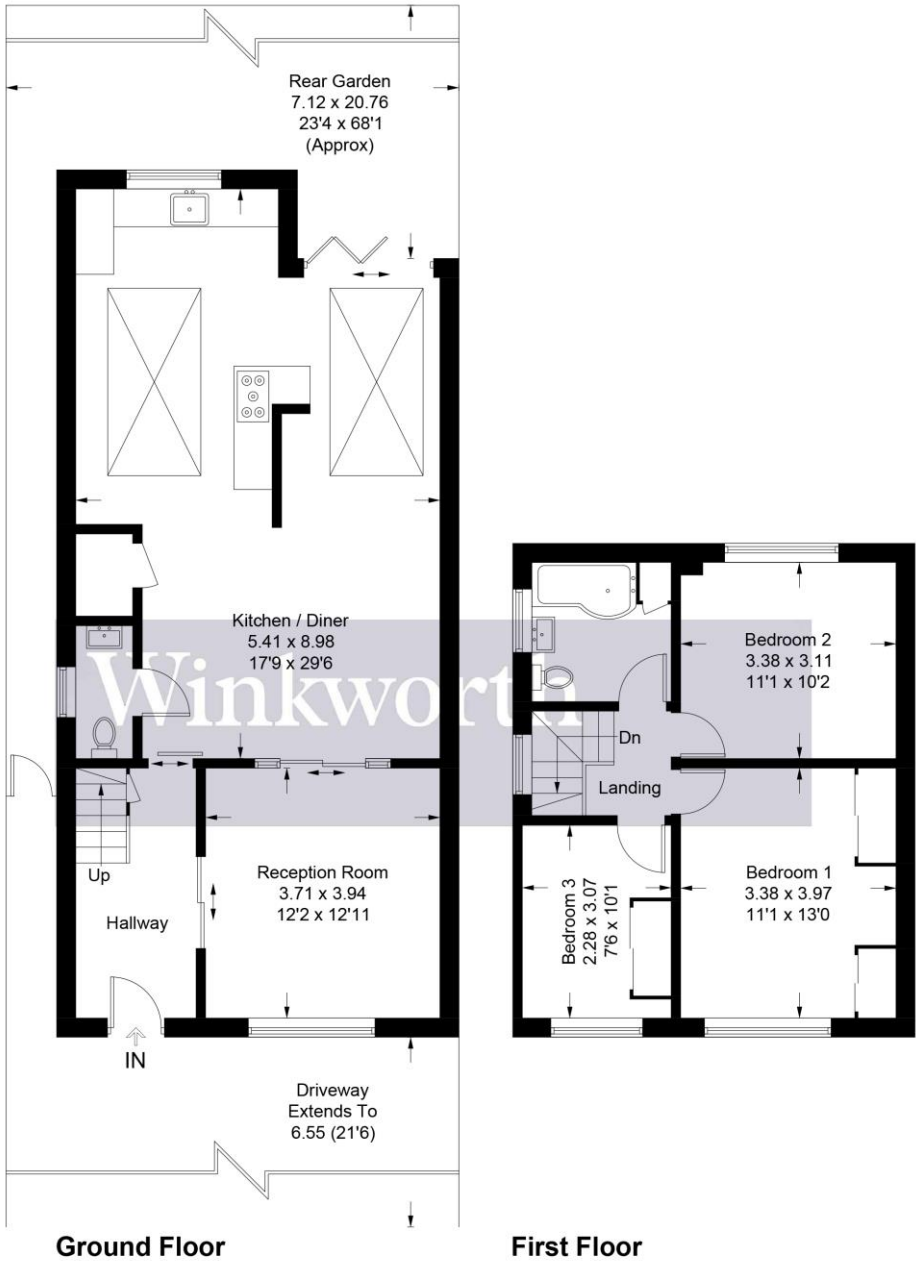


Illustration for identification purposes only, measurements are approximate, not to scale. Winkworth © 2025 (ID1189712)

This floorplan is for illustration purposes only and is not to scale. The position and size of doors, windows, appliances and other features are approximate.

Score	Energy rating	Current	Potential
92+	A		
81-91	B		
69-80	C		
55-68	D		
39-54	E		
21-38	F		
1-20	G		

**Tenure:** Freehold  
**Term:** 0 year and 0 months  
**Service Charge:** £0 per annum  
**Ground Rent:** £ 0 Annually (subject to increase)  
**Council Tax Band:** D

Where no figures are shown, we have been unable to ascertain the information. All figures that are shown were correct at the time of printing.