



WATCHFIELD COURT, LONDON, W4
£425,000 SHARE OF FREEHOLD

ONE BEDROOM 1930'S APARTMENT IN CENTRAL CHISWICK

Chiswick | 020 8994 7096 | chiswick@winkworth.co.uk

Winkworth

for every step...

winkworth.co.uk



DESCRIPTION:

Winkworth are delighted to offer one of the largest one bedroom apartments on Watchfield Court.

A fine example of 1930's Art Deco architecture, this apartment has been lovingly maintained and used as a very comfortable 'Pied A Terre' by our current Vendors for a number of years.

Lift serviced, the apartment is nestled at the front of the development on the first floor and boasts a large 'L' shaped Lounge with Dining area, a good size balcony/terrace, a recently upgraded kitchen with integrated appliances and a very smart bathroom. The bedroom is a great size and has built-in wardrobes and the apartment also benefits from an abundance of natural light throughout.

With on site Portorage and blocks only accessible via code, the property offers great security as well as beautifully landscaped communal gardens. Parking is available within the development.

Just moments from Turnham Green and the shops and eateries of Chiswick High Road. The smart commuter will benefit from being less than half a mile of Gunnersbury Tube and Overground (Zones 3) and Chiswick Park Tube (Zone 3). Just over half a mile from Turnham Green Tube (Zone 2 and 3).

Further benefits include communal landscaped gardens, a porter and communal heating and hot water. A number of off-street parking spaces are available for residents.

Offered with no onward chain.

169 Year Lease with a Share of Freehold.

Current Service Charges: £4936 for 2023/24 includes all hot water and heating.

ACCOMMODATION

Share of Freehold

1 Bedroom,

1 Reception Room,

1 Bathroom,

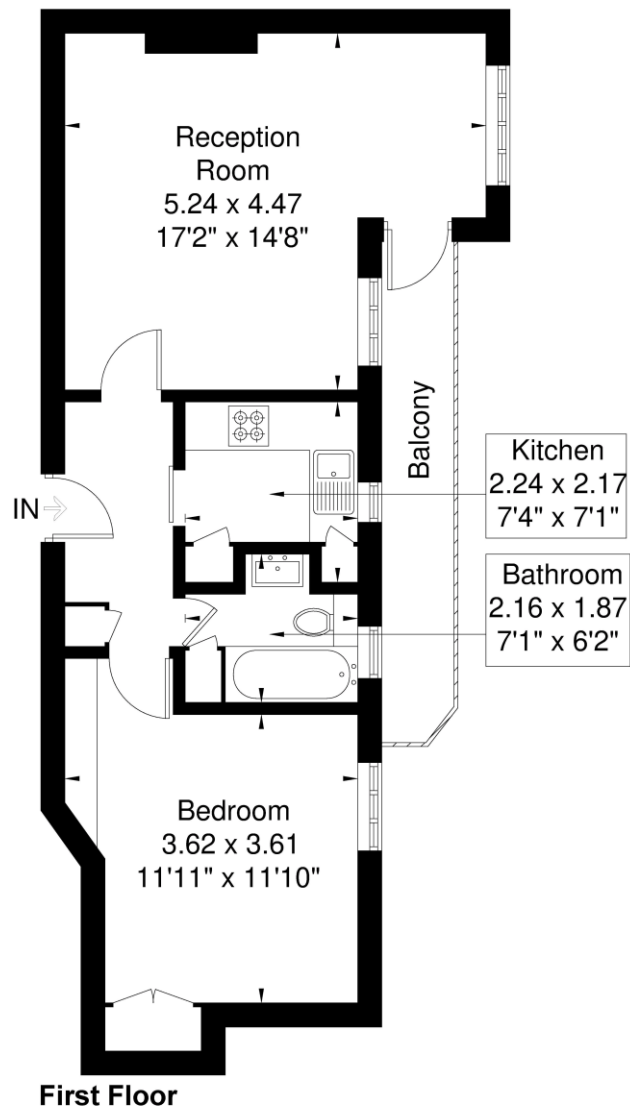
First Floor, with Lift,

Off Street Parking



Watchfield Court

Approximate Gross Internal Area = 47.5 sq m / 511 sq ft

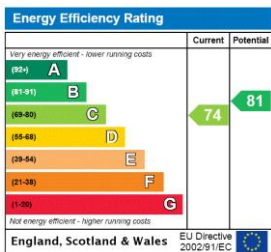


First Floor

Winkworth

Although every attempt has been made to ensure accuracy, all measurements are approximate.
The floorplan is for illustrative purposes only and not to scale.
© www.perspective.co.uk

This floorplan is for illustration purposes only and is not to scale. The position and size of doors, windows, appliances and other features are approximate.



Chiswick | 020 8994 7096 | chiswick@winkworth.co.uk



for every step...

winkworth.co.uk

Winkworth wishes to inform prospective buyers and tenants that these particulars are a guide and act as information only. All our details are given in good faith and believed to be correct at the time of printing but they don't form part of an offer or contract. No Winkworth employee has authority to make or give any representation or warranty in relation to this property. All fixtures and fittings, whether fitted or not are deemed removable by the vendor unless stated otherwise and room sizes are measured between internal wall surfaces, including furnishings.