



CAMDEN CRESCENT, BATH, BA1  
**£450,000 SHARE OF FREEHOLD**

**Winkworth**





## CAMDEN CRESCENT, BATH, BA1

**Prime Location | Grade I Listed | 2 Bedrooms | Large Study / work space | Private Entrance and Courtyard | Impressive Pen Vault with views over Camden Meadow | Almost 1.400sqft.**

A superb apartment situated in the prime location of Camden Crescent.

Private Entrance Hall | Impressive Living Room | Kitchen /Breakfast Room | 2 Bedrooms | Study | Bathroom.

0.4 miles to Milsom Street, Bath city centre.

The apartment is accessed by stone steps leading down to a courtyard and a private front door.

There is a light and spacious entrance hall leading into an impressive drawing room, with sash windows, working shutters and feature fireplace.

The kitchen has fitted cupboards and space for a seating area and a door leading into the rear courtyard.

There are 2 bedrooms and a large study.

Newly refurbished bathroom.

Externally there is a covered outside space, approximately 32x17.5sqft or 10x5m. This area needs some attention but could be an impressive outside space.

With almost 1,400sqft of versatile accommodation, this is a wonderful and spacious home.

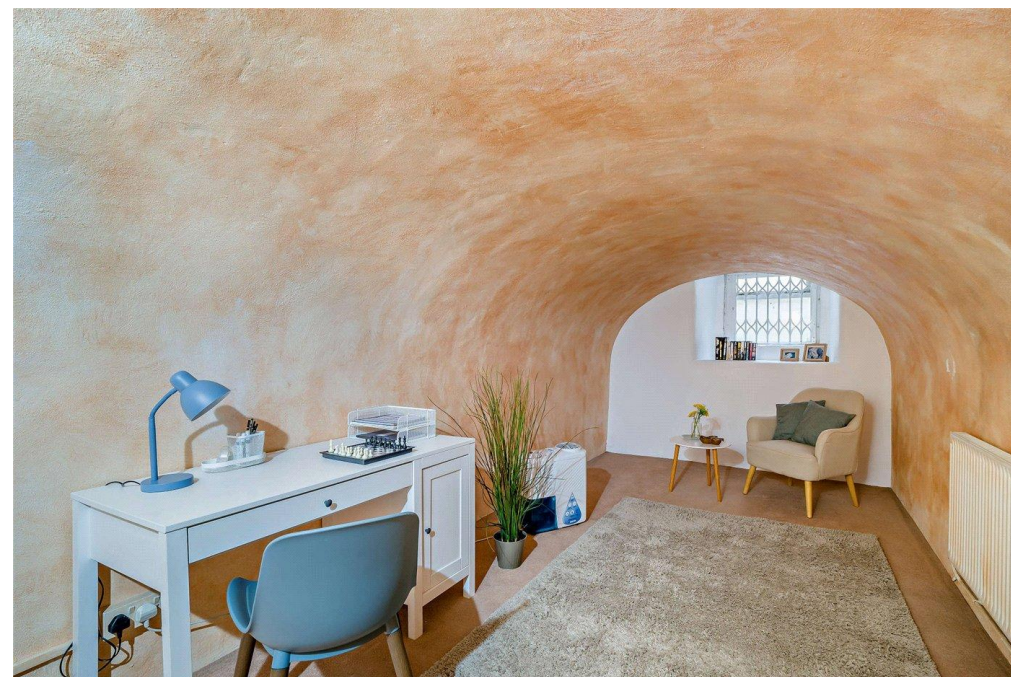
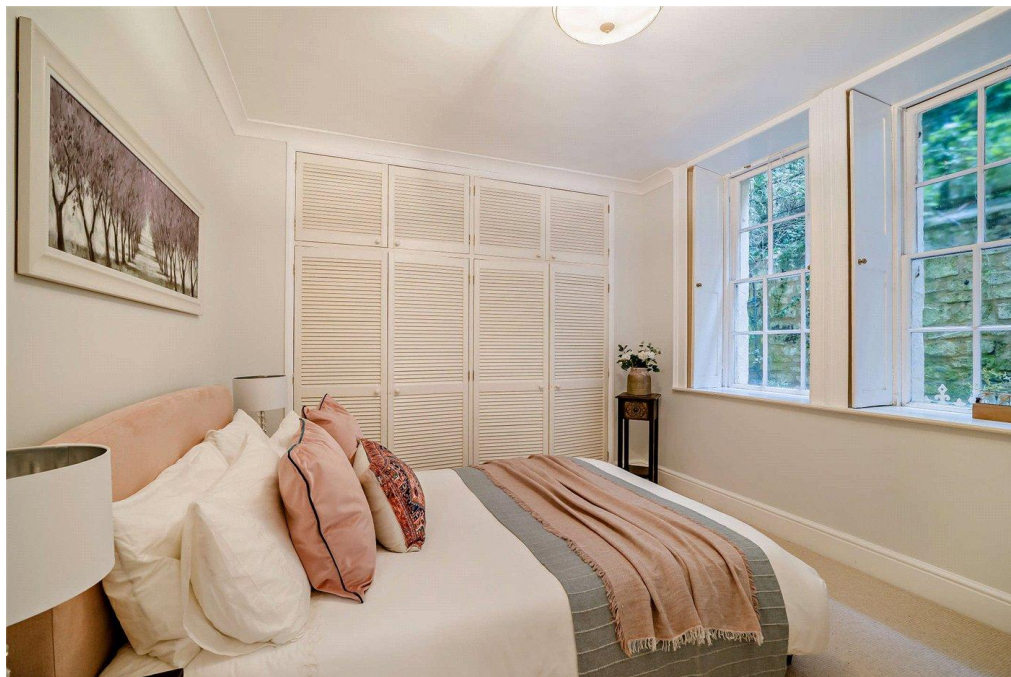
Management charges - £180pcm

Council Tax Band C

Share of Freehold





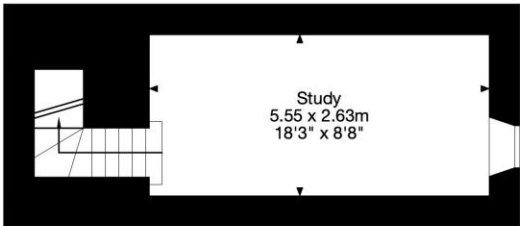




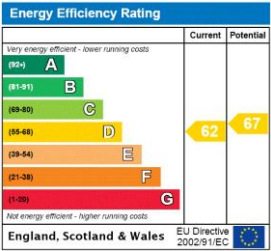
Courtyard Apartment, 10 Camden Crescent, Bath BA1 5HY  
126 sq m / 1,354 sq ft



Ground Floor



Lower Ground Floor



Capture Property Marketing 2025. Drawn to RICS guidelines. Not drawn to scale

Bath | 01225 829 000 | bath@winkworth.co.uk

winkworth.co.uk

Winkworth wishes to inform prospective buyers and tenants that these particulars are a guide and act as information only. All our details are given in good faith and believed to be correct at the time of printing but they don't form part of an offer or contract. No Winkworth employee has authority to make or give any representation or warranty in relation to this property. All fixtures and fittings, whether fitted or not are deemed removable by the vendor unless stated otherwise and room sizes are measured between internal wall surfaces, including furnishings.

