



## Kidmore Road, Reading, Berkshire, RG4 7NA

£1,400 per month *Unfurnished*



Two bedroom first floor maisonette located in A popular location offering excellent access to Caversham village centre and Reading. Accommodation comprises one double and one single bedroom, a modern bathroom, lounge/diner and a fitted kitchen. The property further benefits from an off road parking space. Available 18th March 2026. Unfurnished.

### KEY FEATURES

- Two bedroom first floor maisonette
- Modern kitchen and bathroom
- Off road parking space
- Council tax band C
- Available 18th March
- Unfurnished



Reading

0118 4022 300 | [reading@winkworth.co.uk](mailto:reading@winkworth.co.uk)

**Winkworth**

for every step...









#### MATERIAL INFO

**Deposit:** £1,615.38

**Holding Deposit:** £323.07

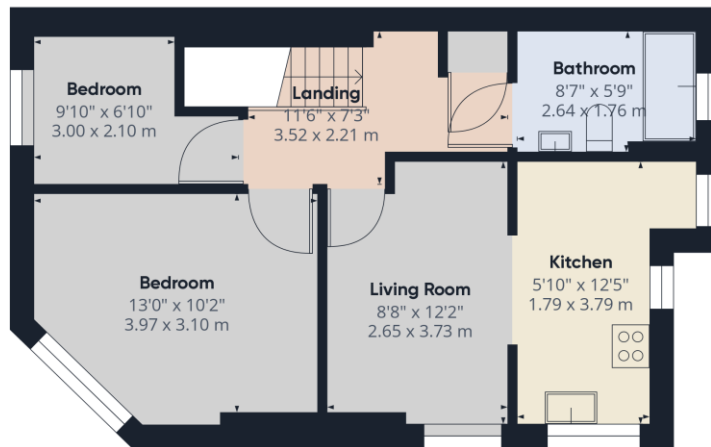
**Council Tax Band:** C



**Hallway**  
5'8" x 3'9"  
1.75 x 1.15 m

**Approximate total area<sup>®</sup>**  
526.11 ft<sup>2</sup>  
48.88 m<sup>2</sup>

Ground Floor

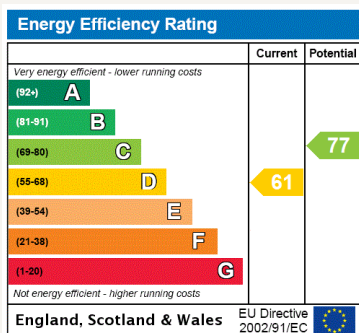


Floor 1

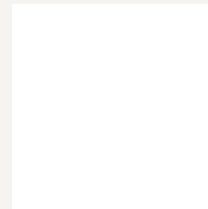
(1) Excluding balconies and terraces

While every attempt has been made to ensure accuracy, all measurements are approximate, not to scale. This floor plan is for illustrative purposes only.

GIRAFFE360



For more information, scan the QR code or visit the link below



<https://www.winkworth.co.uk/rent/property/REA150175>

Where no figures are shown, we have been unable to ascertain the information. All figures that are shown were correct at the time of printing.

**Reading**

0118 4022 300 | [reading@winkworth.co.uk](mailto:reading@winkworth.co.uk)

**Winkworth**

for every step...

Winkworth wishes to inform prospective buyers and tenants that these particulars are a guide and act as information only. All our details are given in good faith and believed to be correct at the time of printing but they don't form part of an offer or contract. No Winkworth employee has authority to make or give any representation or warranty in relation to this property. All fixtures and fittings, whether fitted or not are deemed removable by the vendor unless stated otherwise and room sizes are measured between internal wall surfaces, including furnishings.