



LANSDOWNE CRESCENT, LONDON, W11

£925 PER WEEK (£4,008.33 PCM) Furnished

A SPACIOUS TWO BEDROOM GARDEN FLAT ON THE LOWER GROUND FLOOR OF THIS ATTRACTIVE GEORGIAN BUILDING, BOASTING A BEAUTIFUL PRIVATE TERRACE WHICH HAS DIRECT ACCESS TO THE FANTASTIC COMMUNAL GARDENS (CHARGES MAY APPLY) BEHIND.

Long Let, Short Let, 2 Bedrooms, 1 Reception Room, 1 Bathroom,
Flat/Apartment, Basement, Garden, Communal Gardens, Period, Furnished, 807
Approx Sq Ft Energy Efficiency Rating: 63

Winkworth



DESCRIPTION:

A spacious two bedroom garden flat on the lower ground floor of this attractive Georgian building, boasting a beautiful private terrace which has direct access to the fantastic communal gardens (charges may apply) behind. The flat comprises a large living room with fireplace, separate modern and fully fitted kitchen, utility room, two bedrooms and wooden floors throughout. There is an exceptionally bright, newly refurbished conservatory area overlooking the garden. Available furnished, or part-furnished for long and short let by separate negotiation. Dogs will be considered, on a case by case basis.

LOCATION:

Lansdowne Crescent is a prime residential street and sits in the very heart of Notting Hill, ideally situated for Westbourne Grove, Portobello Market and Holland Park with their wonderful array of vibrant boutiques, cafes and restaurants. Excellent transport links are on the doorstep with direct links to the City via the Notting Hill underground station (District & Circle/Central lines), as well as the calming green open spaces of Kensington Gardens and Hyde Park.

LOCAL AUTHORITY:

Royal Borough of Kensington and Chelsea




LANSDOWNE CRESCENT, W11

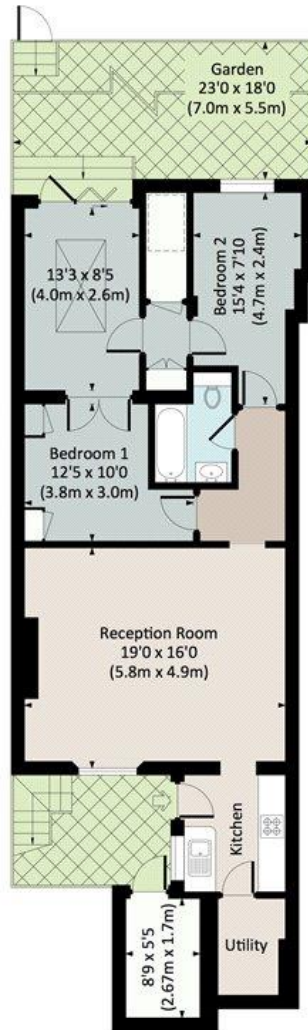
Approx. gross internal area

946 Sq Ft. / 87.9 Sq M.

959 Sq Ft. / 89.1 Sq M. Inc. Reduced Headroom



 = Reduced headroom below 1.5m / 5'0"

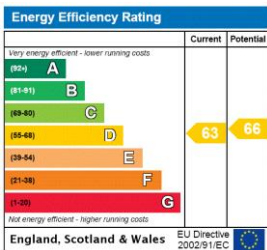


LOWER GROUND FLOOR



All measurements have been made in accordance with RICS code of Measuring Practice which are approximate only and only for illustrative purposes. For the avoidance of doubt, Dowling Jones Design shall not be liable for any reliance on these measurements. © 2018 www.dowlingjones.com 020 7610 9933

This floorplan is for illustration purposes only and is not to scale. The position and size of doors, windows, appliances and other features are approximate.



Notting Hill | 0207 727 3227 | nottinghill@winkworth.co.uk



winkworth.co.uk

See things differently

winkworth wishes to inform prospective buyers and tenants that these particulars are a guide and act as information only. All our details are given in good faith and believed to be correct at the time of printing but they don't form part of an offer or contract. No Winkworth employee has authority to make or give any representation or warranty in relation to this property. All fixtures and fittings, whether fitted or not are deemed removable by the vendor unless stated otherwise and room sizes are measured between internal wall surfaces, including furnishings.