



Winkworth

Arundel Drive, WD6

£340,000 *Leasehold*



Well-Presented Chain Free Two Double Bedroom First Floor Apartment.

KEY FEATURES

- Two Double Bedrooms
- Two Bathrooms
- Chain Free
- South Borehamwood
- Allocated Parking Space
- 712 Square Feet
- Double Glazed



Winkworth



Winkworth

Borehamwood

020 8953 8899 | borehamwood@winkworth.co.uk



Situated on the highly desirable South side of Borehamwood is this chain free, modern and well-presented two double bedroom, two-bathroom first floor purpose built flat.

Benefits include well-proportioned accommodation totalling in excess of 700 square feet and an allocated parking space to the rear of the property.

Making an ideal purchase for buy to let investors and first-time buyers alike, viewings come highly recommended.

MATERIAL INFO

Tenure: Leasehold

Term: 84 year and 5 months

Service Charge: £1451.98 per annum

Ground Rent: £ 350 Annually (subject to increase)

Council Tax Band: D

EPC rating: C



Approximate Gross Internal Area
66.2 sq m / 712 sq ft

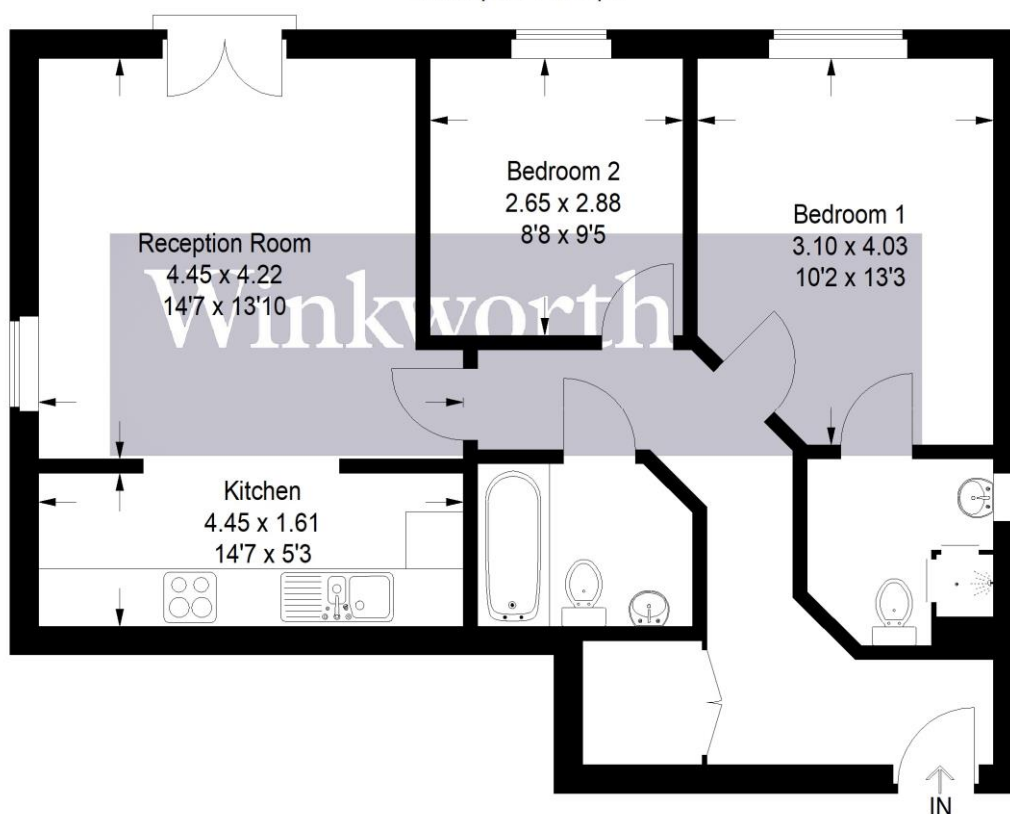
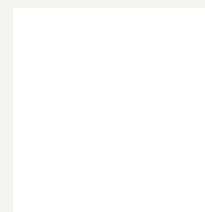
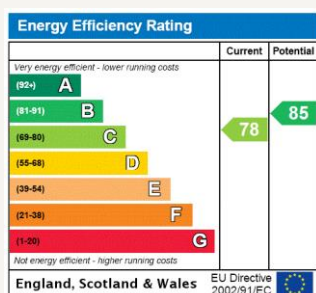


Illustration for identification purposes only, measurements are approximate,
not to scale. Winkworth © 2022 (ID 827496)

For more information, scan the QR code or visit the link below



<https://www.winkworth.co.uk/sale/property/BOR210346>

Where no figures are shown, we have been unable to ascertain the information. All figures that are shown were correct at the time of printing.

Borehamwood

020 8953 8899 | borehamwood@winkworth.co.uk