



Arundel Drive, WD6

£340,000 *Leasehold*



Modern and Well-Presented Chain Free Two Double Bedroom Two Bathroom First Floor Apartment.

KEY FEATURES

- 2 Bedrooms
- South Borehamwood
- 712 Square Feet
- Allocated Parking Space
- Two Bathrooms
- Chain Free



Borehamwood

020 8953 8899 | borehamwood@winkworth.co.uk



Situated on the highly desirable South side of Borehamwood is this chain free, modern and well-presented two double bedroom, two bathroom first-floor purpose built flat.

With well-proportioned accommodation totalling in excess of 700 square feet and an allocated parking space to rear the property would be ideal for buy to let investors and first-time buyers alike.

Viewings highly recommended.

MATERIAL INFO

Tenure: Leasehold

Term: 84 year and 5 months

Service Charge: £1451.98 per annum

Ground Rent: £ 350 Annually (subject to increase)

Council Tax Band: D

EPC rating: C



Approximate Gross Internal Area
66.2 sq m / 712 sq ft

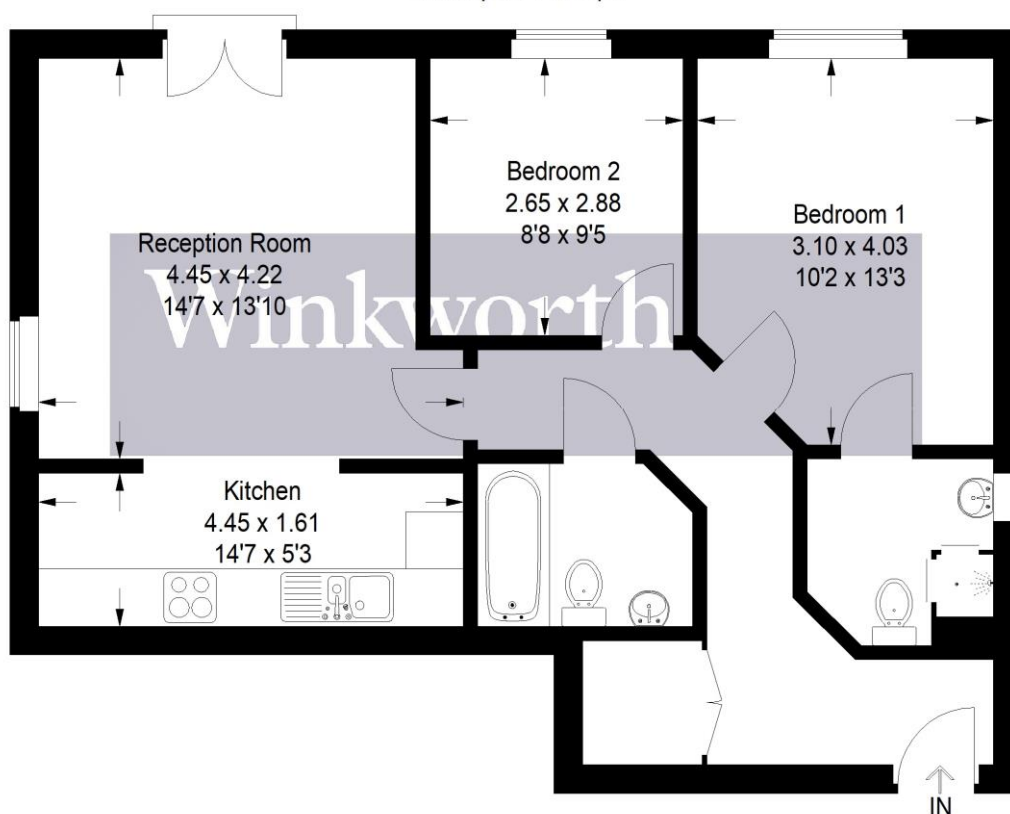
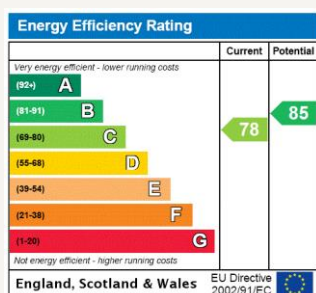


Illustration for identification purposes only, measurements are approximate,
not to scale. Winkworth © 2022 (ID 827496)

For more information, scan the QR code or visit the link below



<https://www.winkworth.co.uk/sale/property/BOR210346>

Where no figures are shown, we have been unable to ascertain the information. All figures that are shown were correct at the time of printing.

Borehamwood

020 8953 8899 | borehamwood@winkworth.co.uk