



STADIUM MEWS, LONDON, N5
£450,000 LEASEHOLD

**A BEAUTIFUL, ONE BEDROOM APARTMENT
POSITIONED ON THE SECOND FLOOR
MOMENTS FROM THE TUBE.**

Highbury | 0207 989 7000 | highbury@winkworth.co.uk



winkworth.co.uk

See things differently



DESCRIPTION:

A beautifully presented, one bedroom apartment positioned on the second floor of the ever-popular Highbury Stadium Square. Standing in excess of 600 sqft, the property offers wonderfully spacious rooms, notably an open plan living room/kitchen area with a large, floor to ceiling, south facing window allowing for an abundance of natural light to pour through. The bedroom features built in wardrobes and has an incredibly peaceful outlook across neighbouring gardens. The property is completed with a modern family bathroom and two large storage cupboards in the hallway. There is access to an on-site Fitness First gym with swimming pool (through separate paid member ship)

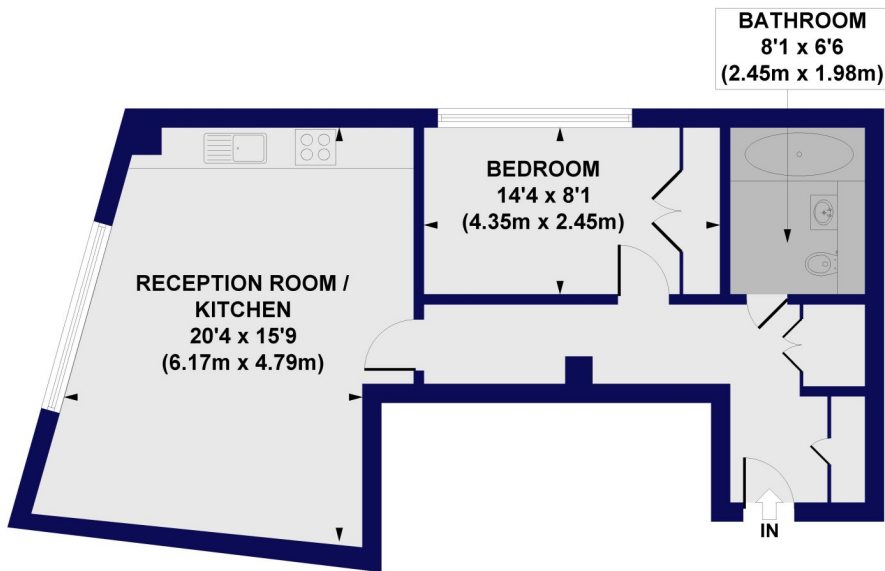
Highbury Stadium Square is located moments from Arsenal station (Piccadilly line) and Finsbury Park station which offers overground and underground services (Piccadilly & Victoria lines). Drayton Park overground is also close by offering easy access to the City. Highbury Barn offers fantastic local shops including Godfrey's butchers, La Fromagerie, Da Mario's Deli, Bourne's fishmongers and Highbury Vintners, all of which are hugely popular with locals as well as drawing those from further afield.

Winkworth



Winkworth

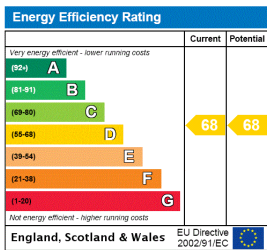
Stadium Mews, N5
Approx. Gross Internal Floor Area 634 sq. ft / 58.9 sq. m



All measurements of walls, doors, windows, fittings and appliances, including their size and location, are shown as standard sizes and do not constitute any warranty or representation by the seller, their agent or CP Creative. Any intending purchaser must satisfy himself by inspection or otherwise as to the correctness of the information contained in these plans. This plan is for illustrative purposes only and should be used as such by any prospective purchasers.

Winkworth

This floorplan is for illustration purposes only and is not to scale. The position and size of doors, windows, appliances and other features are approximate.



Highbury | 0207 989 7000 | highbury@winkworth.co.uk



winkworth.co.uk

See things differently

Winkworth wishes to inform prospective buyers and tenants that these particulars are a guide and act as information only. All our details are given in good faith and believed to be correct at the time of printing but they don't form part of an offer or contract. No Winkworth employee has authority to make or give any representation or warranty in relation to this property. All fixtures and fittings, whether fitted or not are deemed removable by the vendor unless stated otherwise and room sizes are measured between internal wall surfaces, including furnishings.