

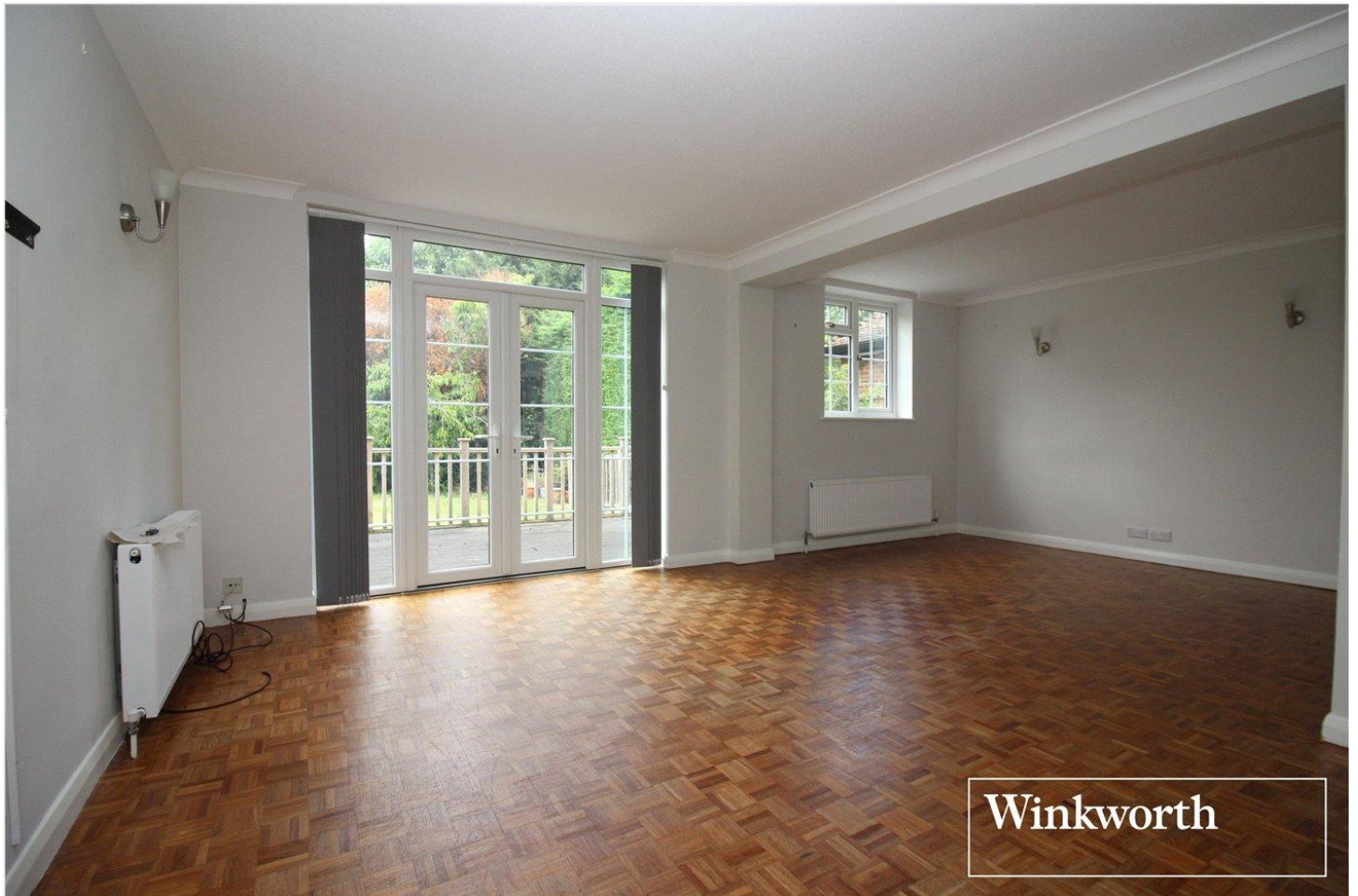


HARTFIELD CLOSE, BOREHAMWOOD, HERTFORDSHIRE, WD6

**£1,100,000 FREEHOLD**

**A CHAIN FREE FOUR BEDROOM, THREE  
RECEPTION, TWO/THREE BATHROOM DETACHED  
HOUSE WITH POTENTIAL TO EXTEND (STPP)**

**Borehamwood | 020 8953 8899 | borehamwood@winkworth.co.uk**



## DESCRIPTION:

Occupying a corner plot in a sought after cul de sac of only nine houses and offered for sale chain free is this four bedroom, two/three bathroom detached family house.

The well proportioned accommodation, totalling circa 1800 square feet is arranged over two floors and consists of master bedroom with ensuite bathroom, three additional bedrooms, family bathroom, dining room, lounge, study, kitchen breakfast room, guest cloakroom and a recently installed downstairs wet room.

The accommodation is complemented by a secluded rear garden and a driveway to the front providing off street parking for several cars.

Positioned in a quiet turning, yet within easy access of Elstree and Borehamwood Thameslink station the property provides both the peace and convenience todays families demand.

## AT A GLANCE

- 4 Bedrooms
- Three Receptions
- Two/Three Bathrooms
- Chain Free
- 1791 Square Feet (166.4 M2)
- Potential To Extend (Stpp)
- Sought After Cul de Sac
- 44' Front Driveway





Winkworth



Winkworth



Winkworth



Winkworth



Winkworth

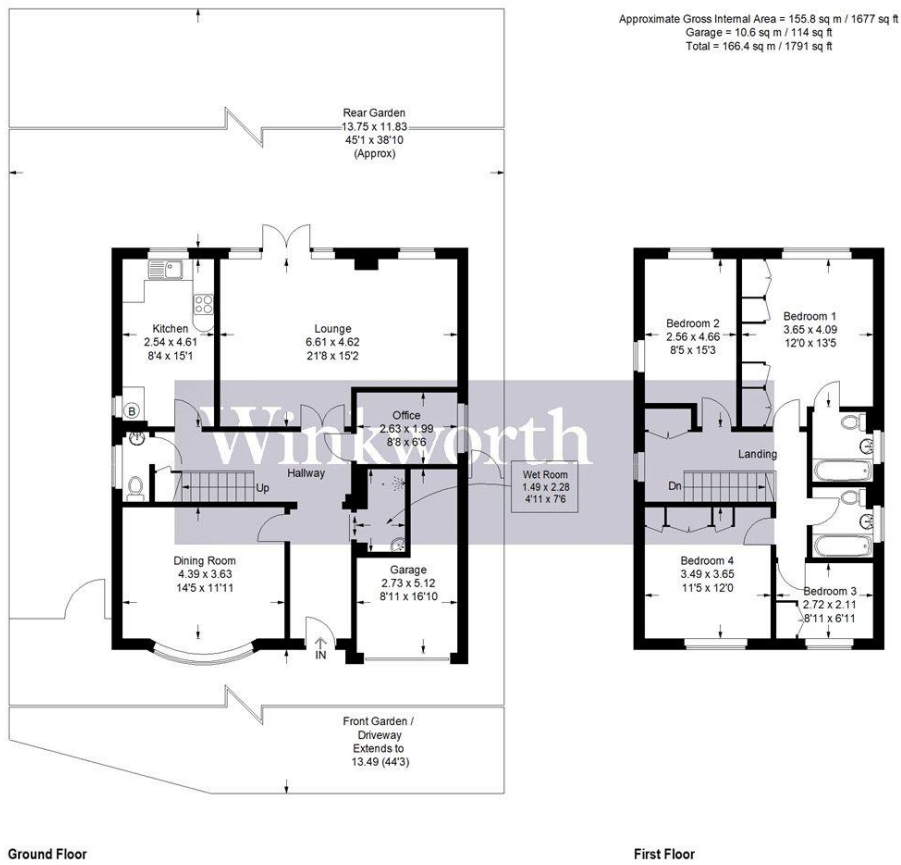


Illustration for identification purposes only, measurements are approximate, not to scale. Winkworth © 2018 (ID 489537)

This floorplan is for illustration purposes only and is not to scale. The position and size of doors, windows, appliances and other features are approximate.

